

The Norwich | 3300 sq. ft. | ELEVATION 1

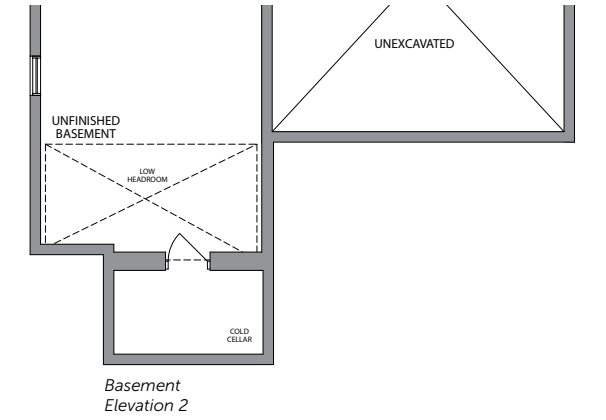
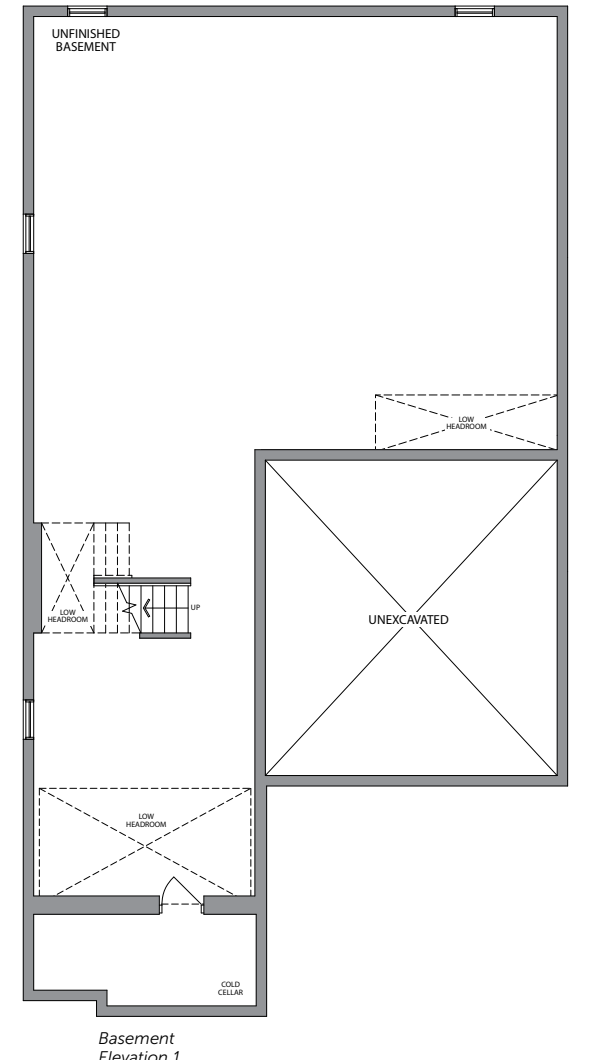
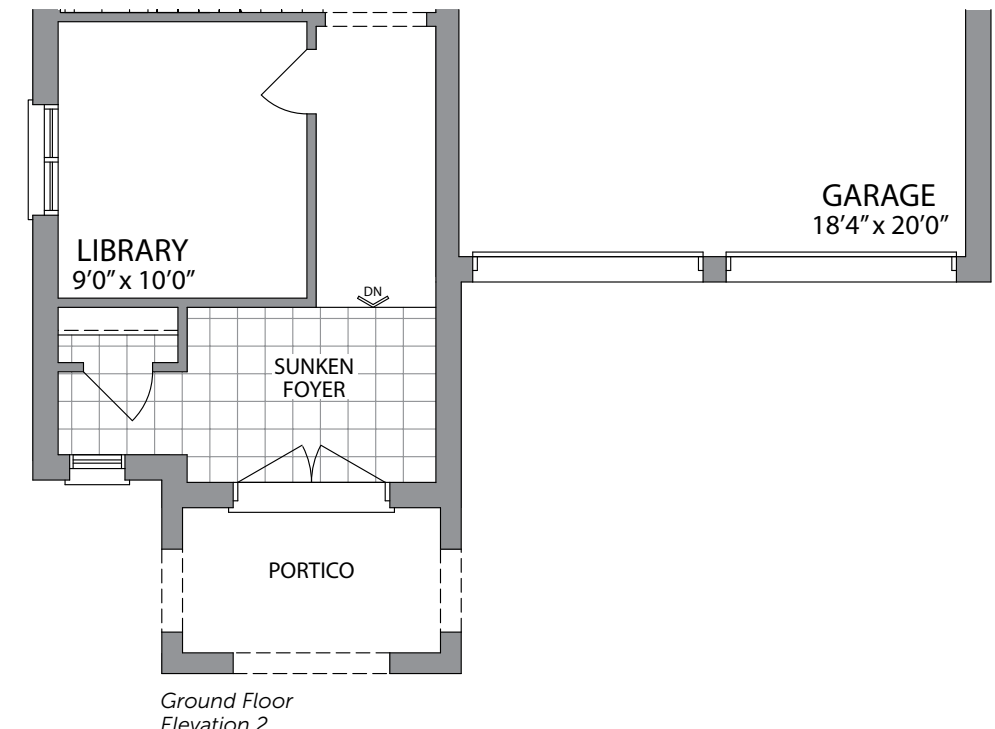
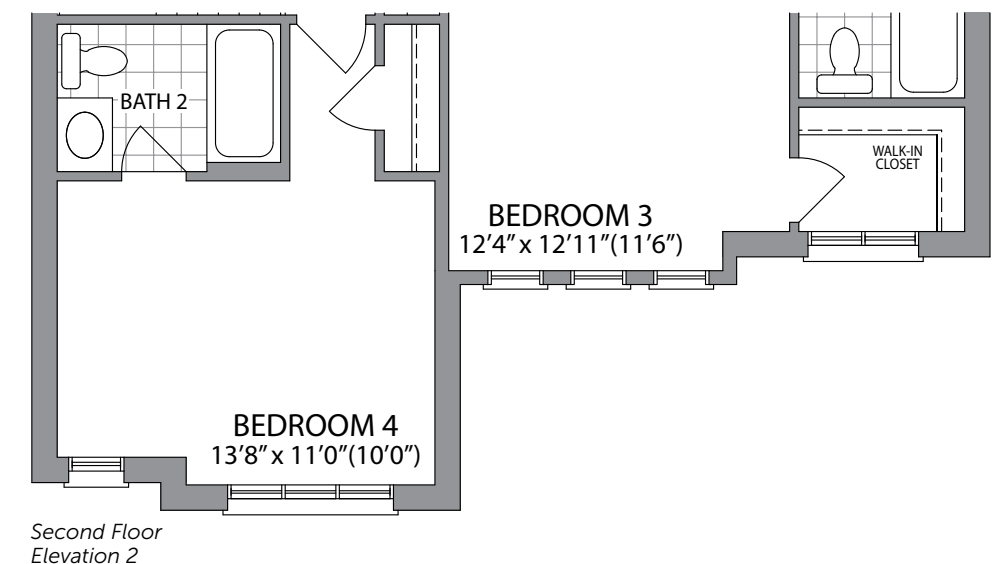
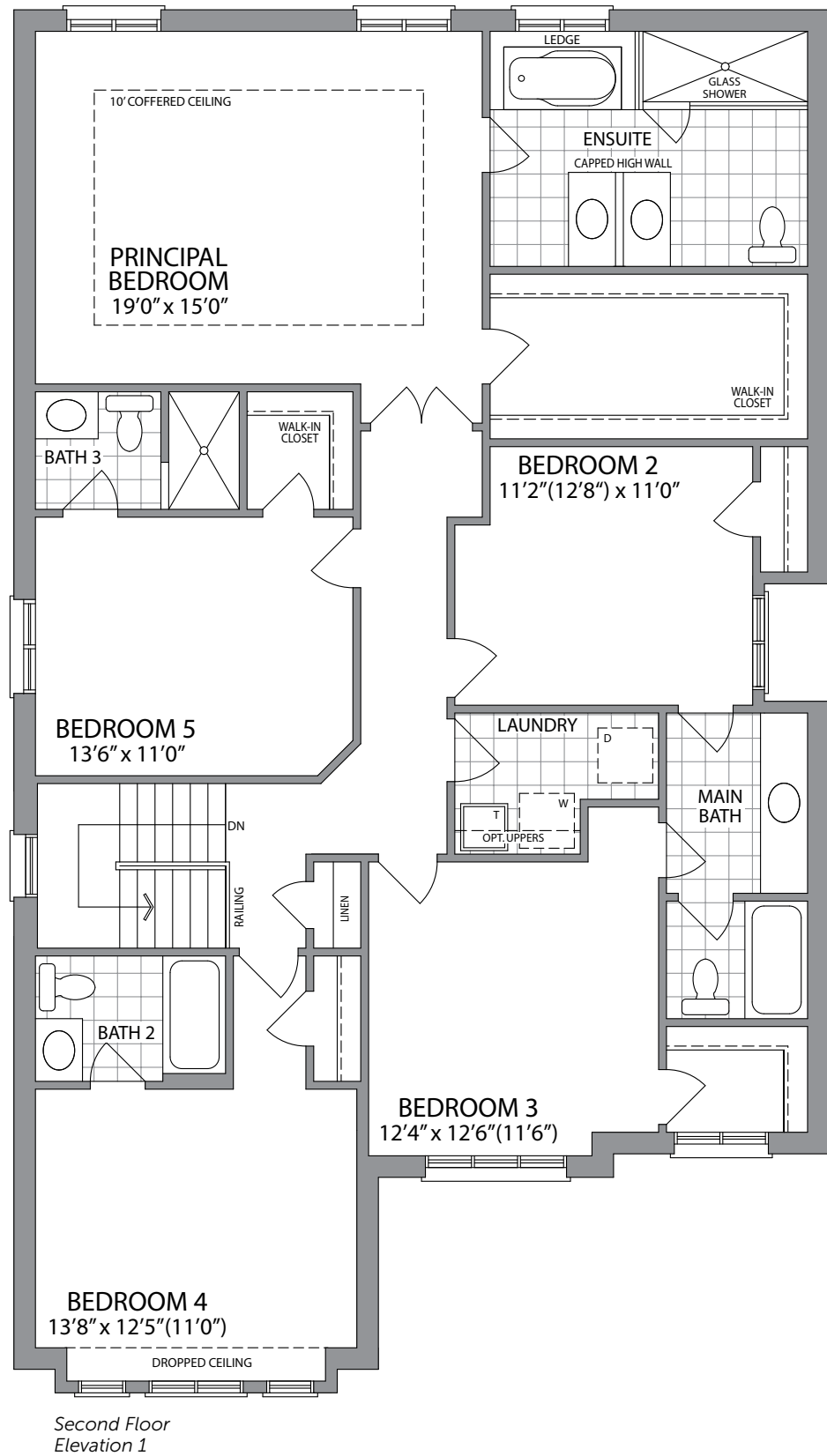
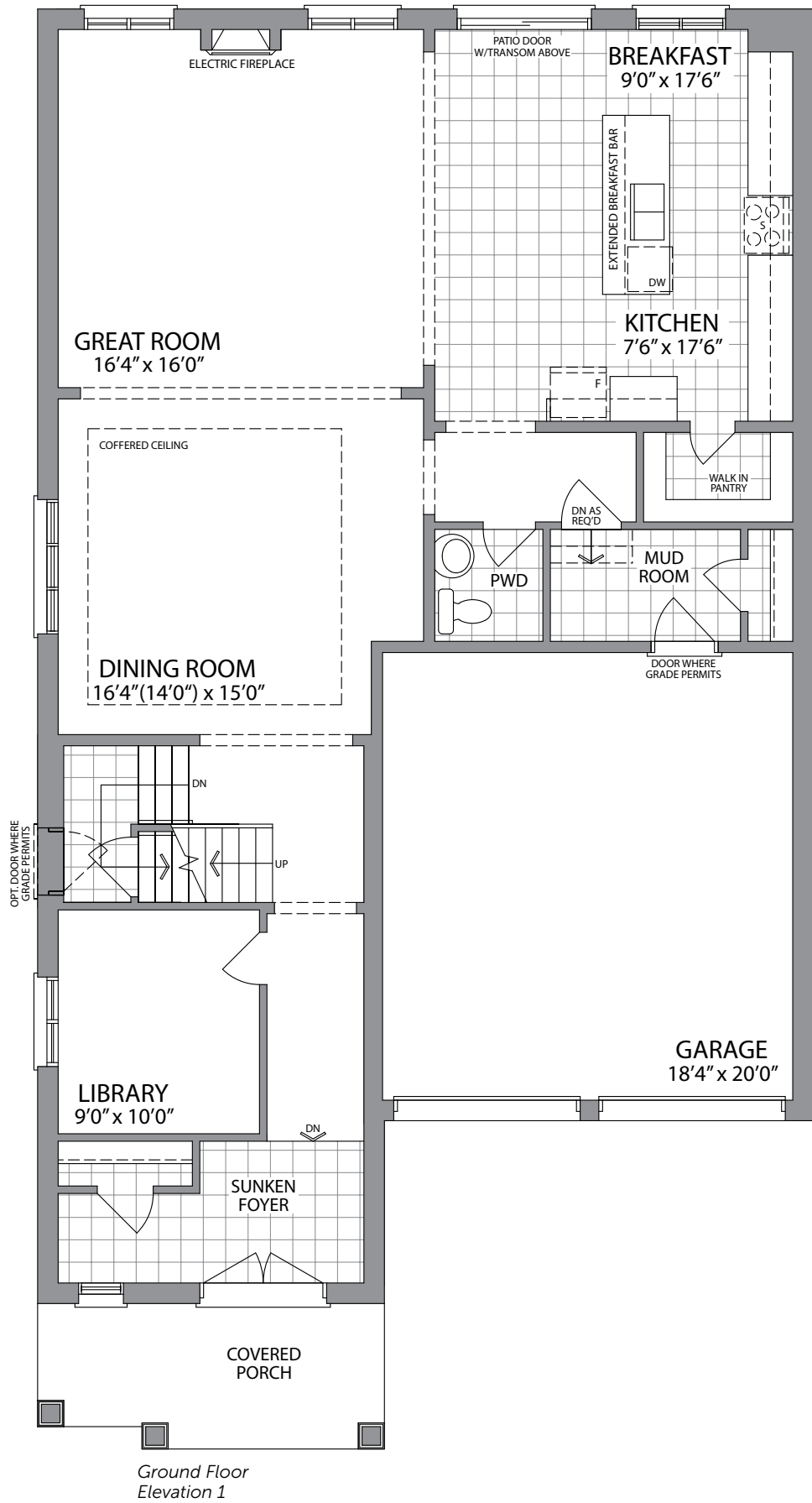


The Norwich | 3300 sq. ft. | ELEVATION 2



**41'** DETACHED HOMES





The Norwich | 3300 sq. ft.

**PARADISE**  
DEVELOPMENTS®

Plans and specifications are subject to change without notice. E. & O. E. Actual usable floor space may vary from the stated floor area. All renderings are artist's concept. (41N)