

WHITBY MEADOWS

newTOWNS

URBAN  
TOWNS





# PARADISE COMES TO WHITBY.

Life is all about choices. Of all the things we choose in life, purchasing a new home is perhaps the single most important decision we'll ever make. That's why you'll appreciate the wide variety of homes that Paradise Developments is offering here at Whitby Meadows New Towns. As we add this collection of beautiful new townhomes to our proud legacy, we aim to create something larger - a thoughtfully planned community that you'll be proud to call home.

WHITBY MEADOWS  
newTOWNS



THE  
**JACKSON**(BB3)



THE  
**IVAN**(BB2)



THE  
**HAMMOND**(BB1)



THE  
HAMMOND (BB1)

THE  
IVAN (BB2)

THE  
JACKSON (BB3)

Artist's Concept

ELEVATION 1

**PARADISE**  
DEVELOPMENTS®



THE  
JACKSON (BB3)



THE  
HAMMOND (BB1)



T  
HAMMO



THE  
BOND(BB1)

THE  
IVAN(BB2)

THE  
JACKSON(BB3)

Artist's Concept

ELEVATION 2

**PARADISE**  
DEVELOPMENTS®

URBAN  
TOWNS

# THE HAMMOND (BB1)

ELEVATION 1  
1510 SQ.FT.



Artist's Concept



ELEVATION 2  
1510 SQ.FT.

WHITBY MEADOWS  
newTOWNS



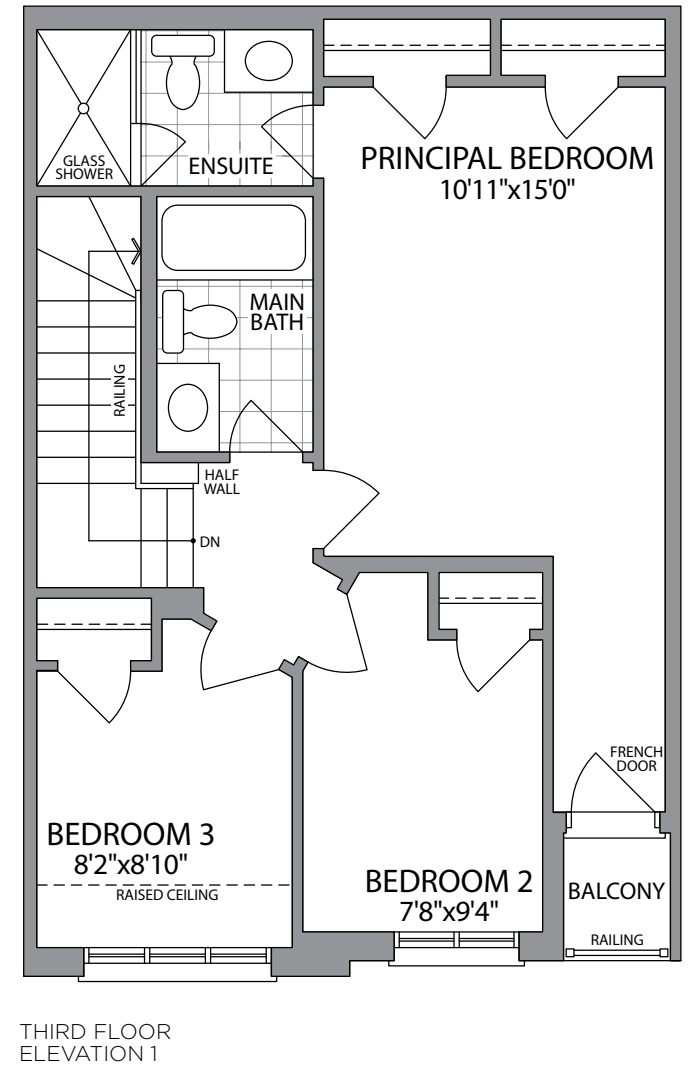
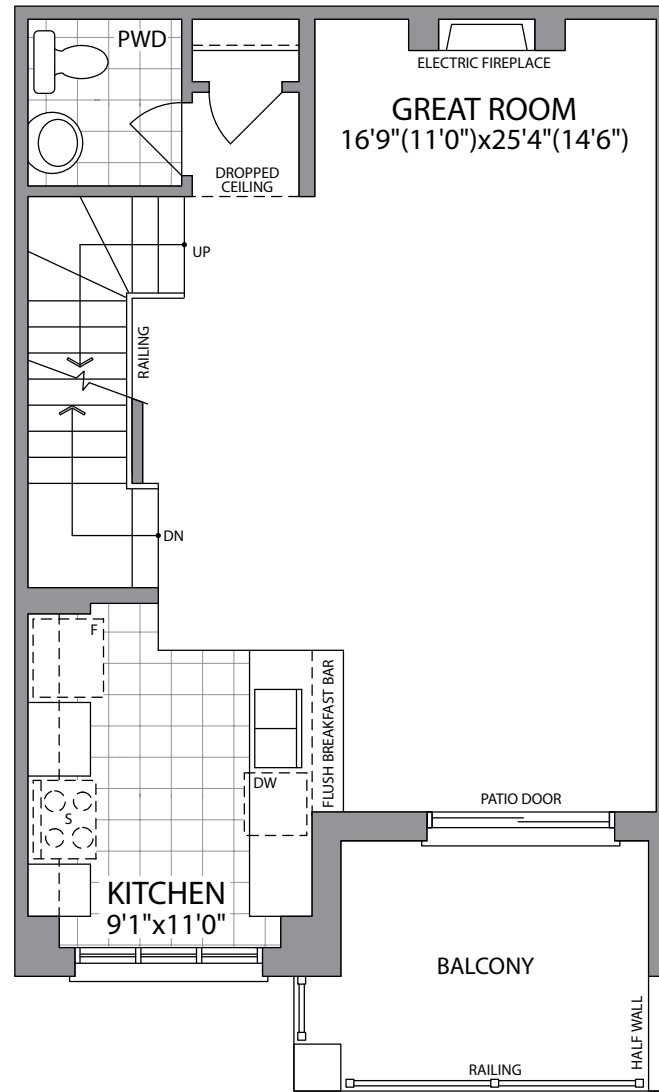
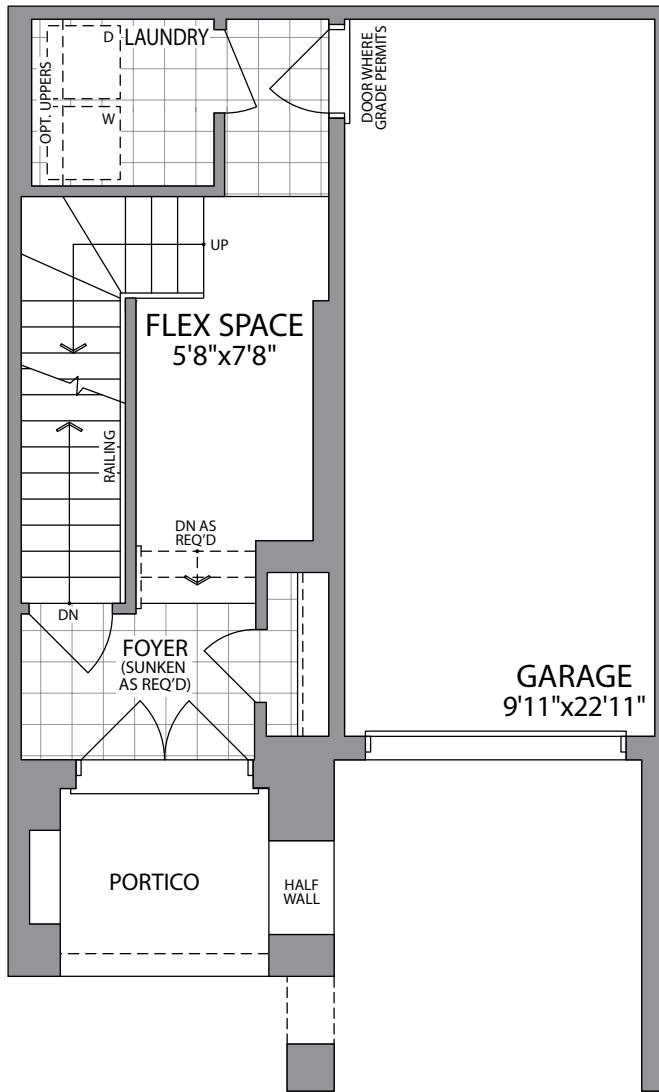
Artist's Concept

**PARADISE**  
DEVELOPMENTS®

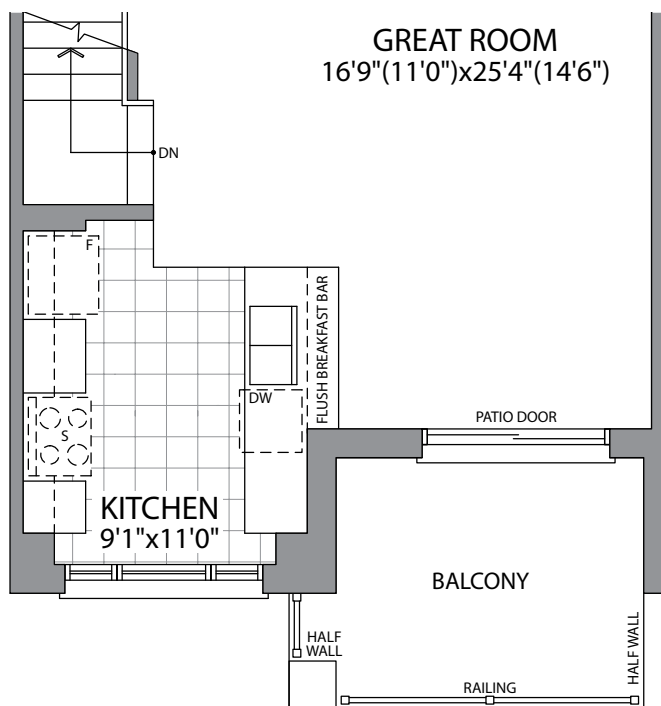
URBAN TOWNS

ELEVATION 1 & 2

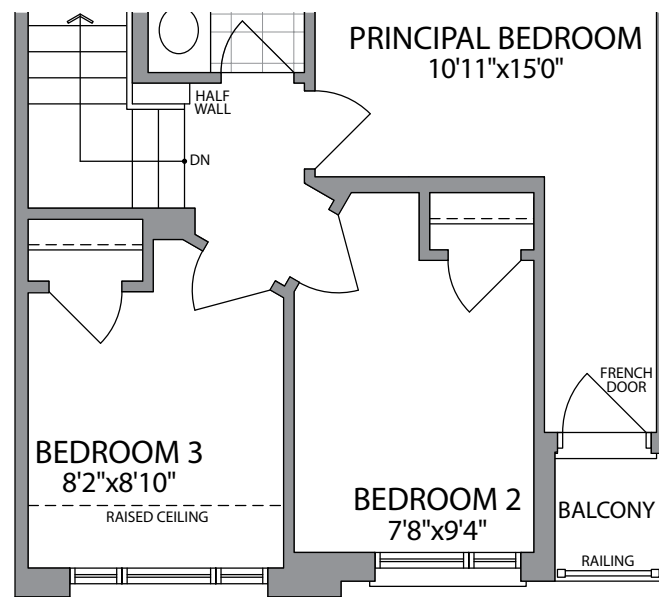
# THE HAMMOND (BB1)



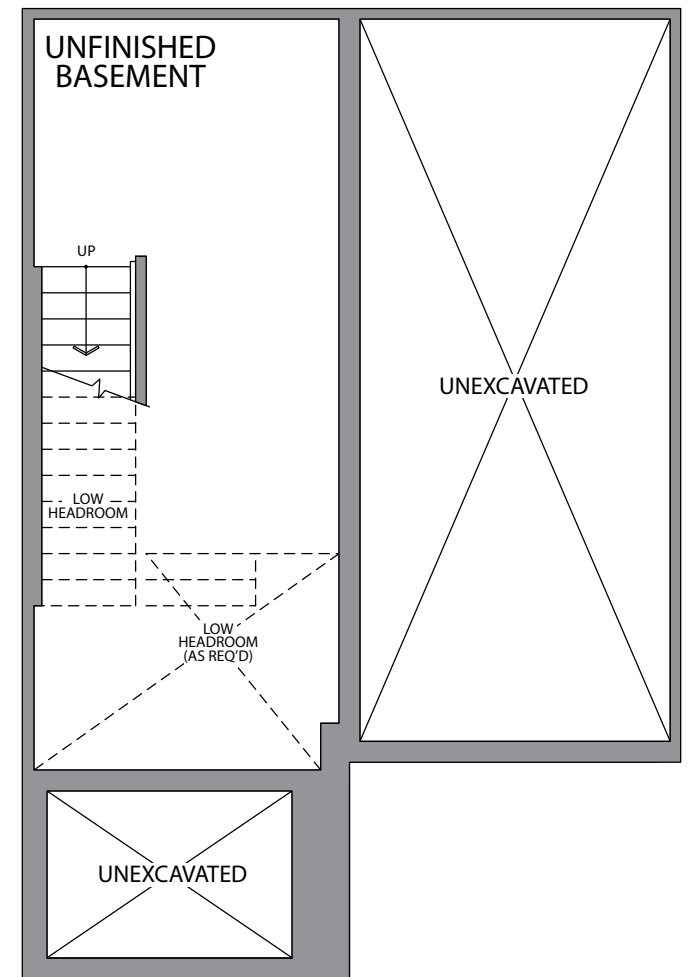
# 1510 SQ.FT.



MAIN FLOOR  
ELEVATION 2



THIRD FLOOR  
ELEVATION 2



BASEMENT  
ELEVATION 1 & 2

URBAN  
TOWNS

# THE IVAN (BB2)

ELEVATION 1  
1540 SQ.FT.



Artist's Concept

ELEVATION 2  
1540 SQ.FT.

WHITBY MEADOWS  
newTOWNS



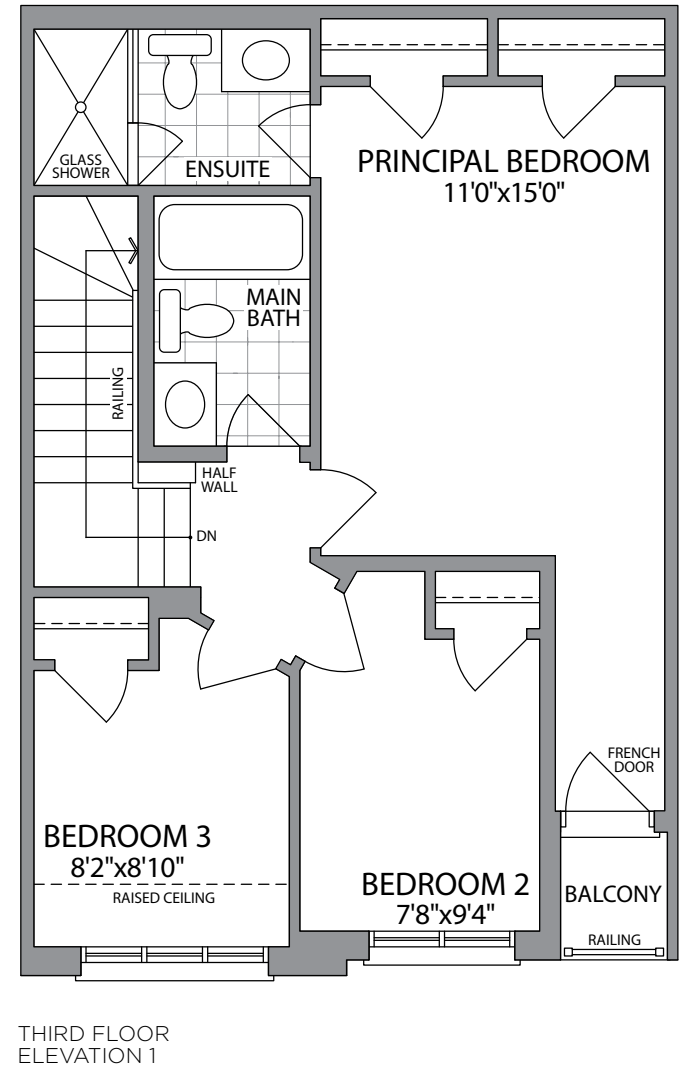
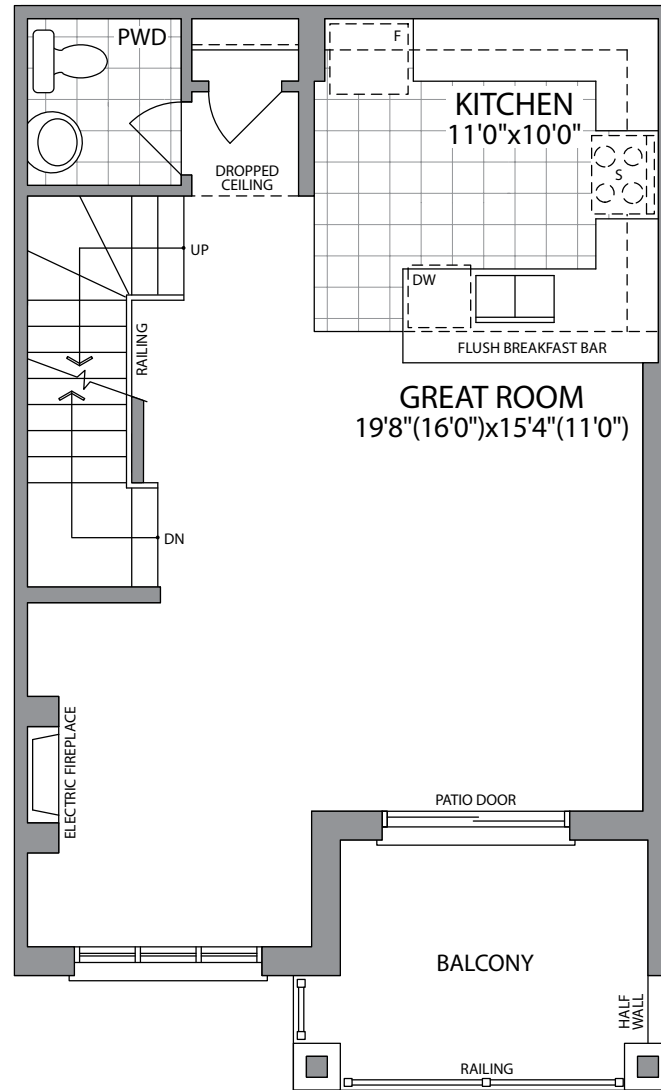
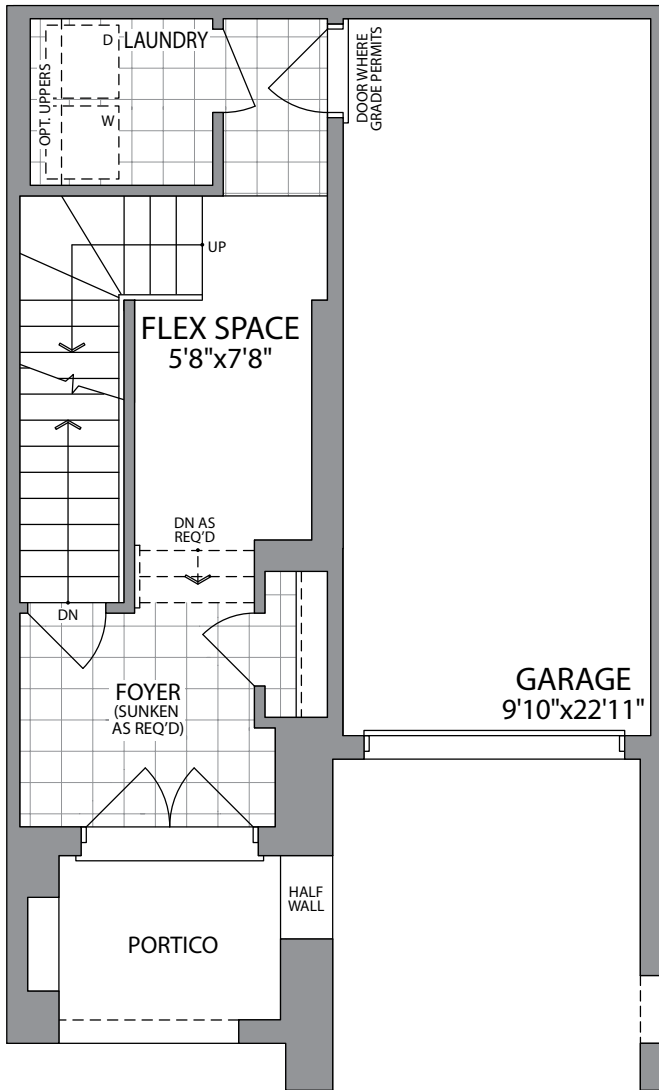
Artist's Concept

**PARADISE**  
DEVELOPMENTS®

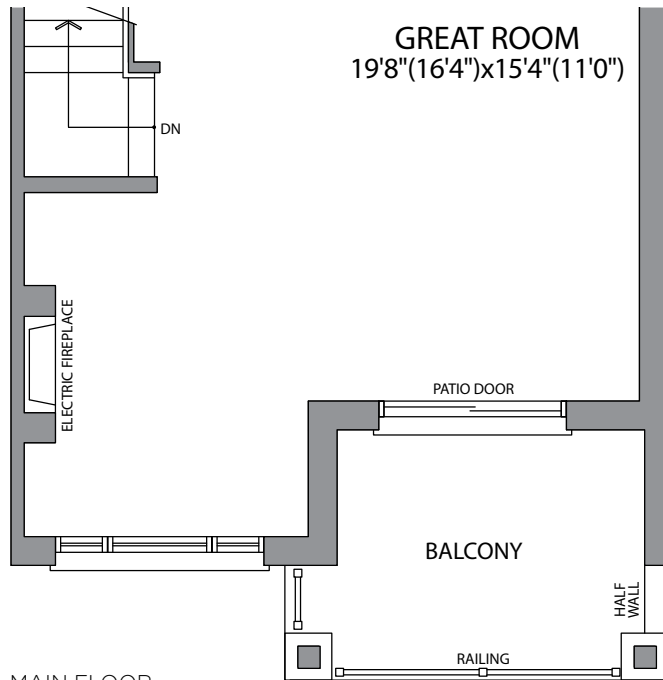
# URBAN TOWNS

ELEVATION 1 & 2

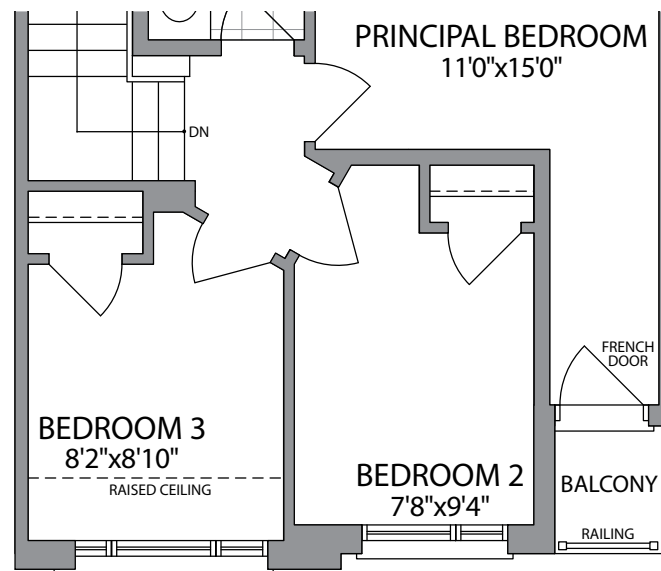
# THE IVAN (BB2)



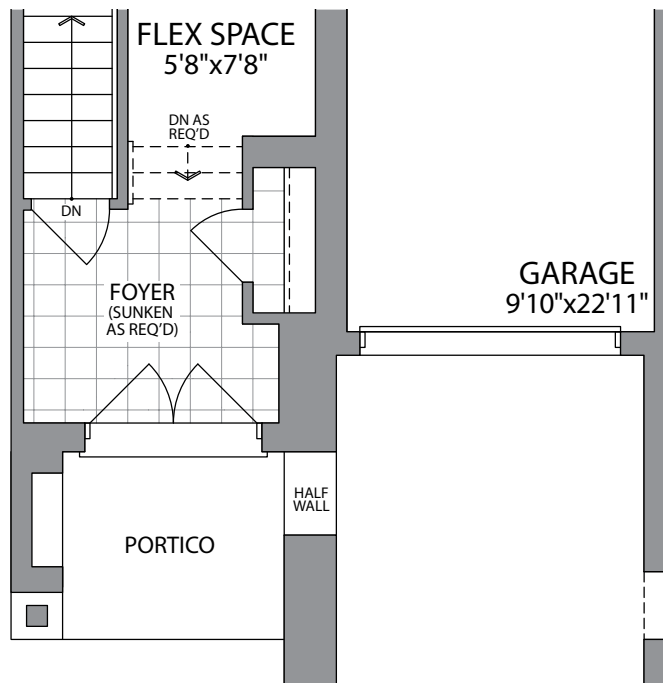
# 1540 SQ.FT.



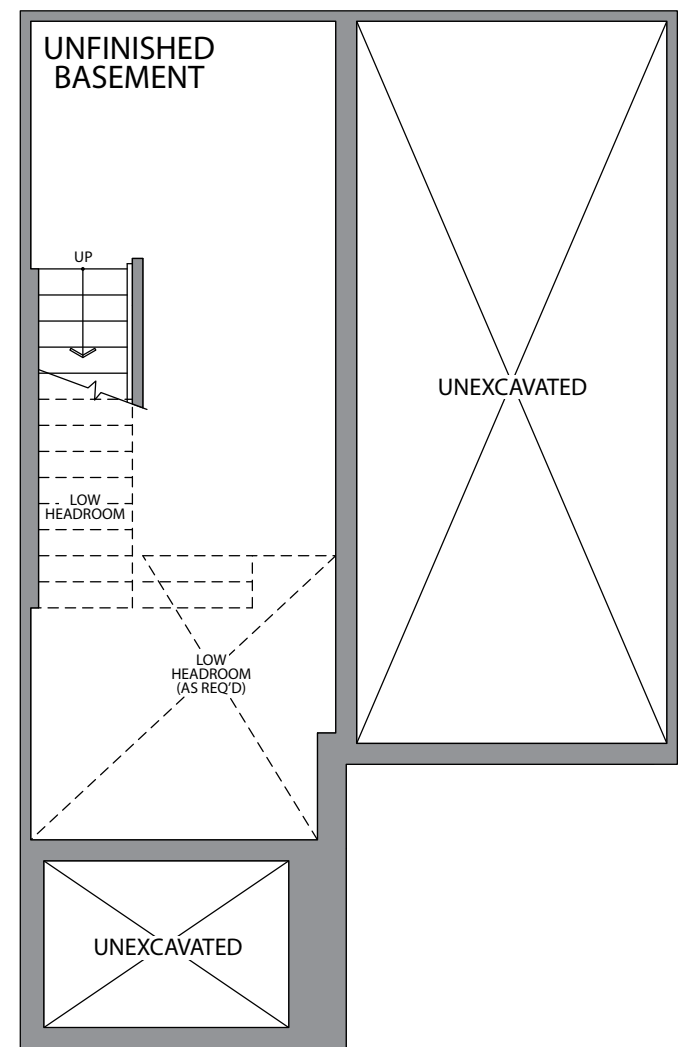
MAIN FLOOR  
ELEVATION 2



THIRD FLOOR  
ELEVATION 2



GROUND FLOOR  
ELEVATION 2



BASEMENT  
ELEVATION 1 & 2

URBAN  
TOWNS

# THE IVAN-MOD (BB2-MOD)





ELEVATION 1  
1540 SQ.FT.  
UNIT 42, 44 & 45

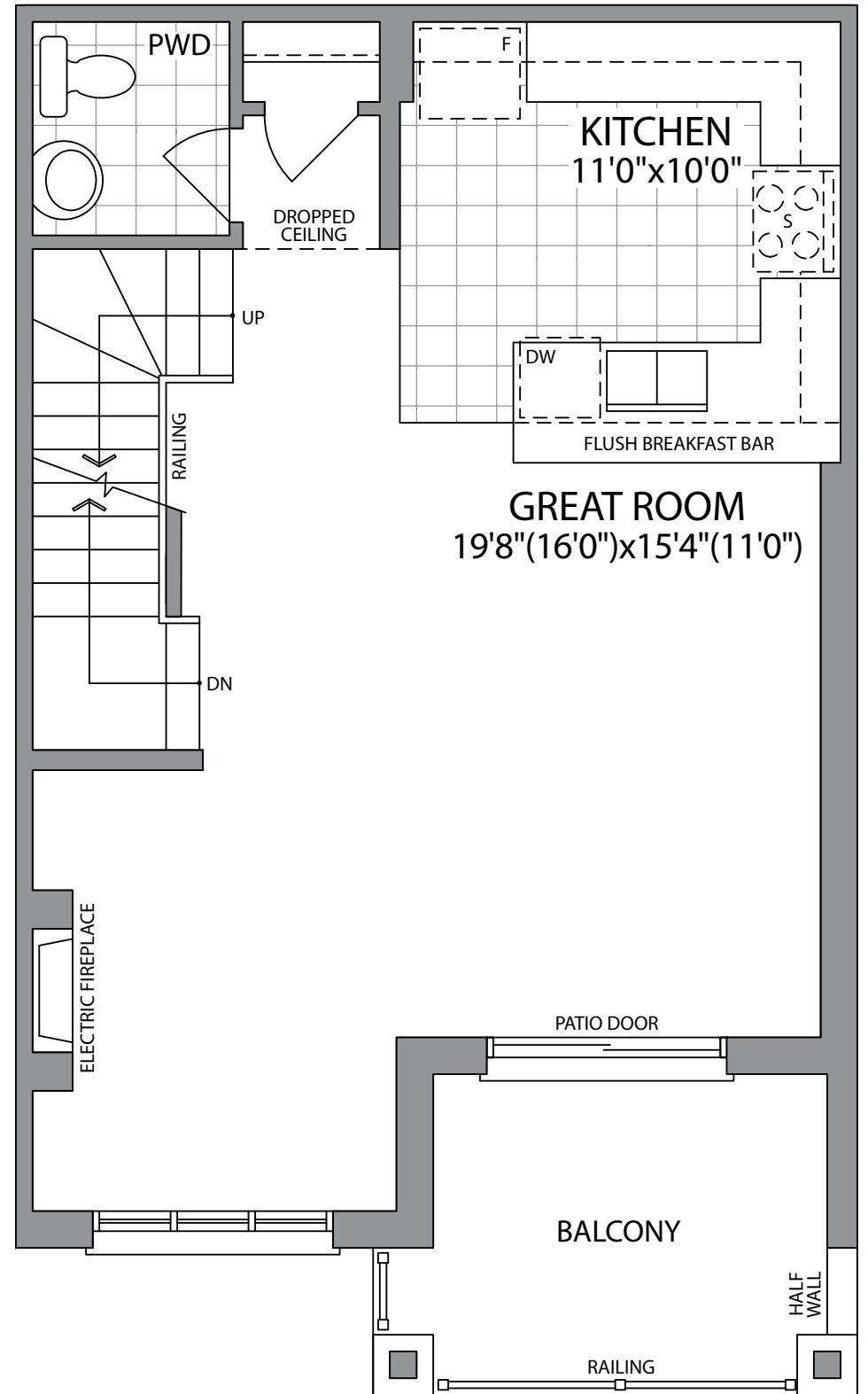
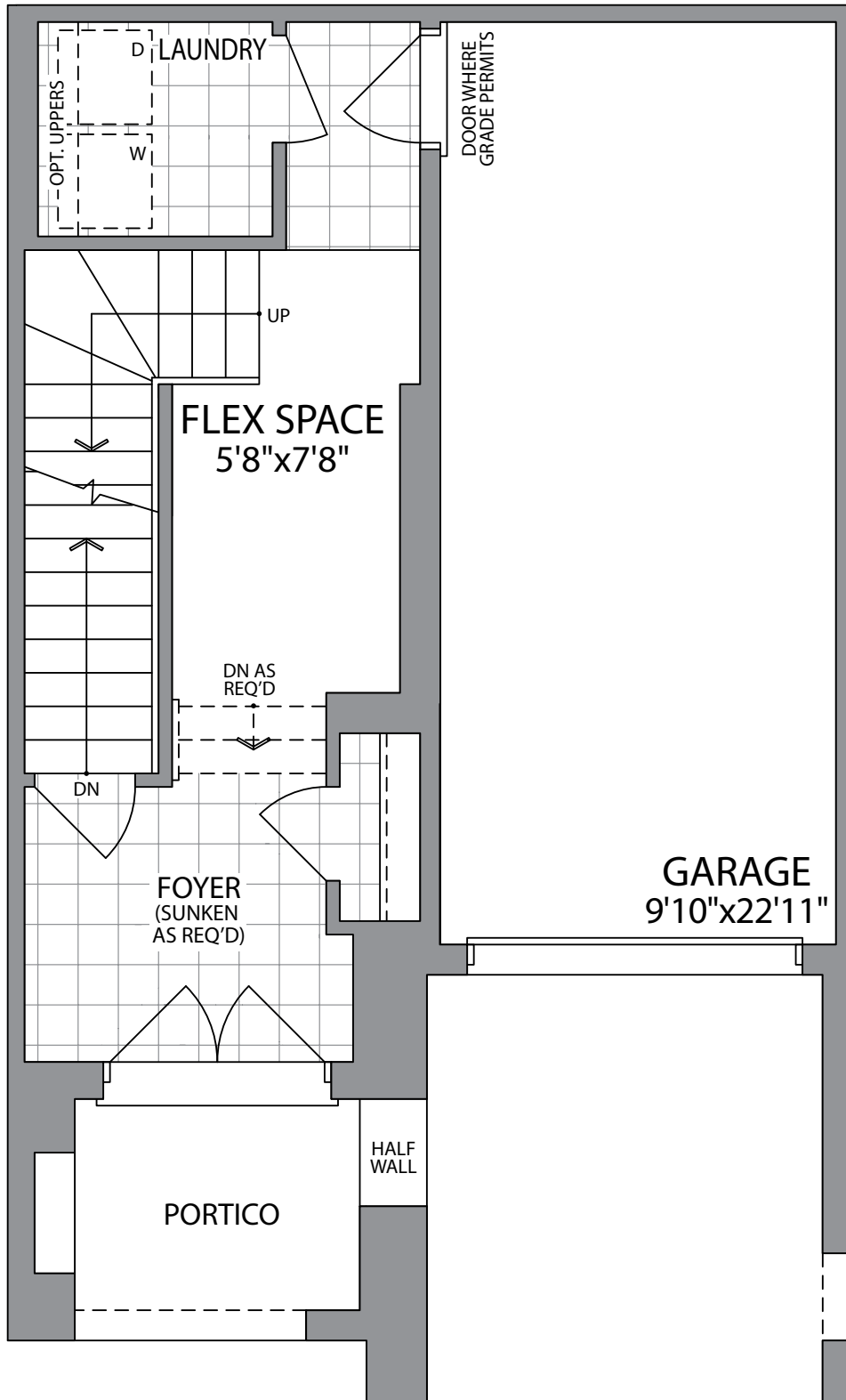
WHITBY MEADOWS  
newTOWns



Artist's Concept

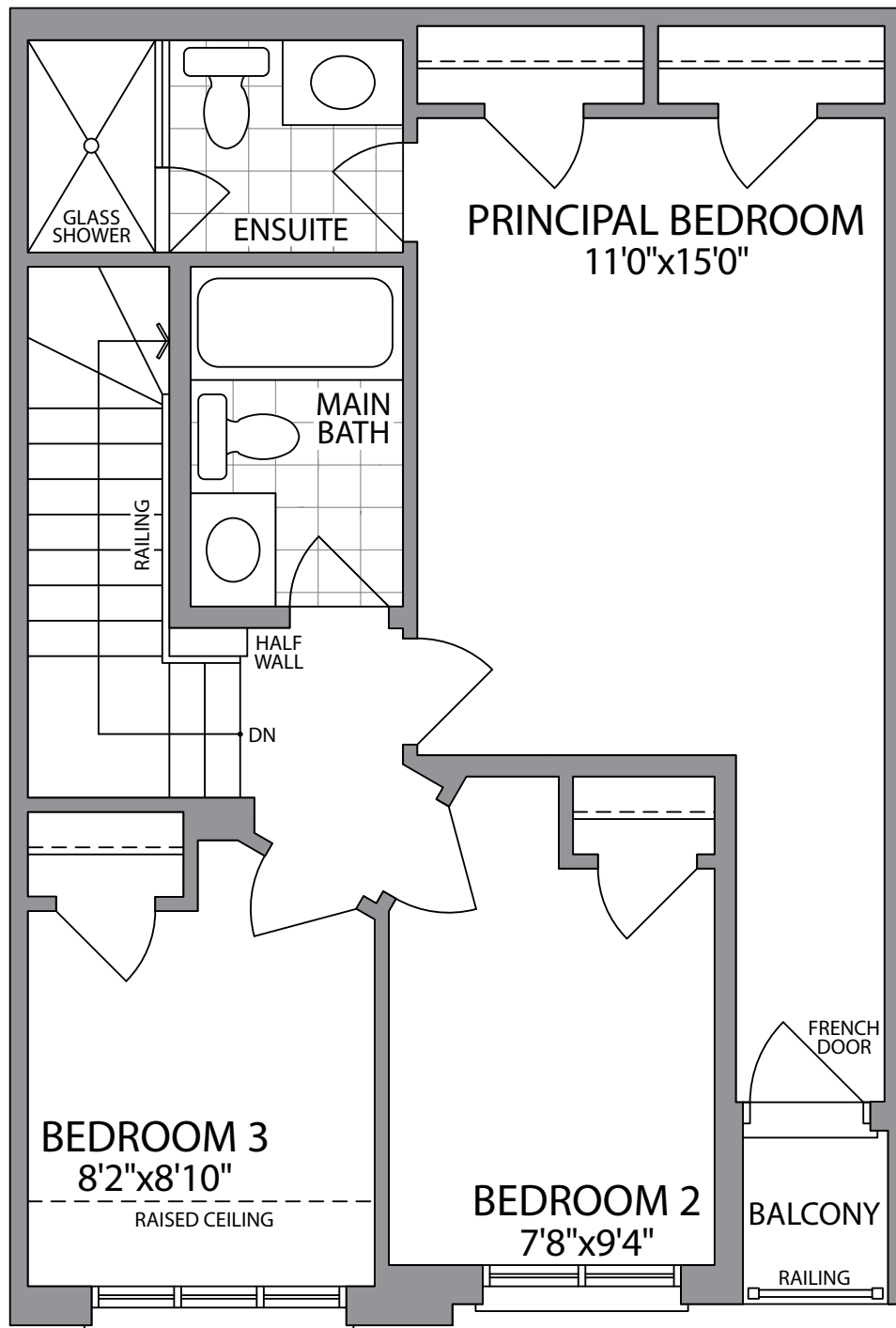
**PARADISE**  
DEVELOPMENTS®

# THE IVAN-MOD (BB2-MOD)

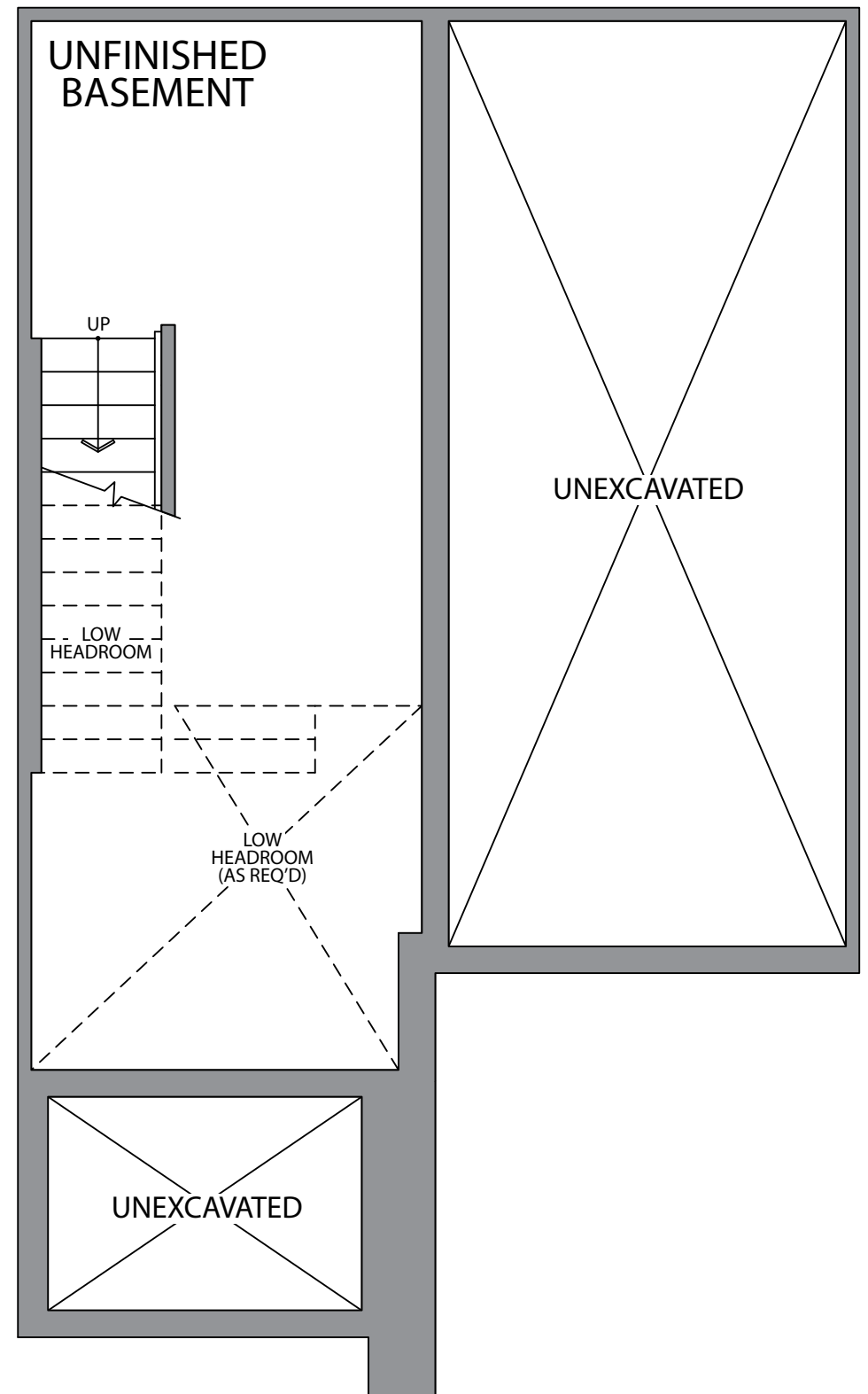


MAIN FLOOR  
ELEVATION 1

1540 SQ.FT. UNIT 42, 44 & 45



THIRD FLOOR  
ELEVATION 1



BASEMENT  
ELEVATION 1

URBAN  
TOWNS

# THE JACKSON (BB3)

ELEVATION 1C  
1640 SQ.FT.



Artist's Concept

ELEVATION 2C  
1640 SQ.FT.

WHITBY MEADOWS  
newTOWNS



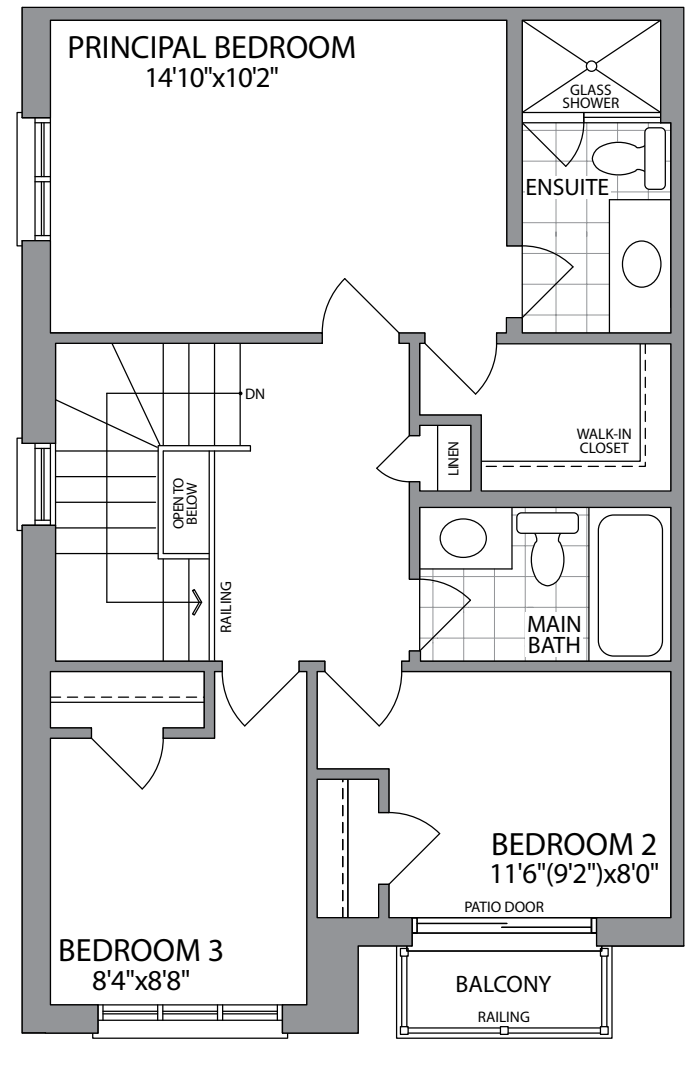
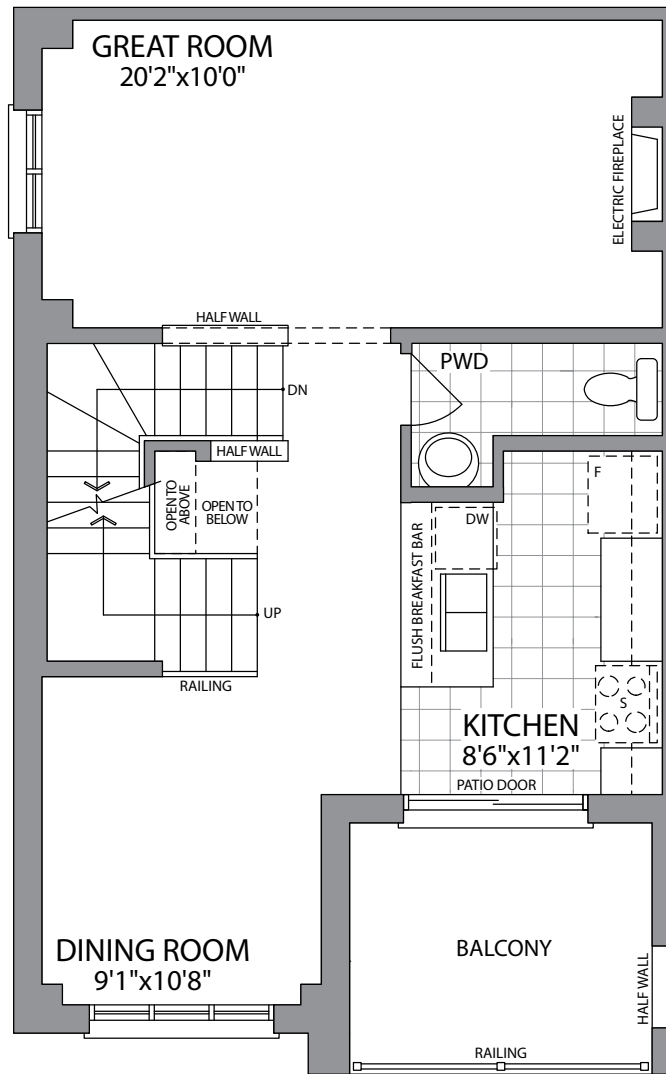
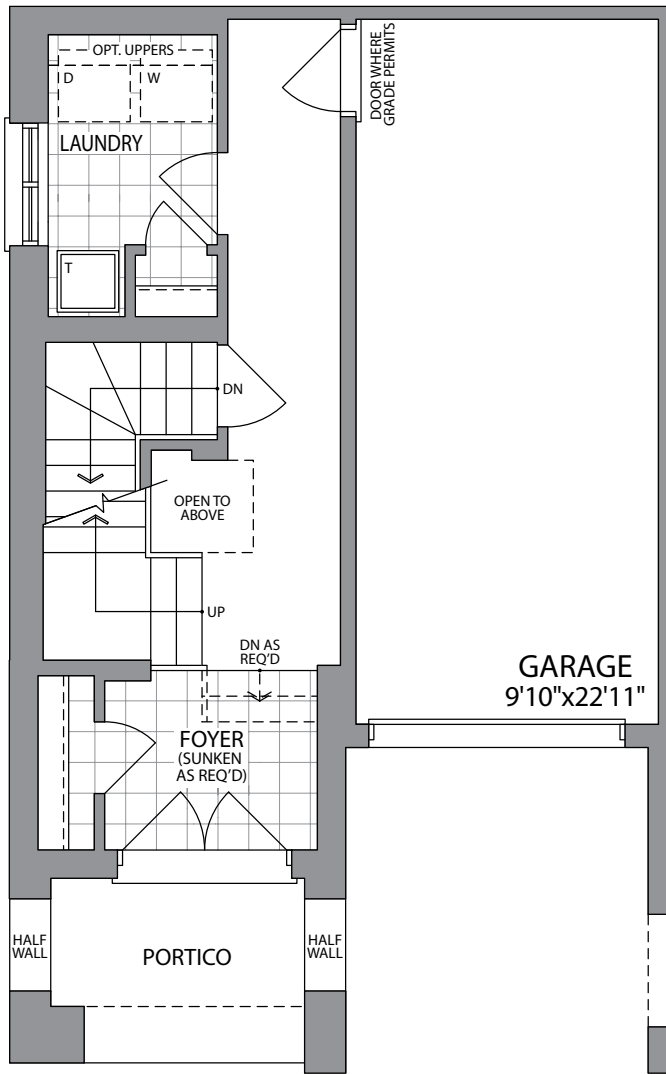
Artist's Concept

**PARADISE**  
DEVELOPMENTS®

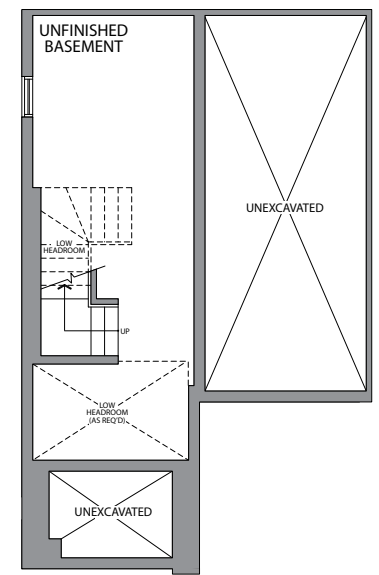
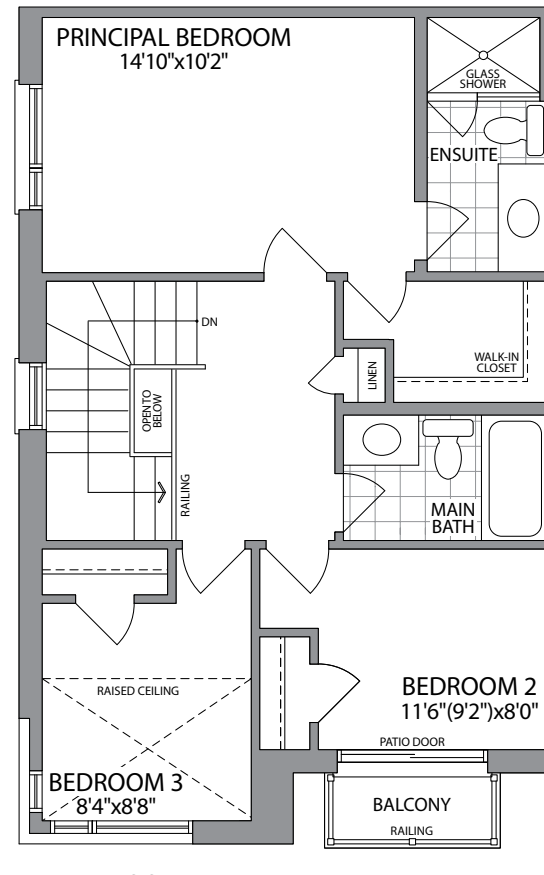
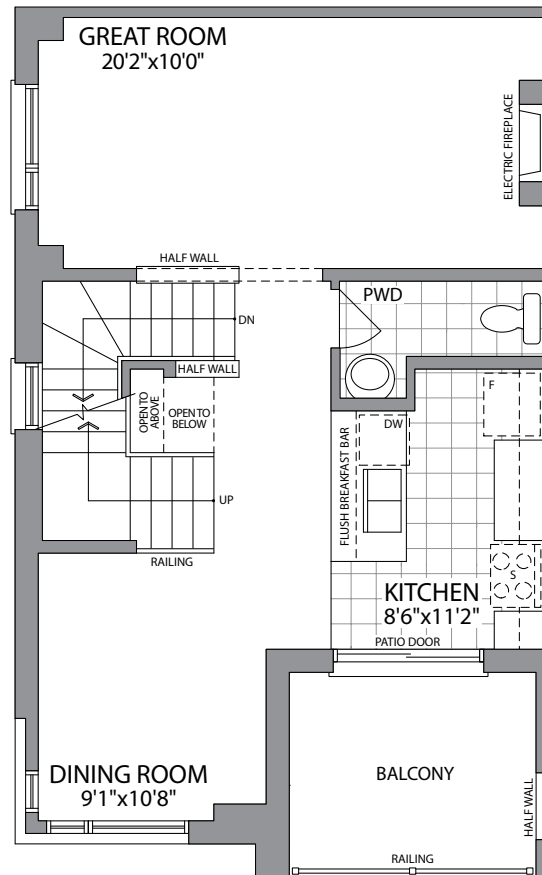
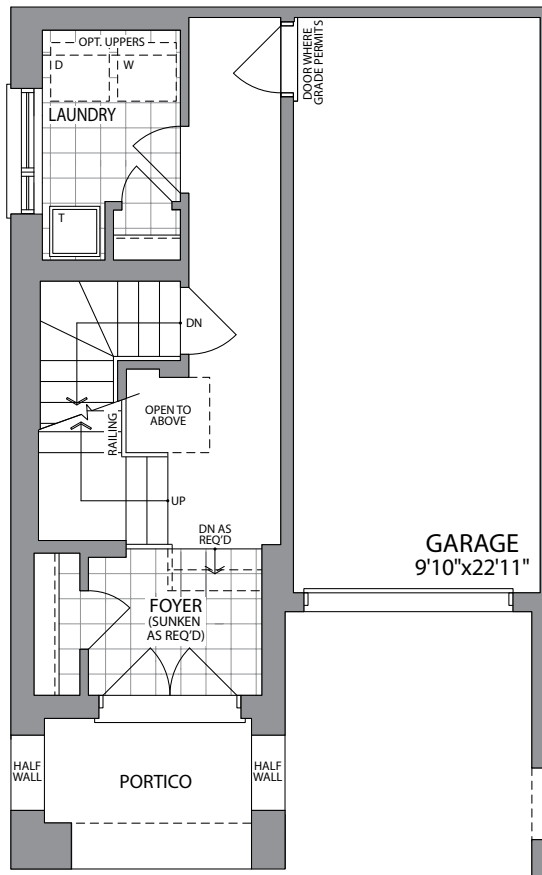
URBAN TOWNS

ELEVATION 1C & 2C

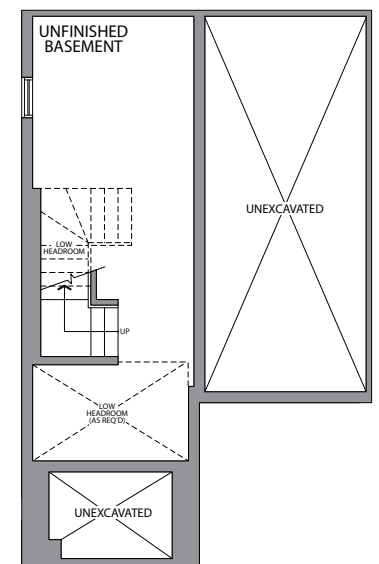
# THE JACKSON (BB3)



# 1640 SQ.FT.



BASEMENT ELEVATION 1C



BASEMENT ELEVATION 2C

GROUND FLOOR ELEVATION 2C

MAIN FLOOR ELEVATION 2C

THIRD FLOOR ELEVATION 2C

URBAN  
TOWNS

# THE JACKSON-MOD (BB3-MOD)





ELEVATION 1C  
1640 SQ.FT.  
UNIT 38 & 46

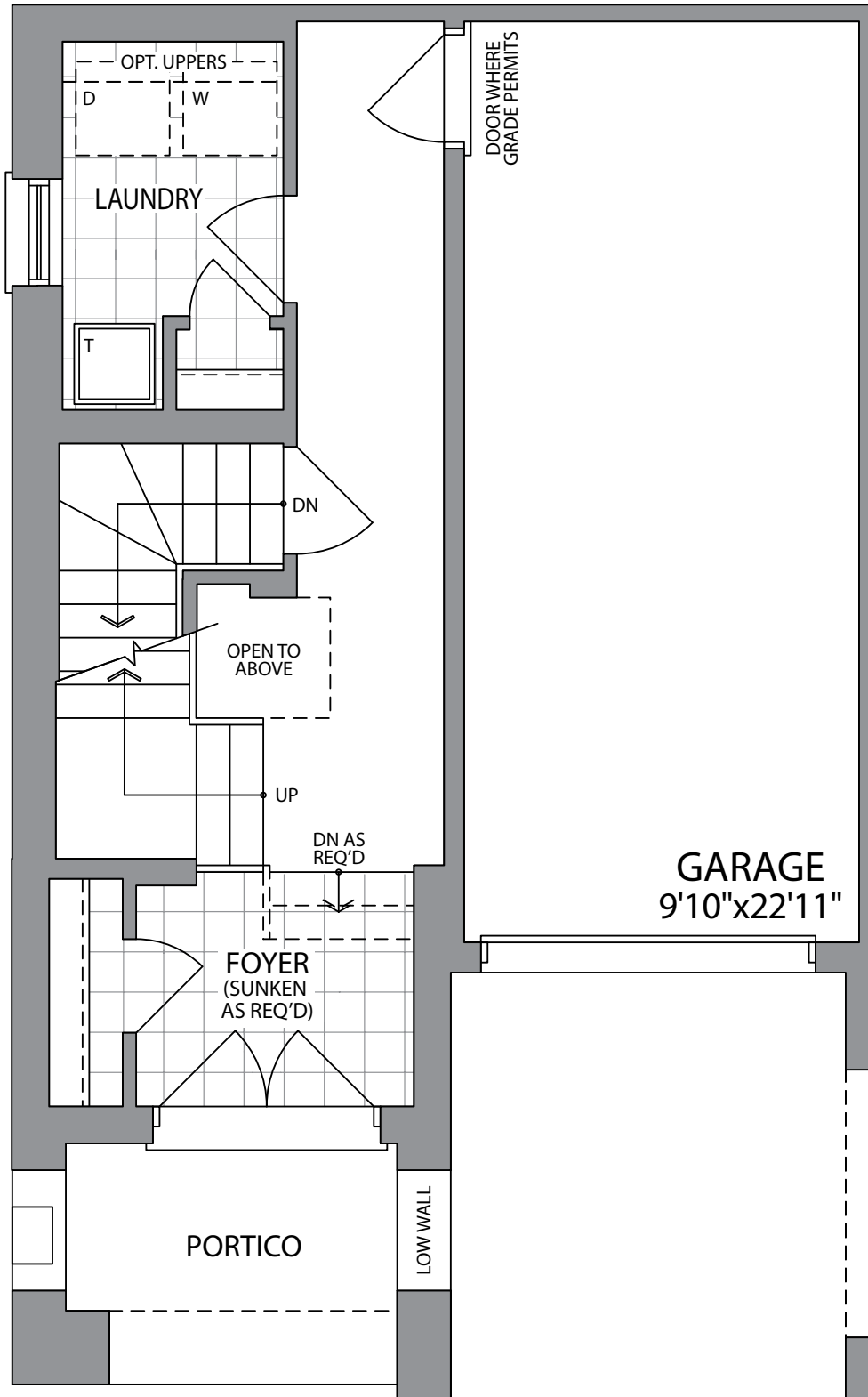
WHITBY MEADOWS  
newTOWNS



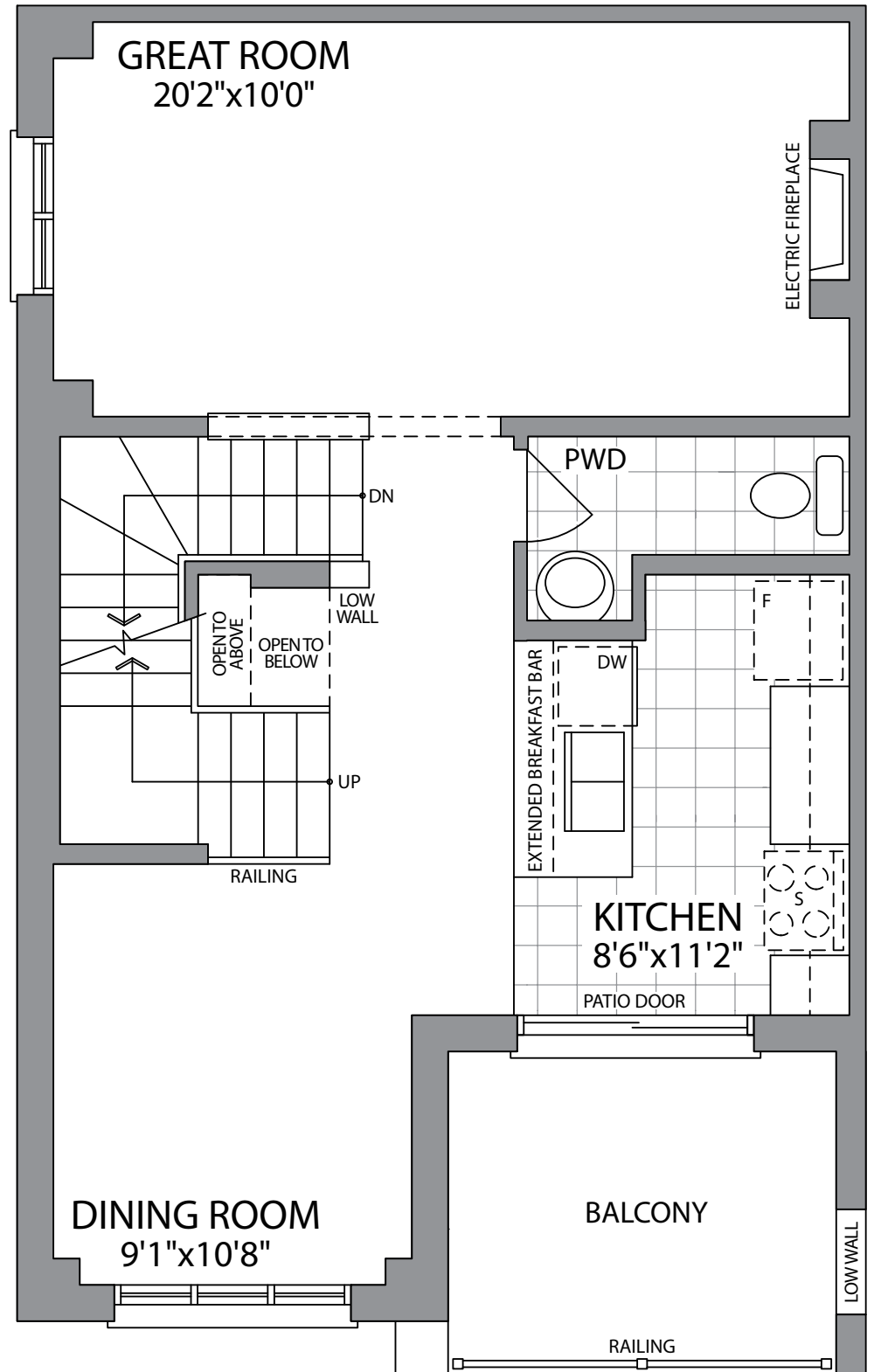
Artist's Concept

**PARADISE**  
DEVELOPMENTS®

# THE JACKSON-MOD (BB3-MOD)

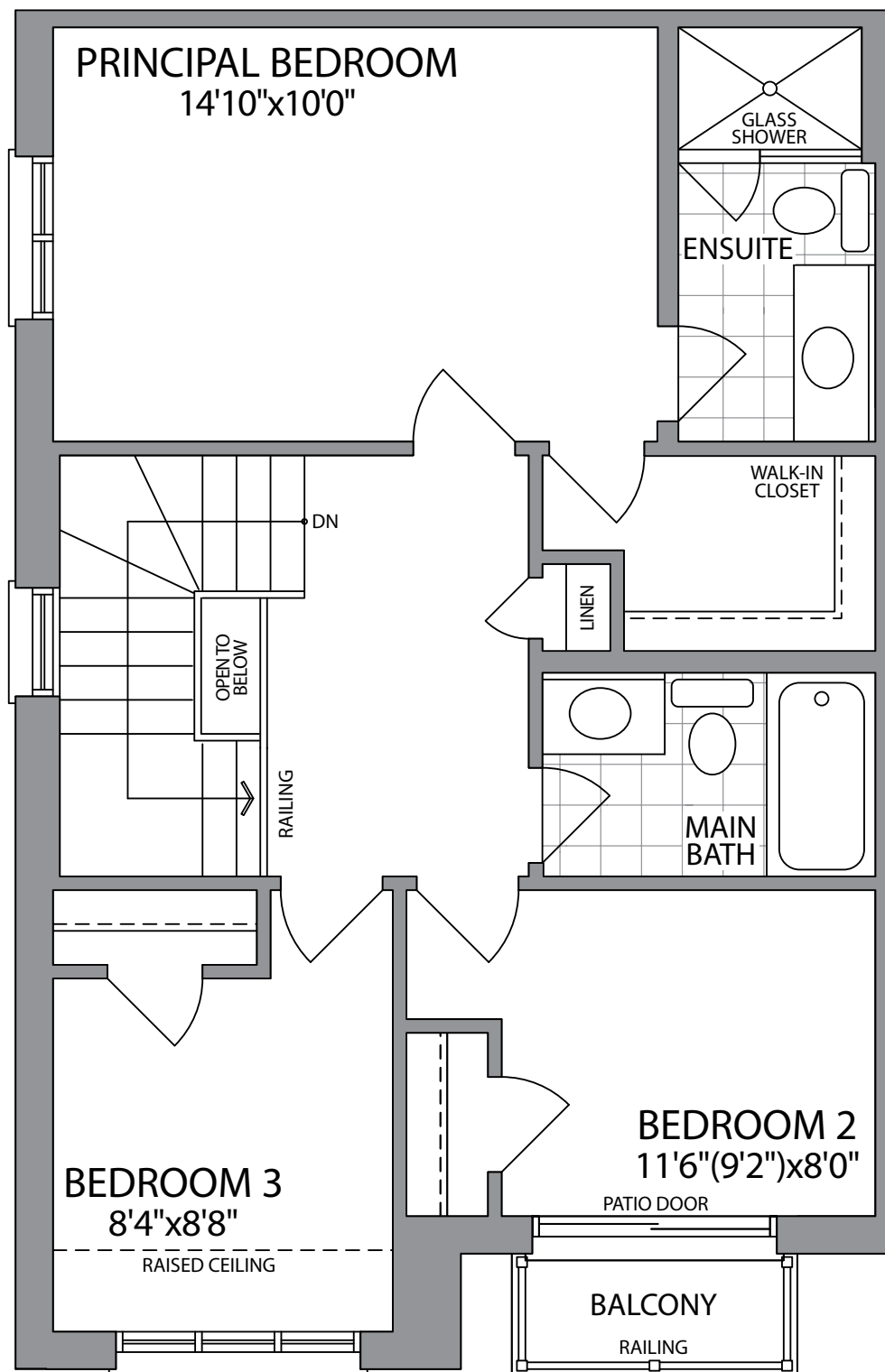


GROUND FLOOR  
ELEVATION 1C

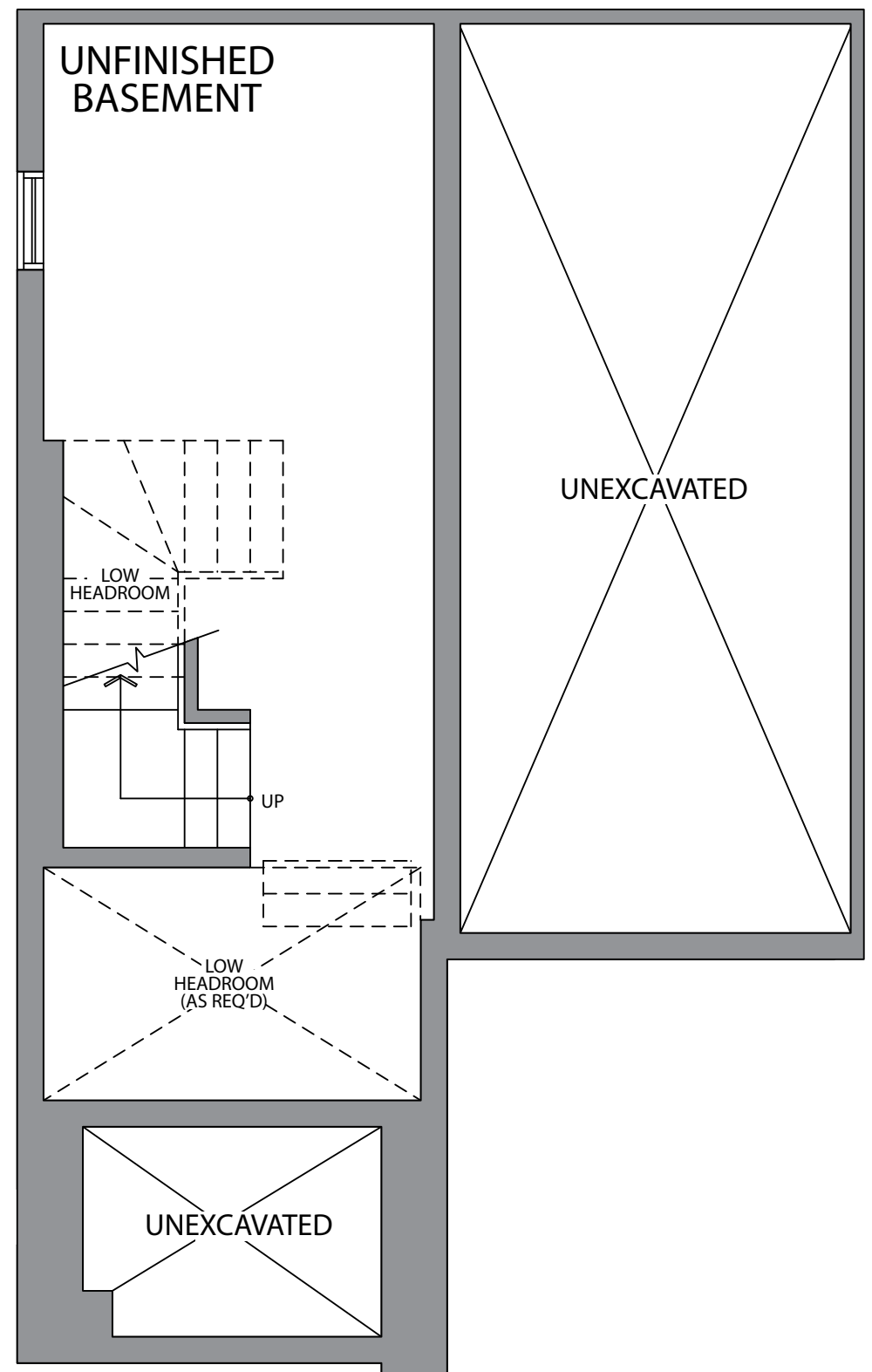


MAIN FLOOR  
ELEVATION 1C

1640 SQ.FT. UNIT 38 & 46



THIRD FLOOR  
ELEVATION 1C



BASEMENT  
ELEVATION 1C

URBAN  
TOWNS

# THE JACKSON-MOD 1 (BB3-MOD 1)



ELEVATION 1C  
1660 SQ.FT.  
UNIT 53

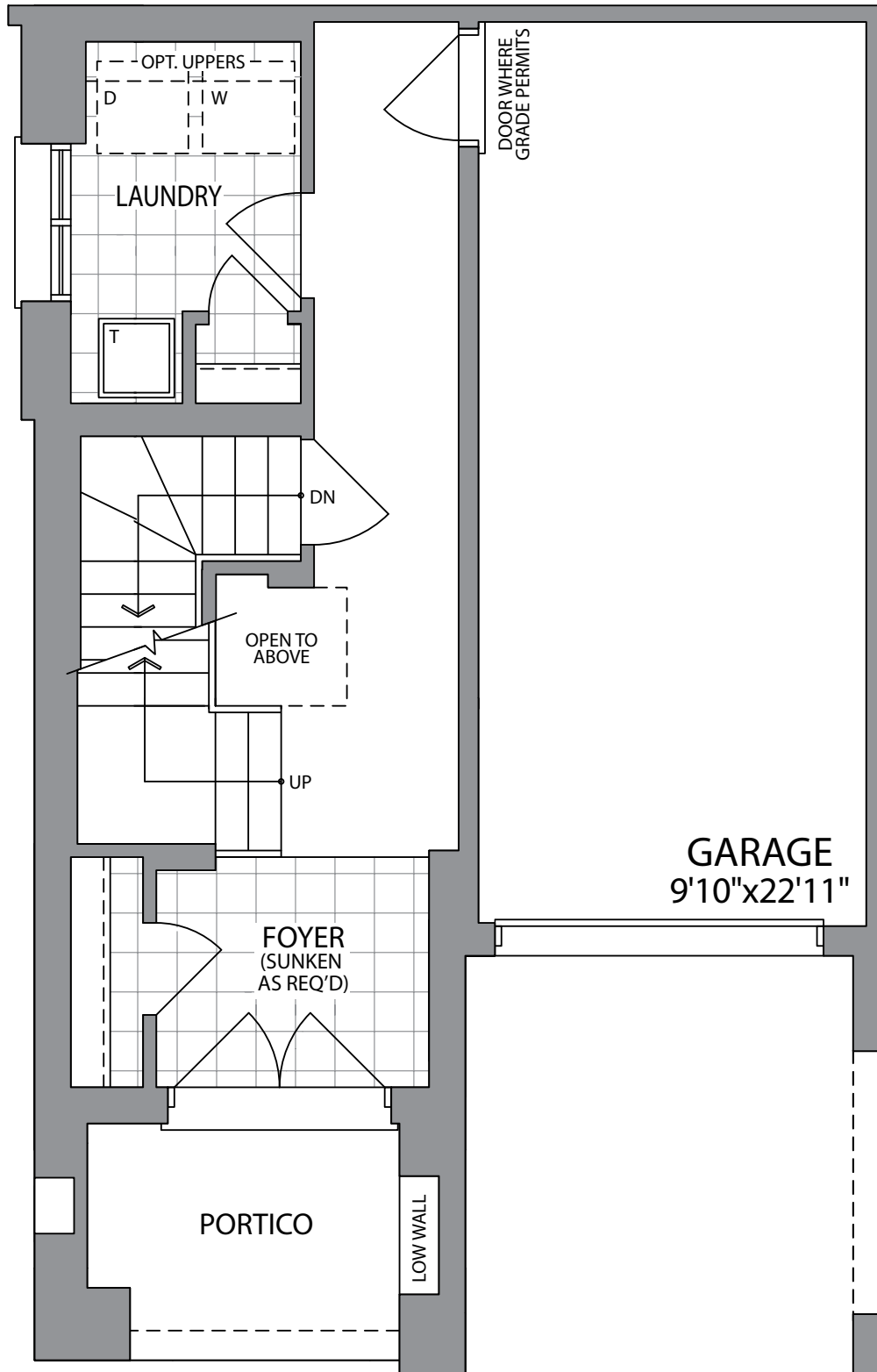
WHITBY MEADOWS  
newTOWNS



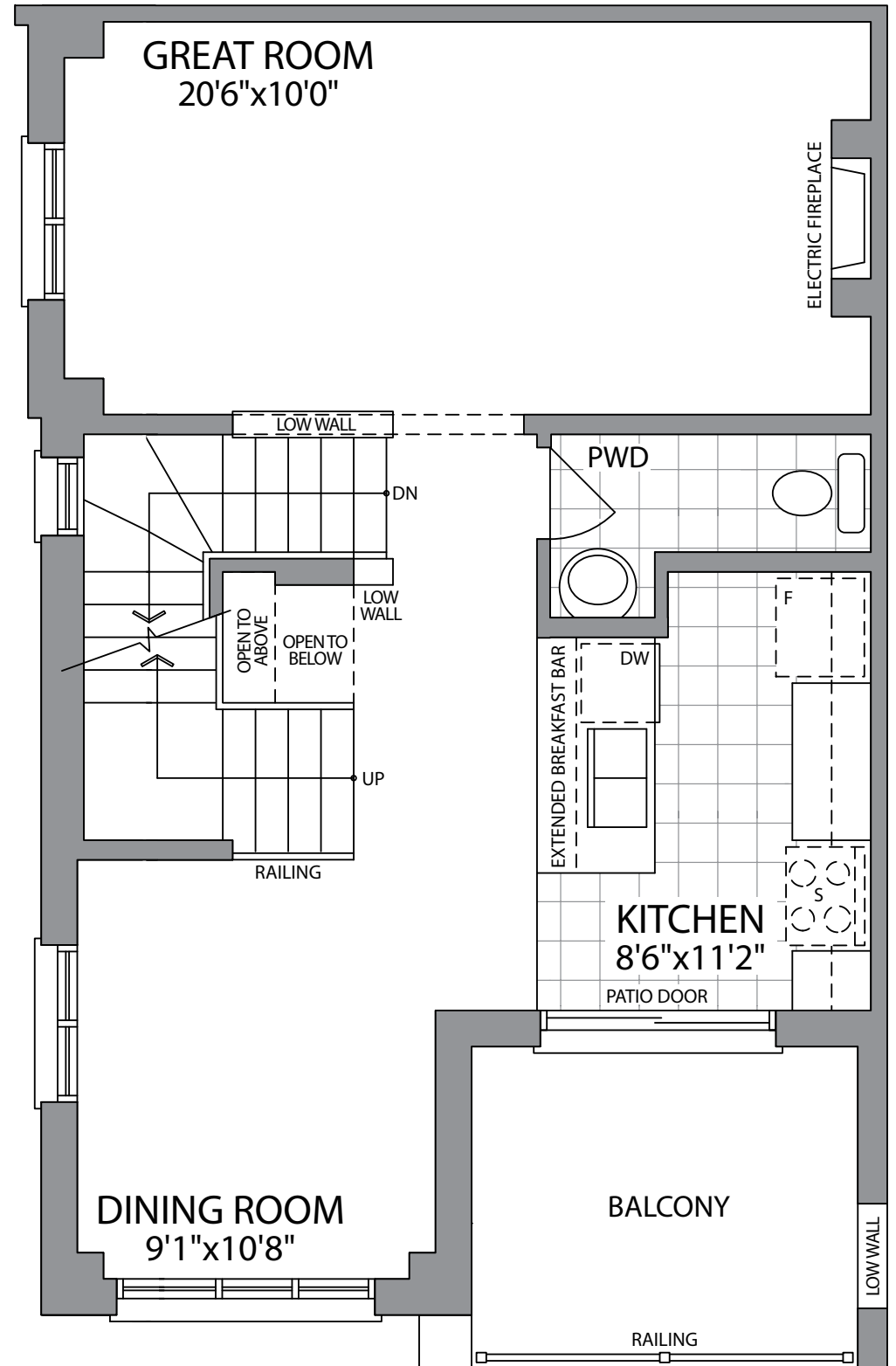
Artist's Concept

**PARADISE**  
DEVELOPMENTS®

# THE JACKSON-MOD 1 (BB3-MOD 1)

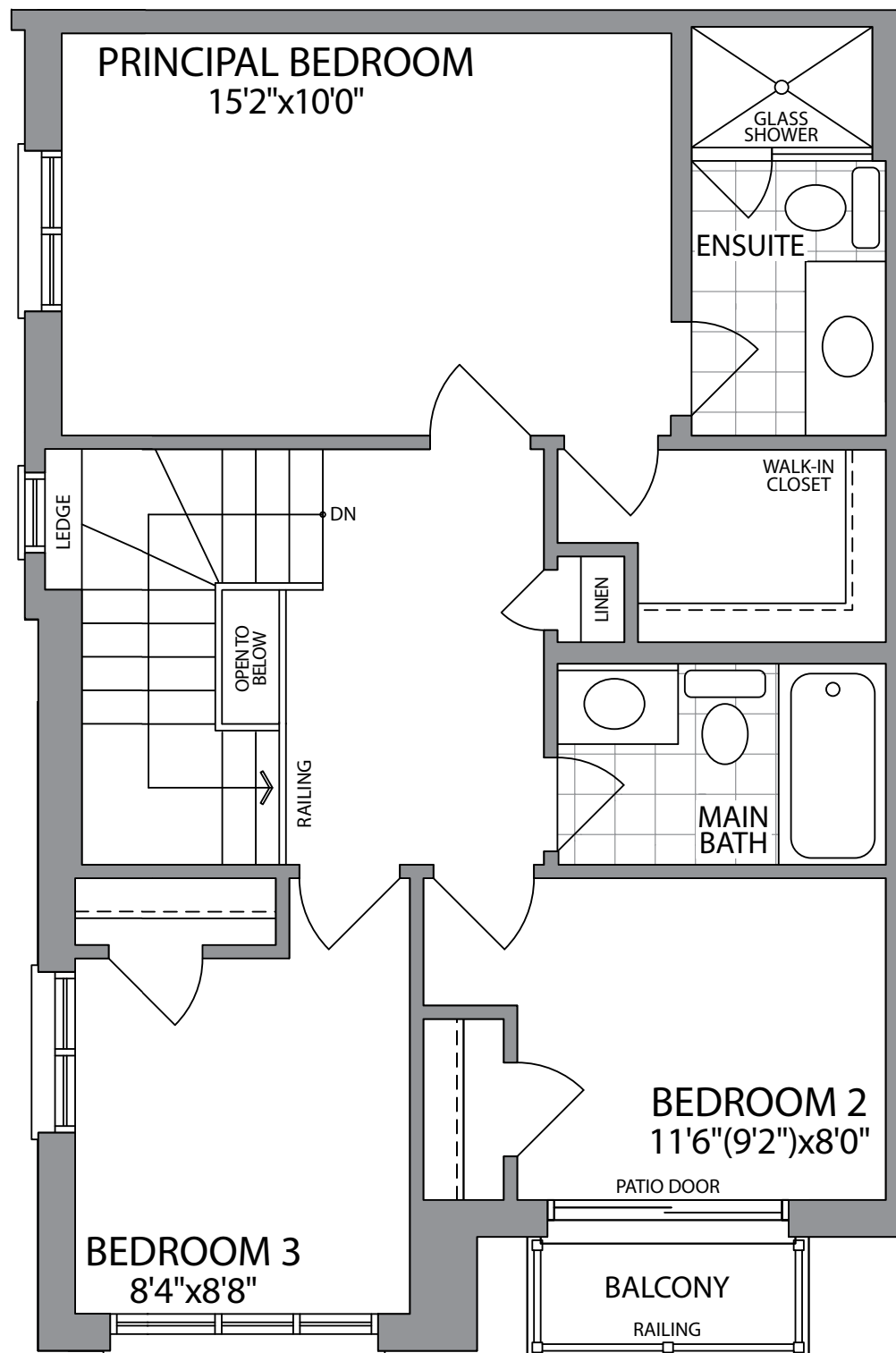


GROUND FLOOR  
ELEVATION 1C

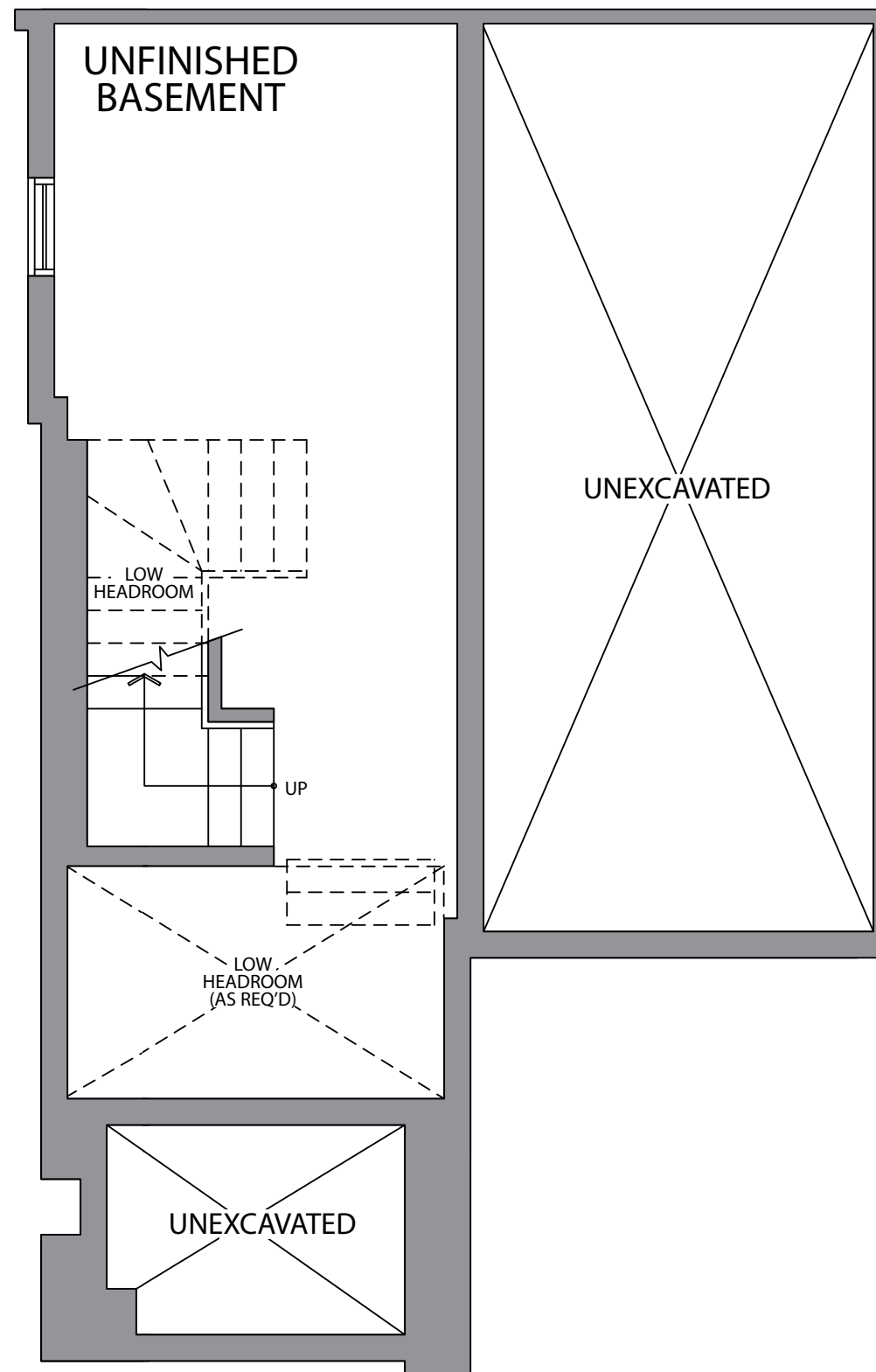


MAIN FLOOR  
ELEVATION 1C

1660 SQ.FT. UNIT 53



THIRD FLOOR  
ELEVATION 1C



BASEMENT  
ELEVATION 1C

URBAN  
TOWNS

# THE JACKSON-MOD 1 (BB3-MOD 1)





ELEVATION 2C

1660 SQ.FT.

UNIT 52 & 63

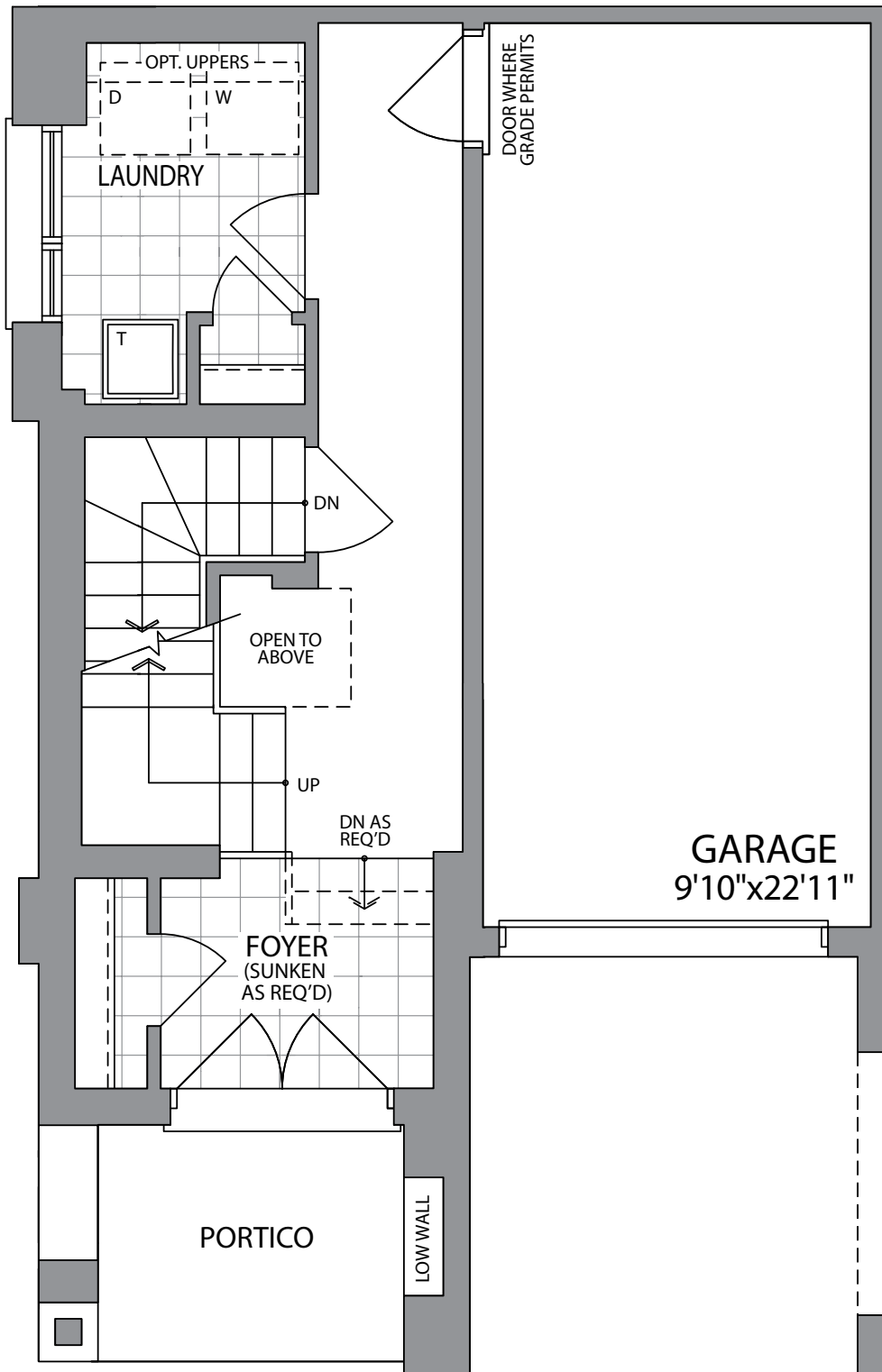
WHITBY MEADOWS  
newTOWNS



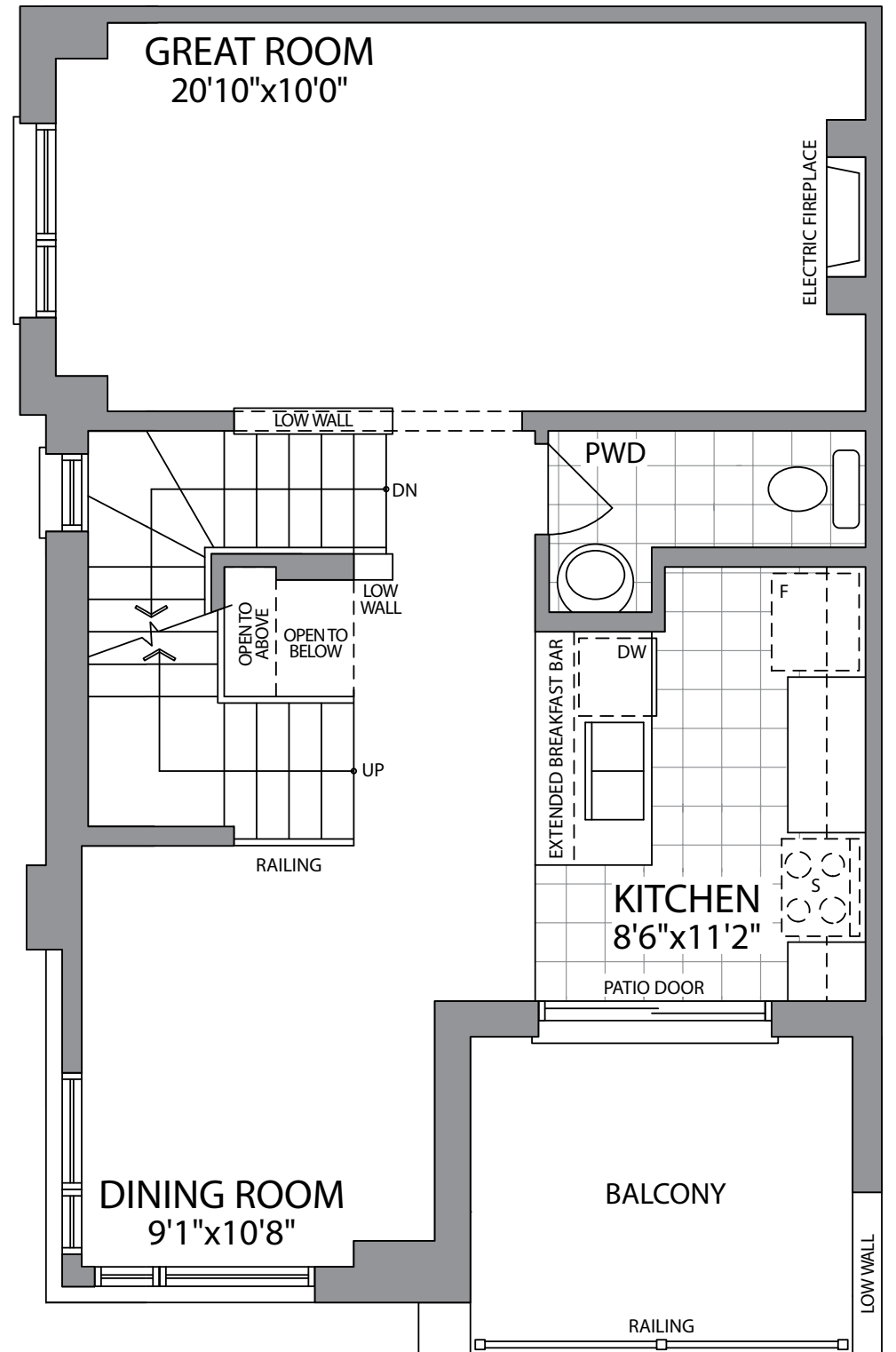
Artist's Concept

PARADISE  
DEVELOPMENTS®

# THE JACKSON-MOD 1 (BB3-MOD 1)

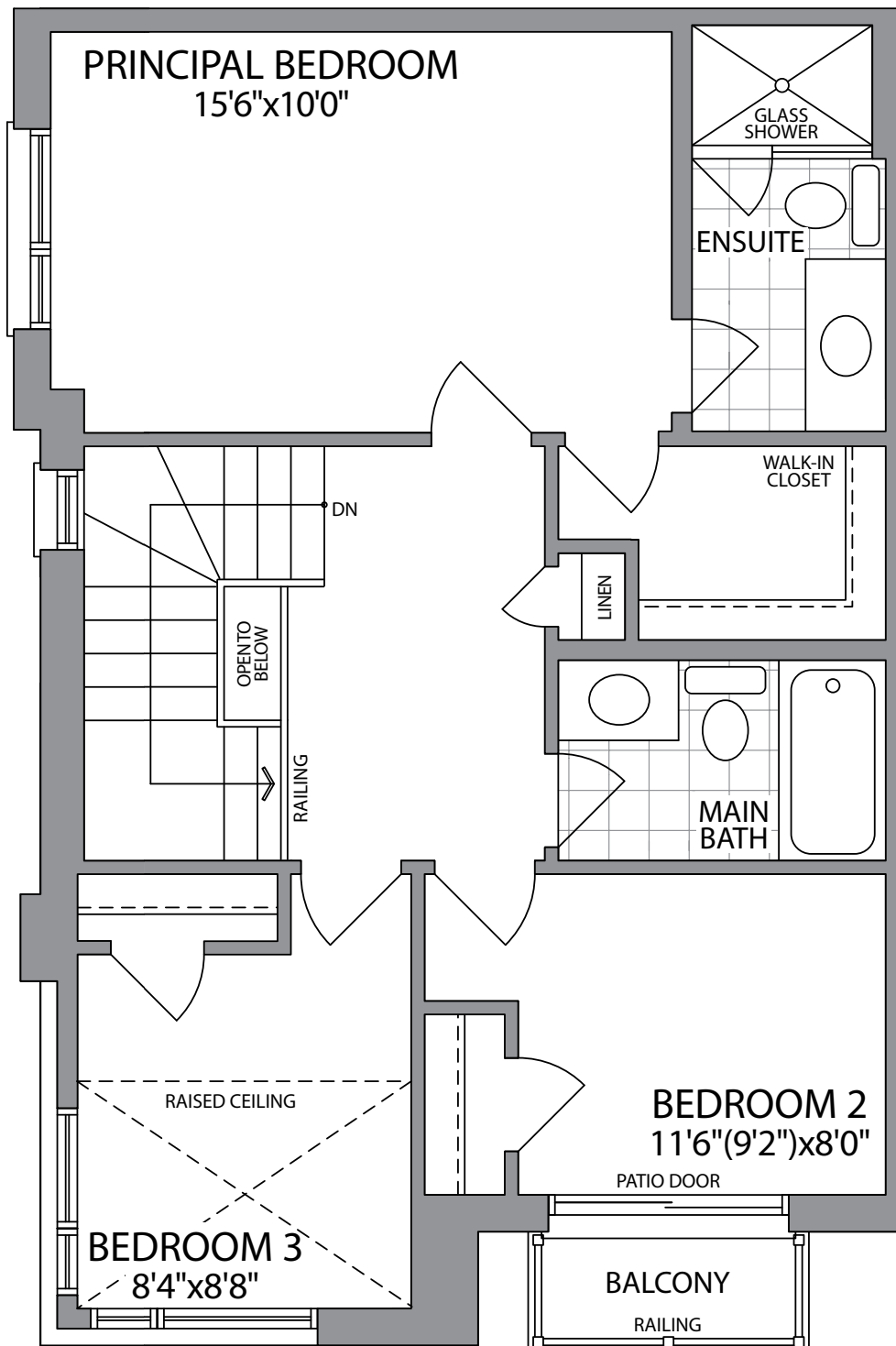


GROUND FLOOR  
ELEVATION 2C

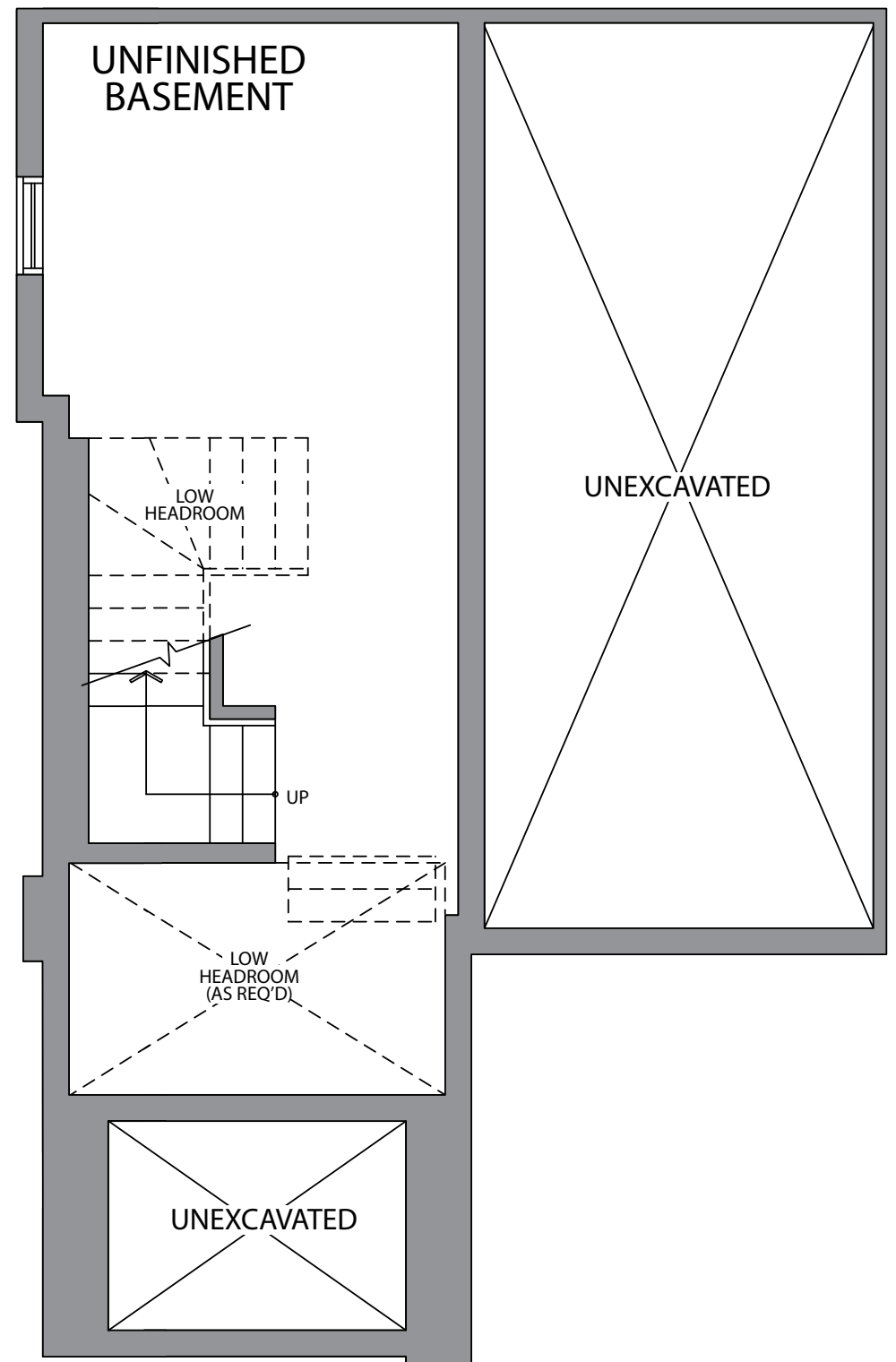


MAIN FLOOR  
ELEVATION 2C

1660 SQ.FT. UNIT 52 & 63



THIRD FLOOR  
ELEVATION 2C



BASEMENT  
ELEVATION 2C

URBAN  
TOWNS

# THE JACKSON-MOD 2 (BB3-MOD 2)



ELEVATION 1C  
1660 SQ.FT.  
UNIT 24

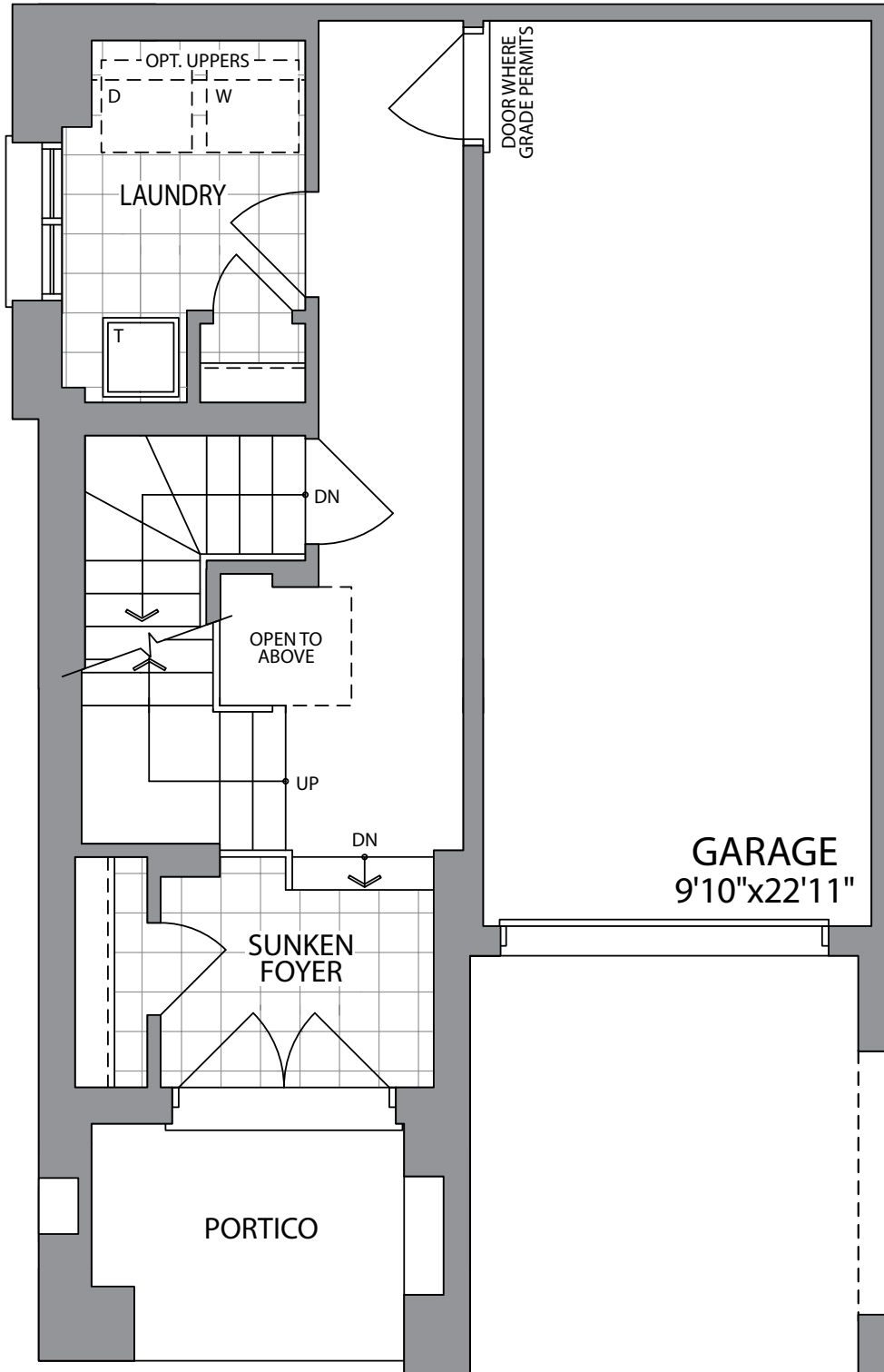
WHITBY MEADOWS  
newTOWNS



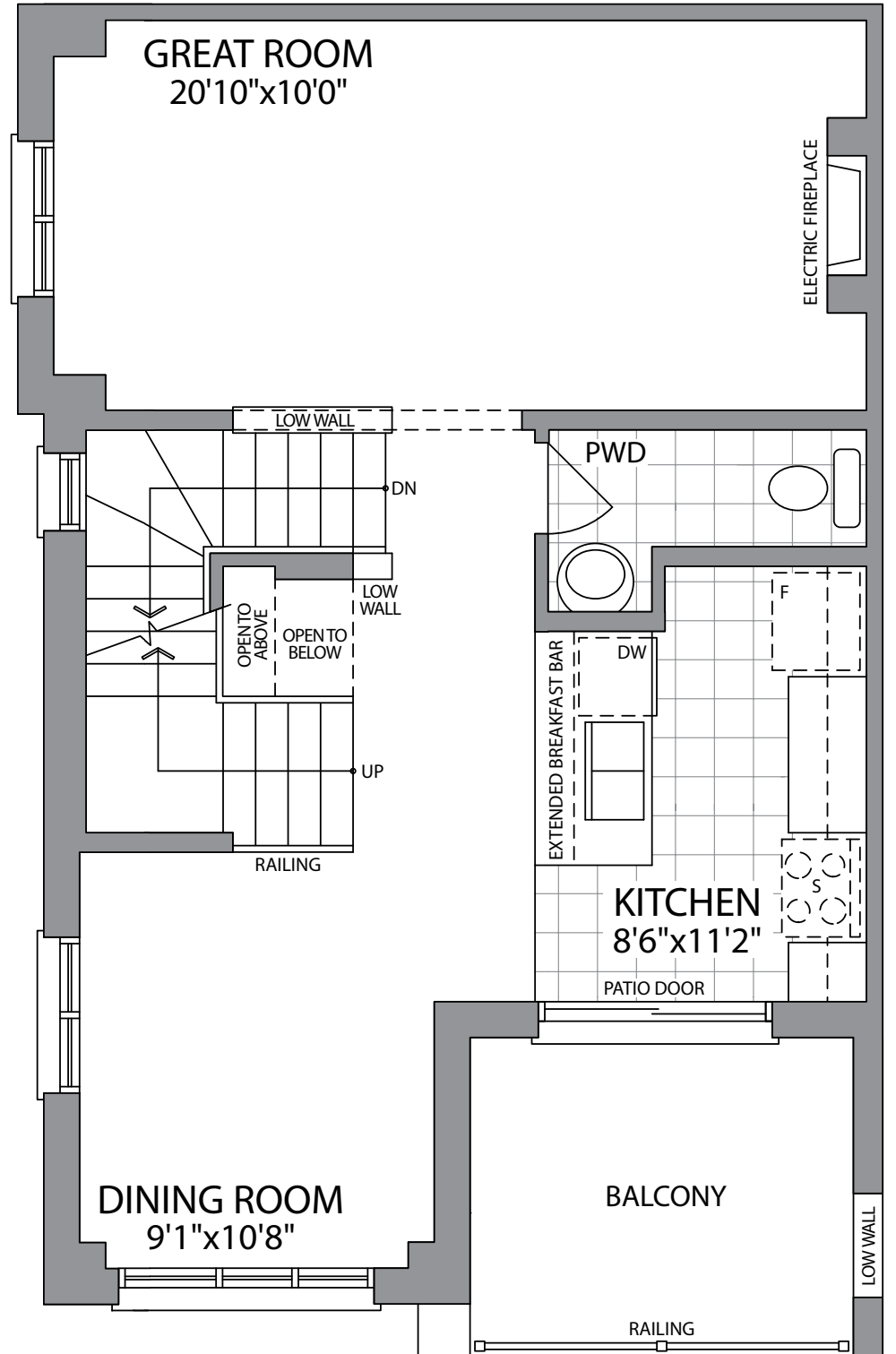
Artist's Concept

PARADISE  
DEVELOPMENTS®

# THE JACKSON-MOD 2 (BB3-MOD 2)

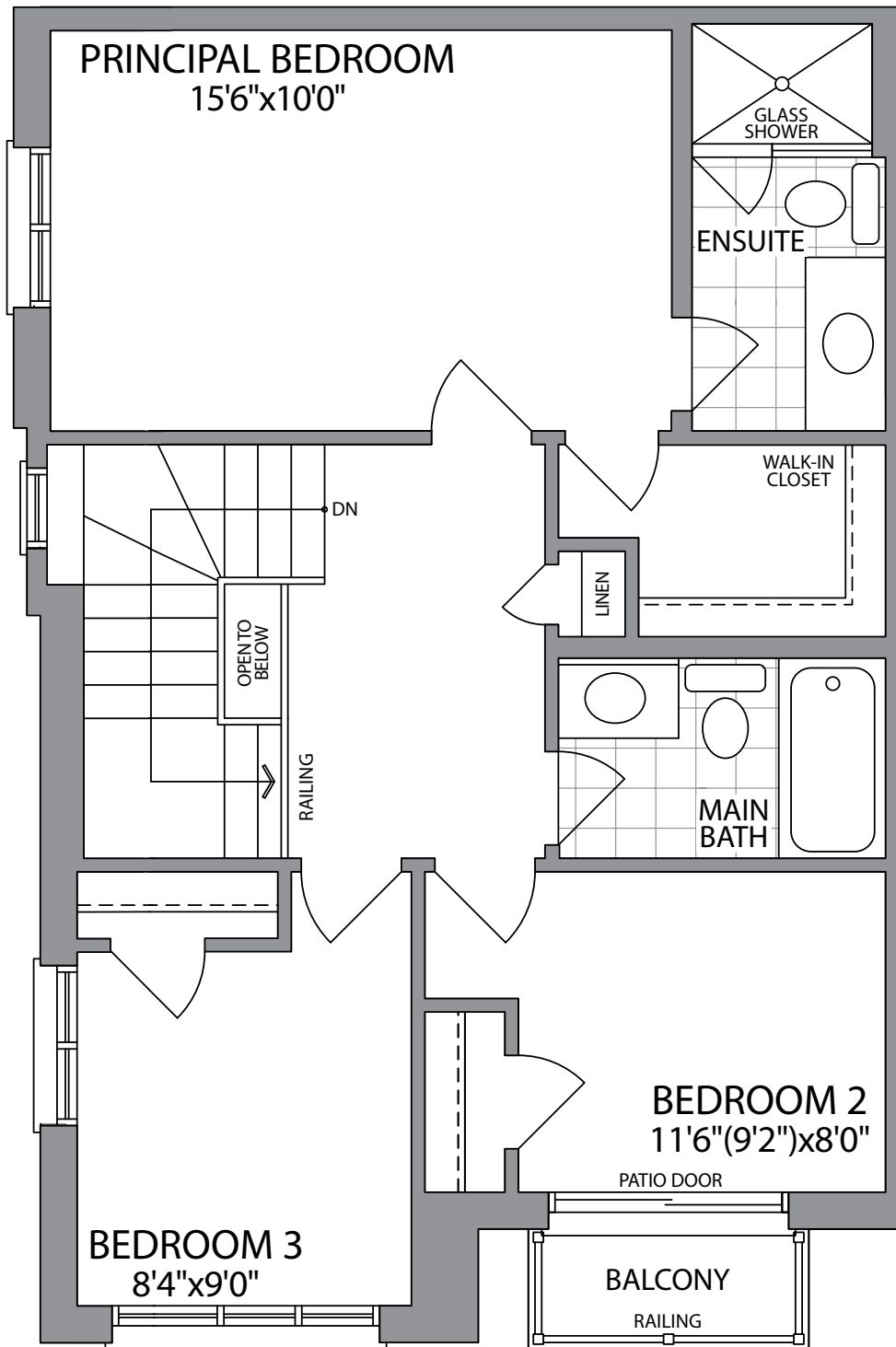


GROUND FLOOR  
ELEVATION 1C

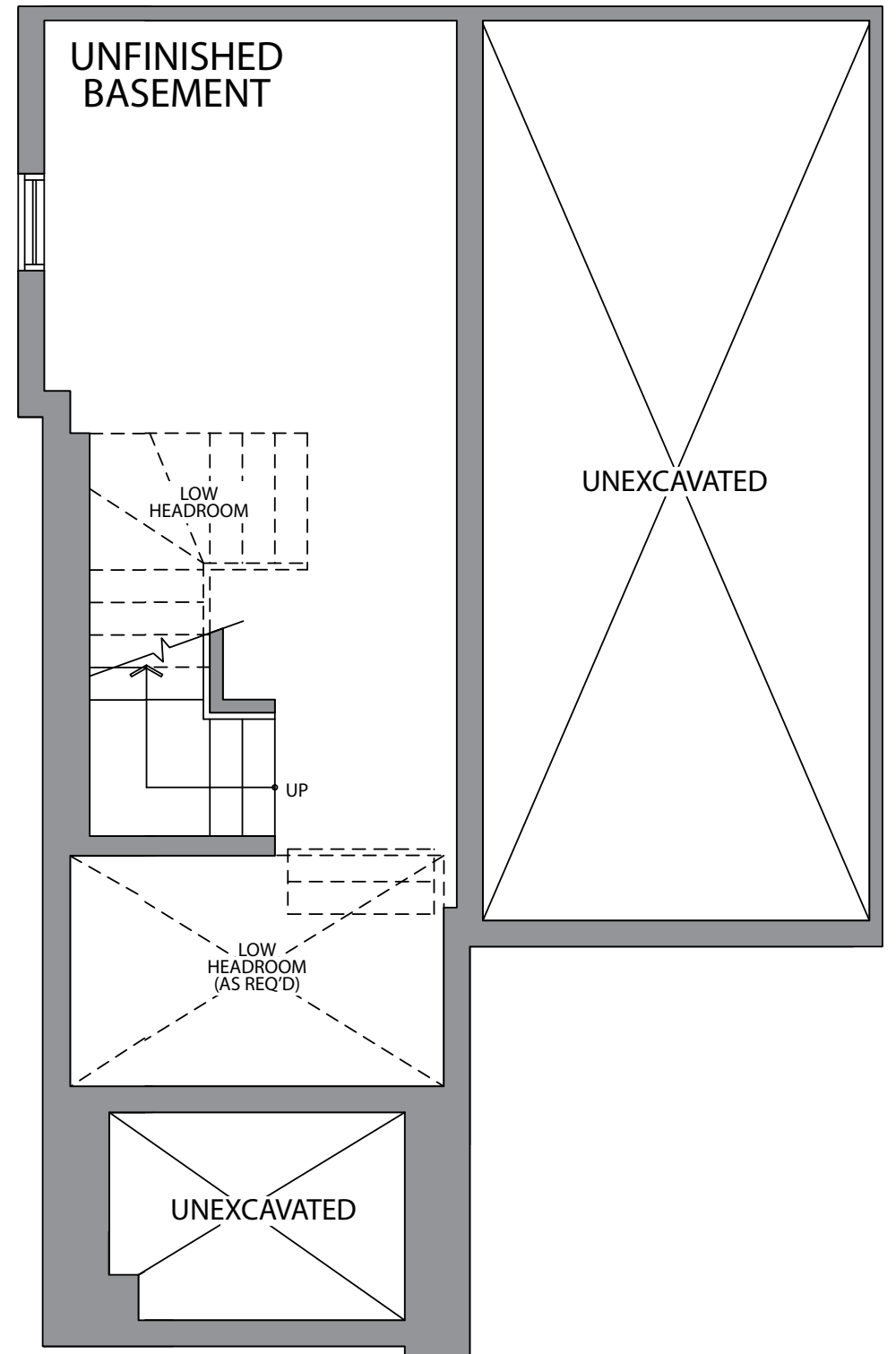


MAIN FLOOR  
ELEVATION 1C

1660 SQ.FT. UNIT 24



THIRD FLOOR  
ELEVATION 1C



BASEMENT  
ELEVATION 1C

URBAN  
TOWNS

# THE JACKSON-MOD 2 (BB3-MOD 2)





ELEVATION 2C  
1660 SQ.FT.  
UNIT 14 & 32

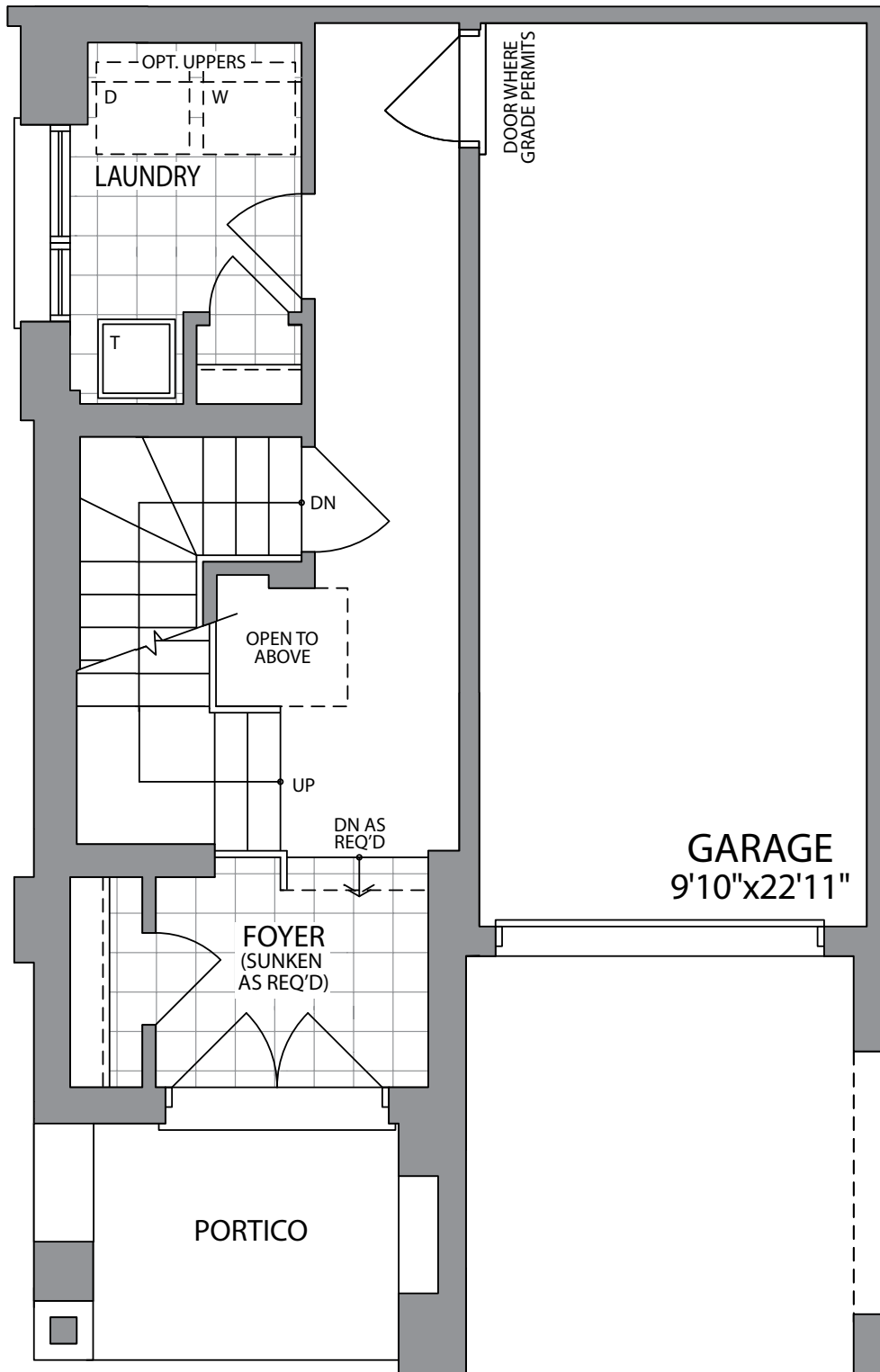
WHITBY MEADOWS  
newTOWNS



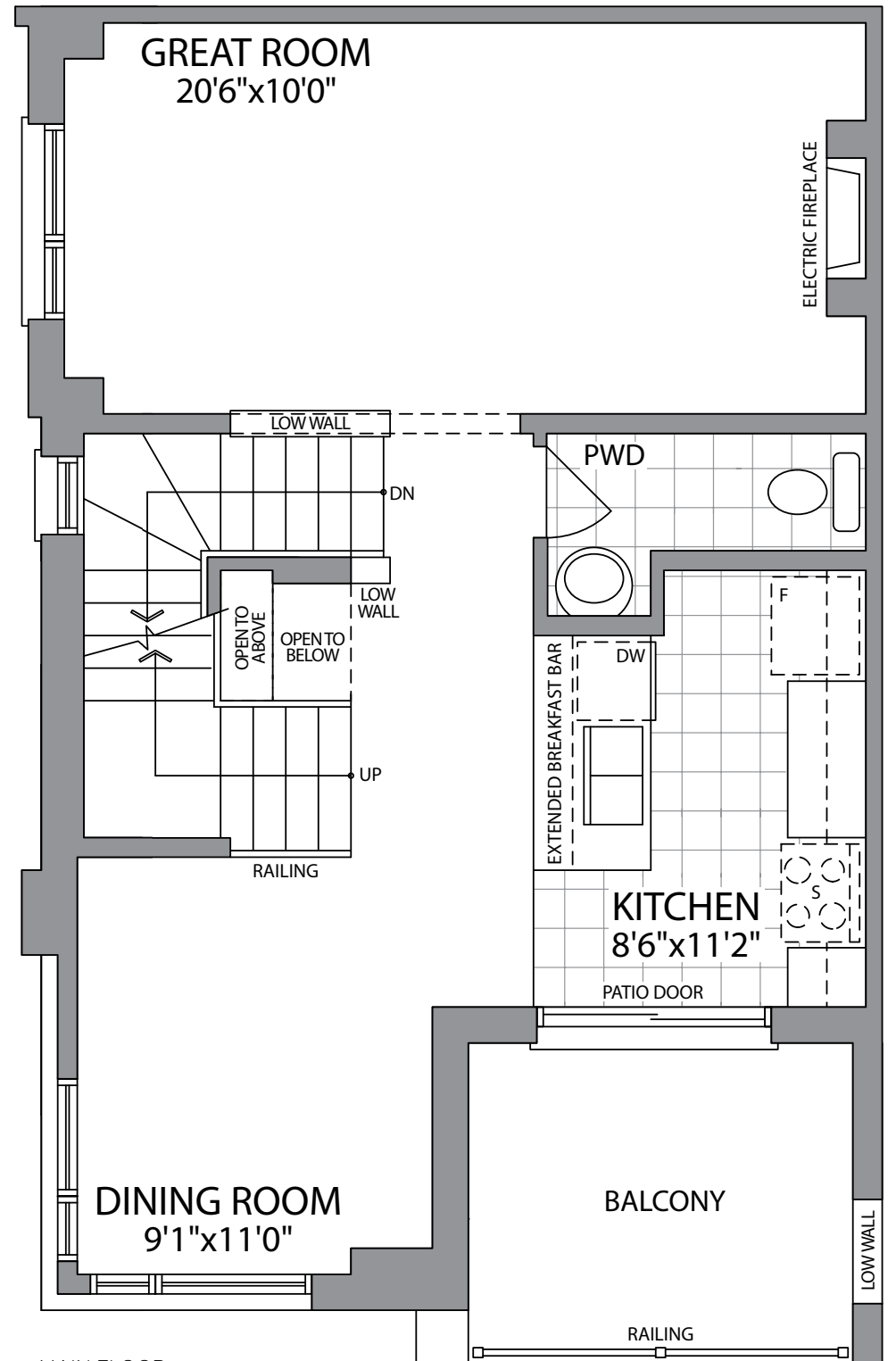
Artist's Concept

**PARADISE**  
DEVELOPMENTS®

# THE JACKSON-MOD 2 (BB3-MOD 2)

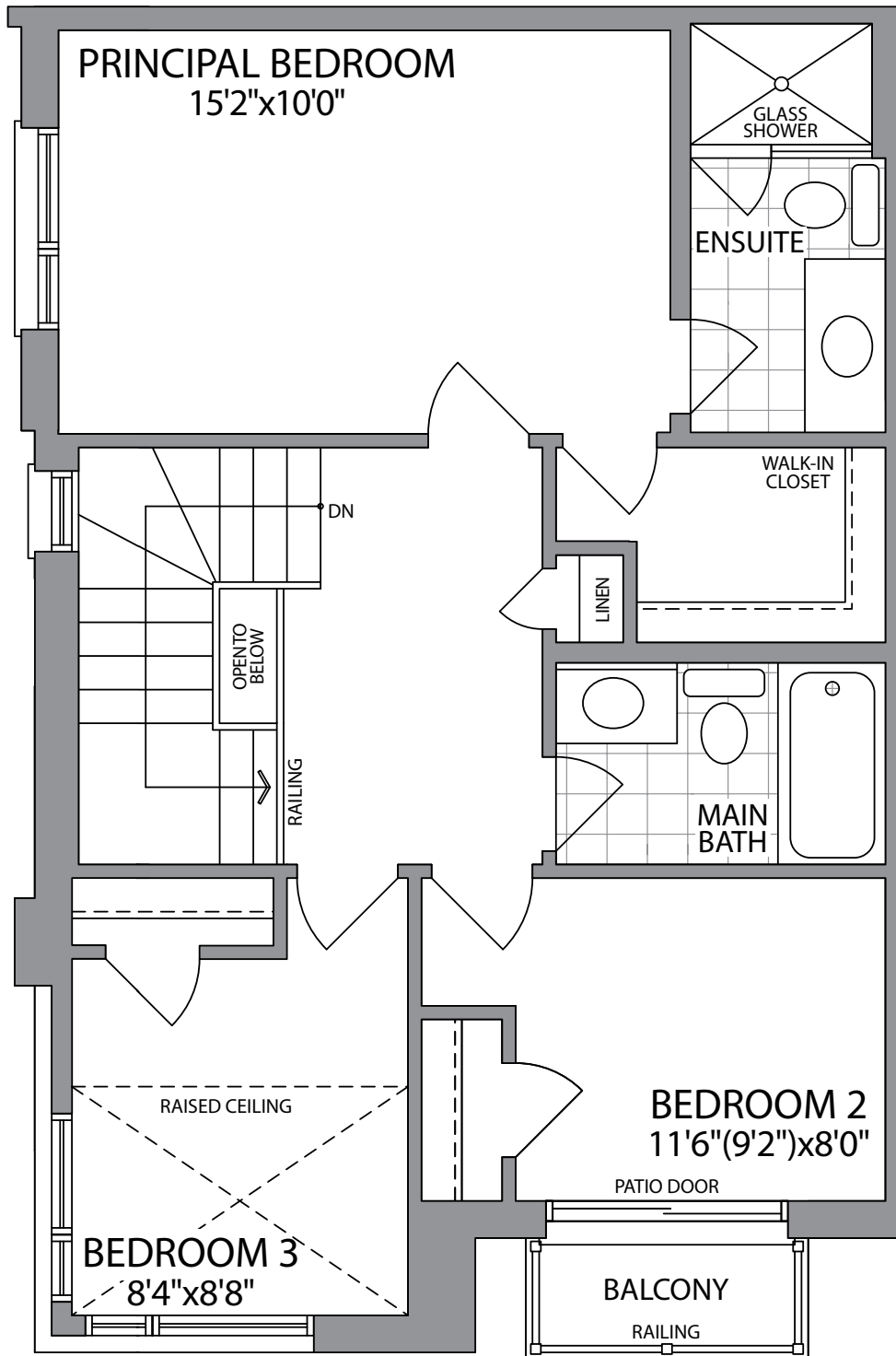


GROUND FLOOR  
ELEVATION 2C

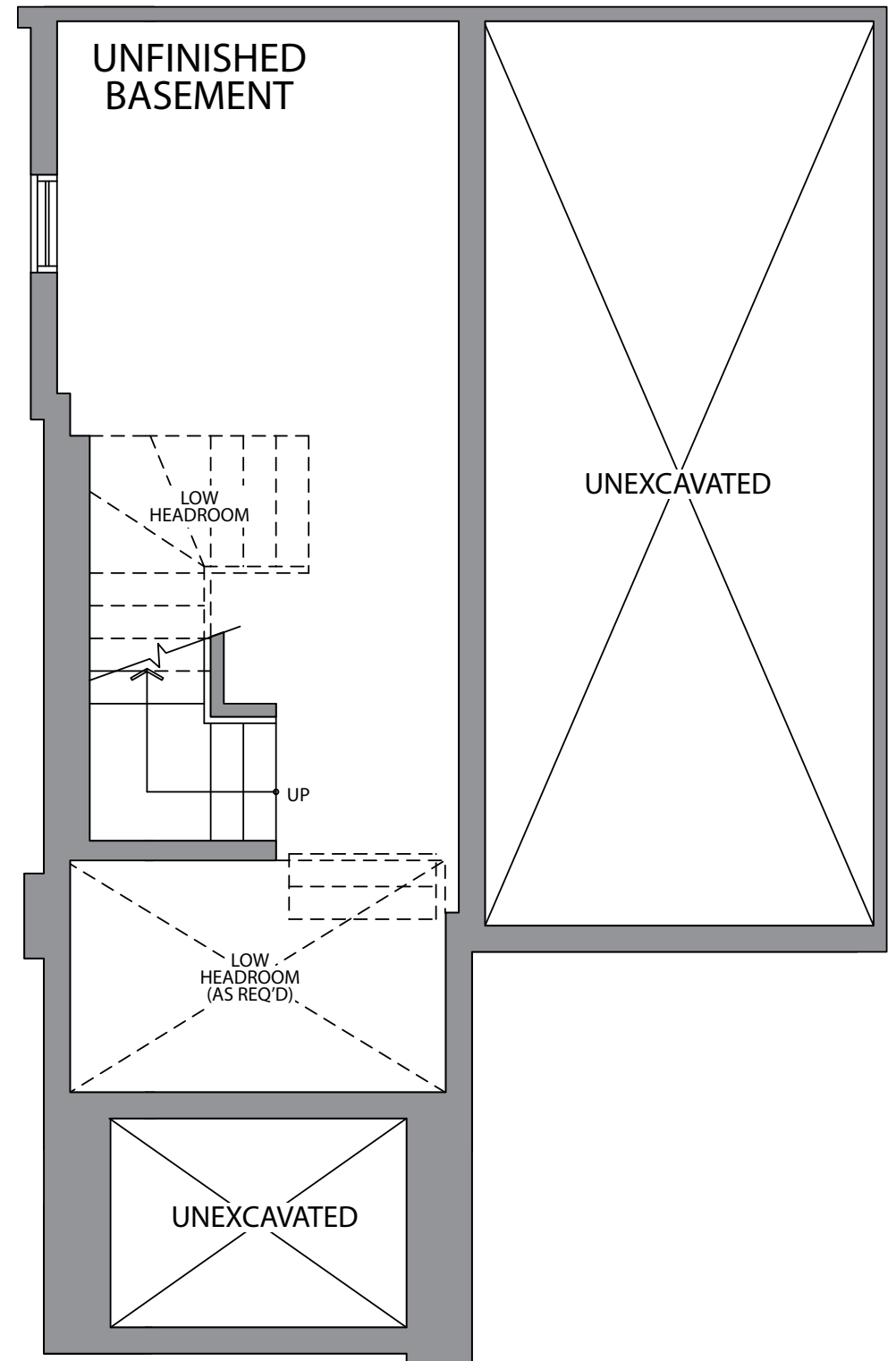


MAIN FLOOR  
ELEVATION 2C

1660 SQ.FT. UNIT 14 & 32



THIRD FLOOR  
ELEVATION 2C



BASEMENT  
ELEVATION 2C

URBAN  
TOWNS

# THE KOLBY (BB4)



ELEVATION 1C  
1700 SQ.FT.

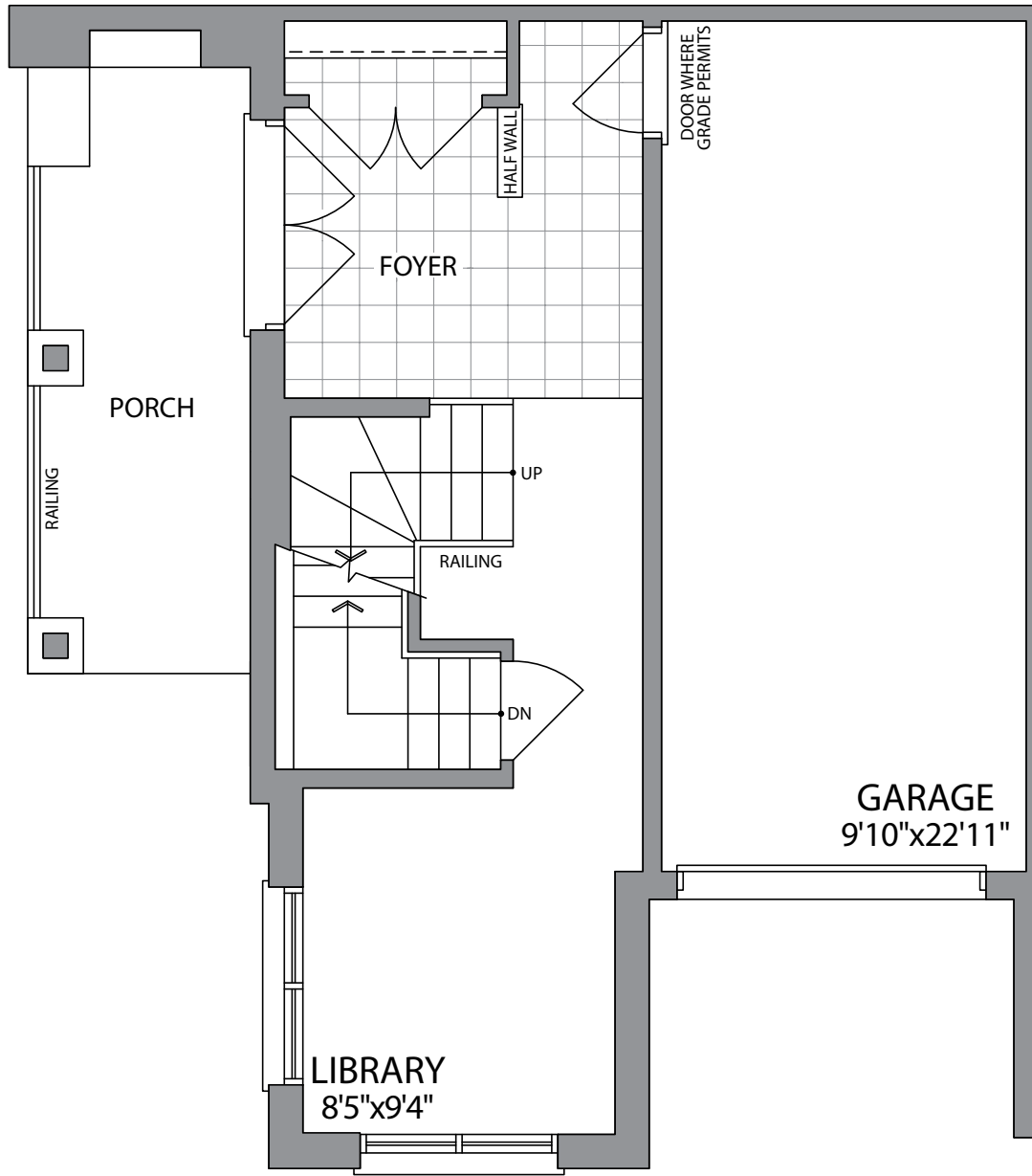
WHITBY MEADOWS  
newTOWNS



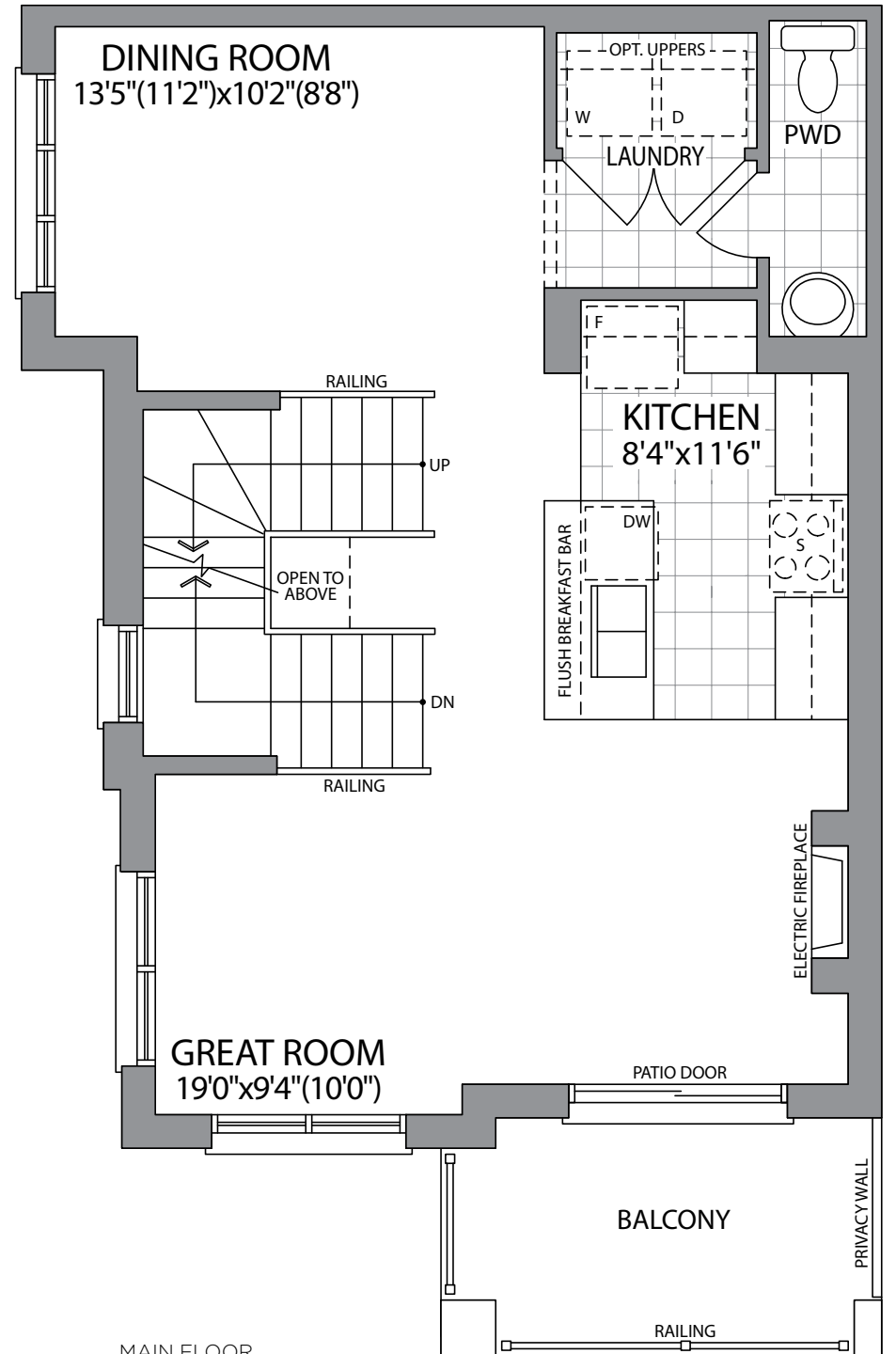
Artist's Concept

**PARADISE**  
DEVELOPMENTS®

# THE KOLBY (BB4)

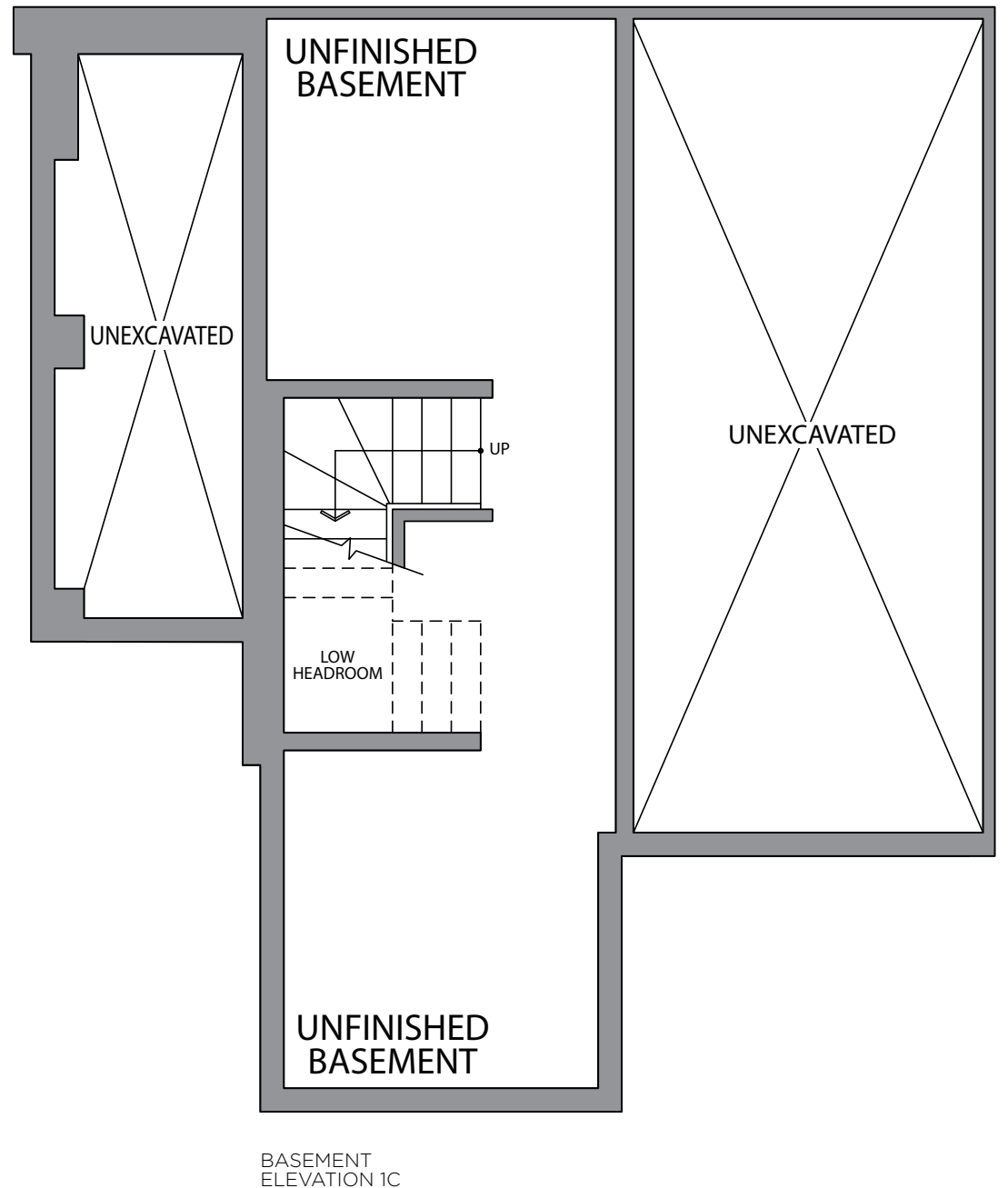
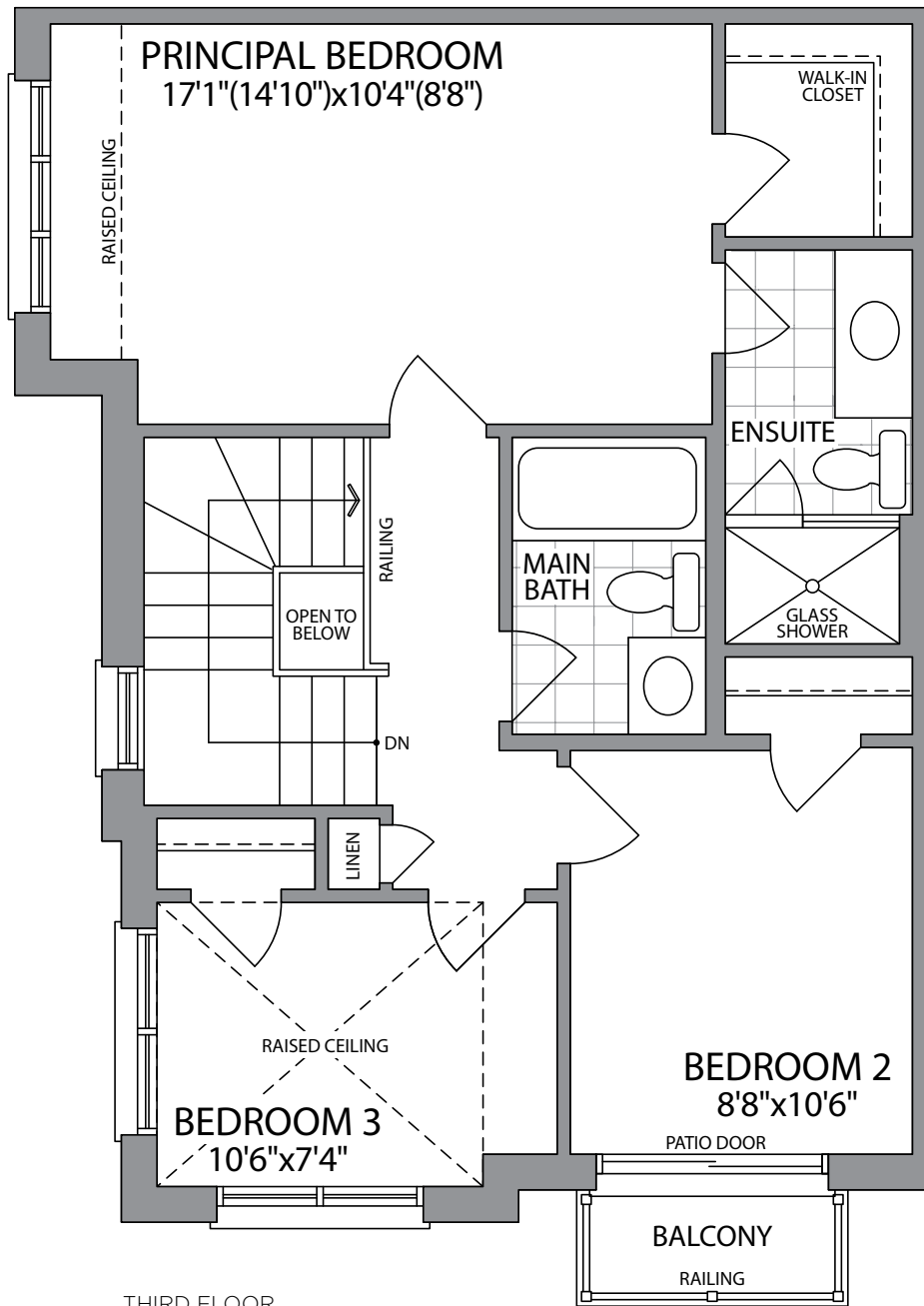


GROUND FLOOR  
ELEVATION 1C



MAIN FLOOR  
ELEVATION 1C

1700 SQ.FT.





COME HOME  
TO PARADISE.  
EVERYDAY.



We never forget that your home is the single most precious investment of your life. Each day we go to work inspired with a purpose to fulfill that commitment to you.

Since 1972, we have spent over 5 decades building homes and communities and have remained committed to our roots. Over 15,000 exquisitely built homes stand testimony to our passion and caring. These homes are filled with timeless design, thoughtful planning and unparalleled craftsmanship which anchors them with loving memories, heartwarming stories and unforgettable experiences.

Before we put nail to wood and pen to paper, extensive research, planning and knowhow goes into building every one of our homes and communities. While building homes, we do not overlook the big picture. Our master plan for each community carefully takes into account the location, a harmonious streetscape, and access to amenities, in addition to the nature and open space of the neighbourhood. Collaborating with topnotch architects, planners, designers and tradespeople, we meticulously put together every home with the dreams and aspirations of our homebuyers as our guide. Homebuilding gives us a profound sense of fulfillment as we strive every day to provide better environments, contribute to better schools, and support the communities with a sense of social consciousness – all with a level of integrity, respect and compassion for the world which we live in.

We are Paradise Developments.™

**PARADISE**  
DEVELOPMENTS®

