

WHITBY MEADOWS

new**TOWNS**

STREET  
TOWNS



A close-up photograph of a man and a woman smiling and embracing each other. The man is in the foreground, wearing a dark blue sweater, and the woman is behind him, wearing an orange top. They are both laughing and looking towards the right. The background is dark and out of focus.

# **PARADISE** **COMES** **TO WHITBY.**

Life is all about choices. Of all the things we choose in life, purchasing a new home is perhaps the single most important decision we'll ever make. That's why you'll appreciate the wide variety of homes that Paradise Developments is offering here at Whitby Meadows New Towns. As we add this collection of beautiful new townhomes to our proud legacy, we aim to create something larger - a thoughtfully planned community that you'll be proud to call home.

WHITBY MEADOWS  
**newTOWNS**



THE  
**BURROWS**(TH2)

THE  
**ANTARES**(TH1)

THE  
**ANTARES**(TH1)

THE  
**ANTARES**



S(TH1)

THE  
ANTARES(TH1)

THE  
ANTARES(TH1)

THE  
CESSNA(TH3)

Artist's Concept

ELEVATION 1

PARADISE  
DEVELOPMENTS®



THE  
BURROWS (TH2)



THE  
ANTARES (TH1)



THE  
ANTARES (TH1)



THE  
ANTARES(TH1)



THE  
ANTARES(TH1)



THE  
BURROWS(TH2)

Artist's Concept

ELEVATION 2

PARADISE  
DEVELOPMENTS®

STREET  
TOWNS

# THE ANTARES-MOD (TH1-MOD)





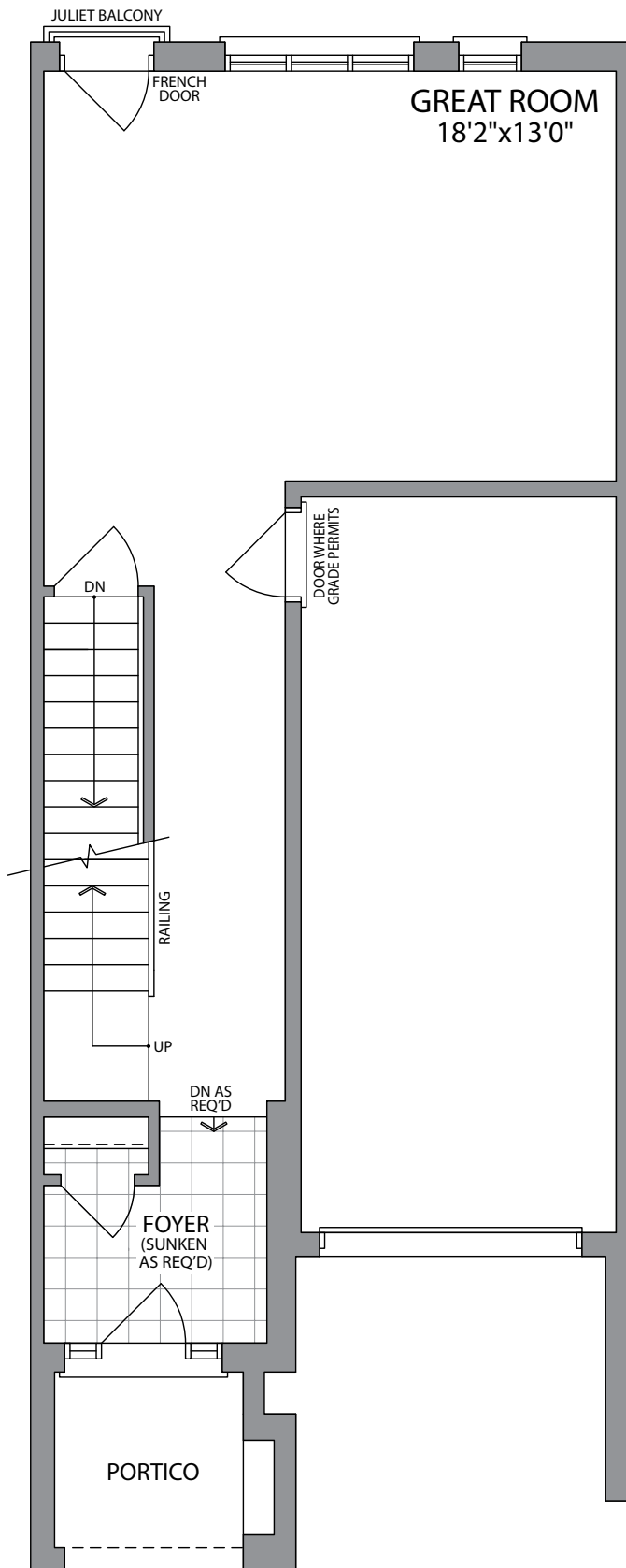
ELEVATION 1  
2300 SQ.FT.  
UNIT 12

WHITBY MEADOWS  
newTOWNS

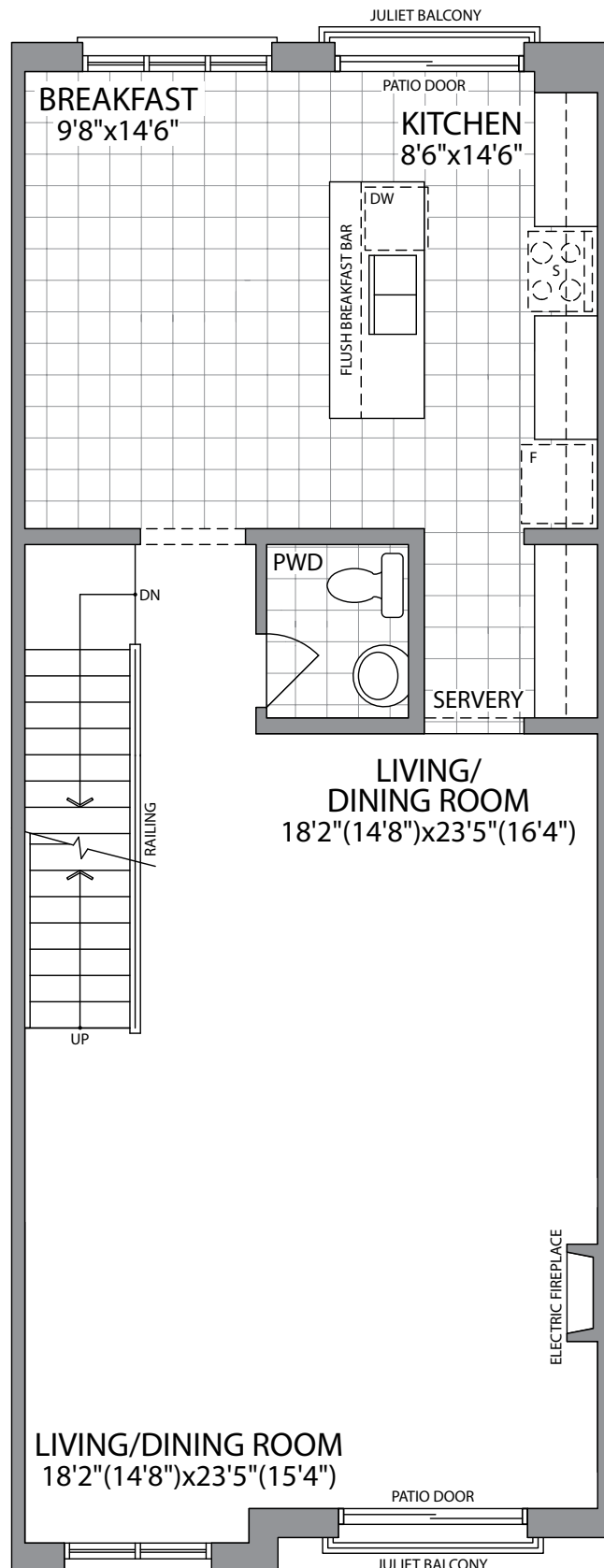


Artist's Concept

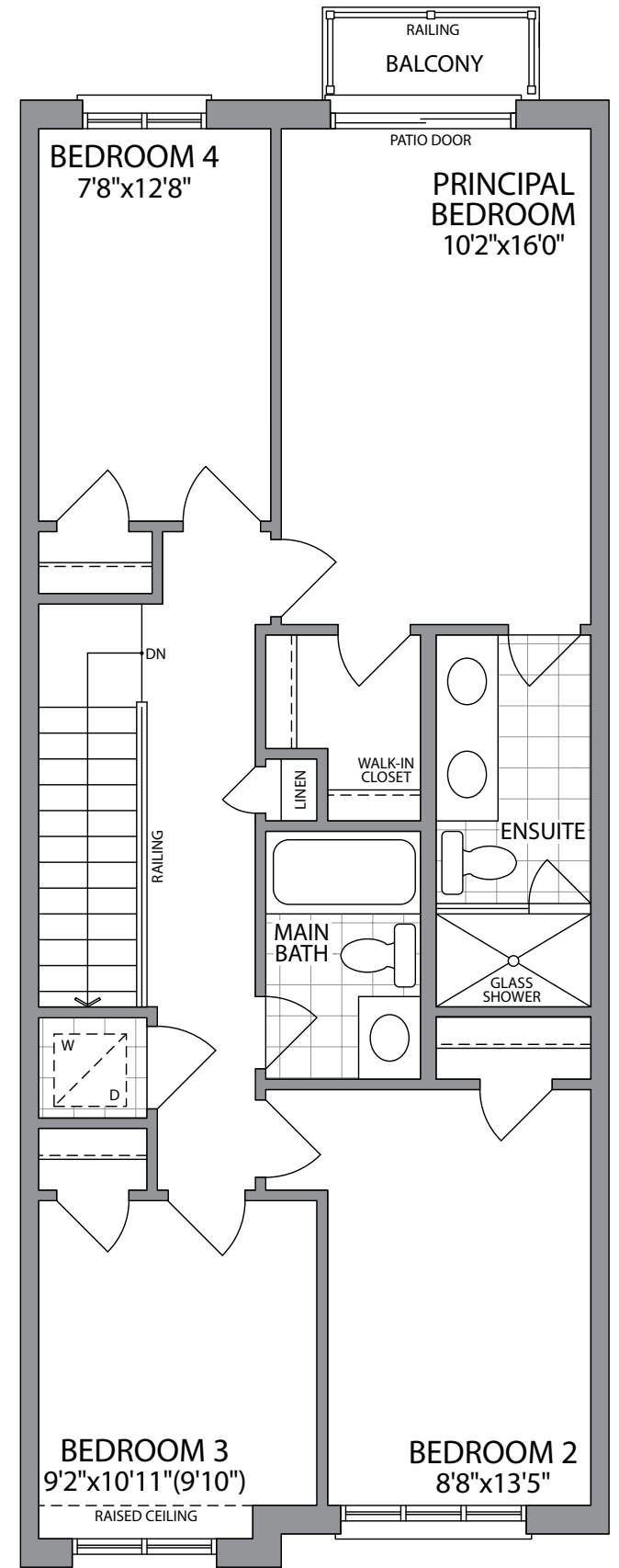
PARADISE  
DEVELOPMENTS®



GROUND FLOOR  
ELEVATION 1

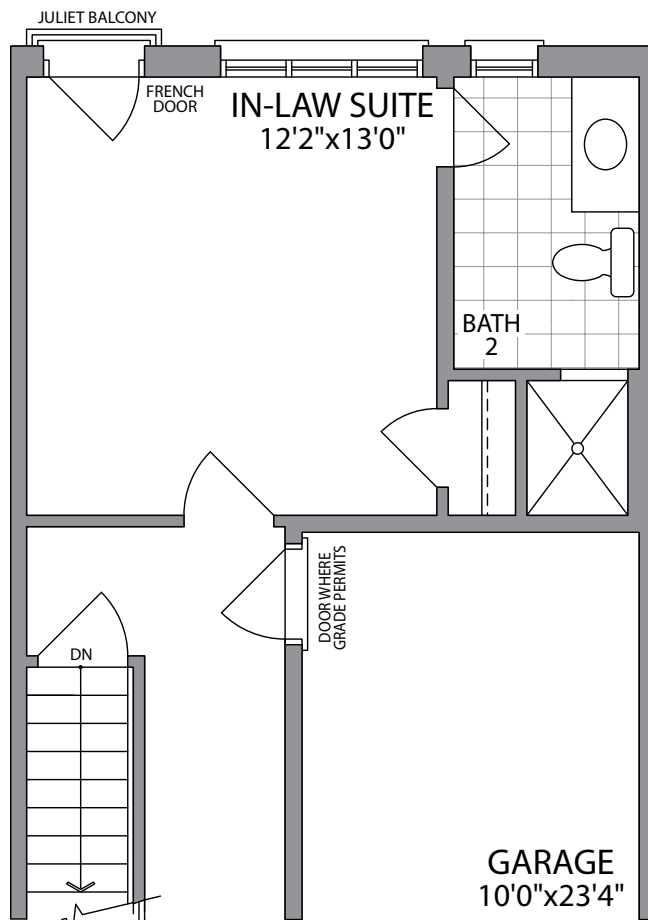


MAIN FLOOR  
ELEVATION 1

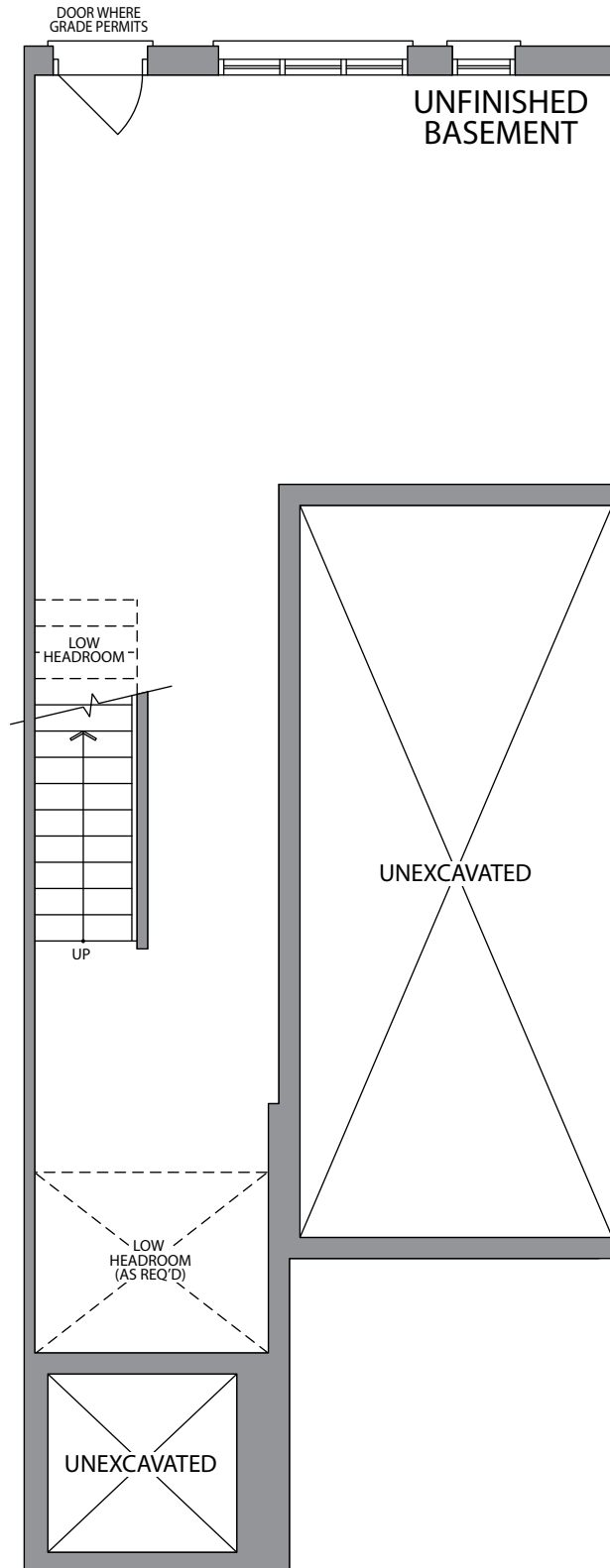


THIRD FLOOR  
ELEVATION 1

# 2300 SQ.FT. UNIT 12



OPT. GROUND FLOOR  
W/IN-LAW SUITE  
ELEVATION 1



BASEMENT  
ELEVATION 1

STREET  
TOWNS

# THE ANTARES (TH1)

ELEVATION 1  
2310 SQ.FT.



Artist's Concept

ELEVATION 2  
2310 SQ.FT.

WHITBY MEADOWS  
newTOWns



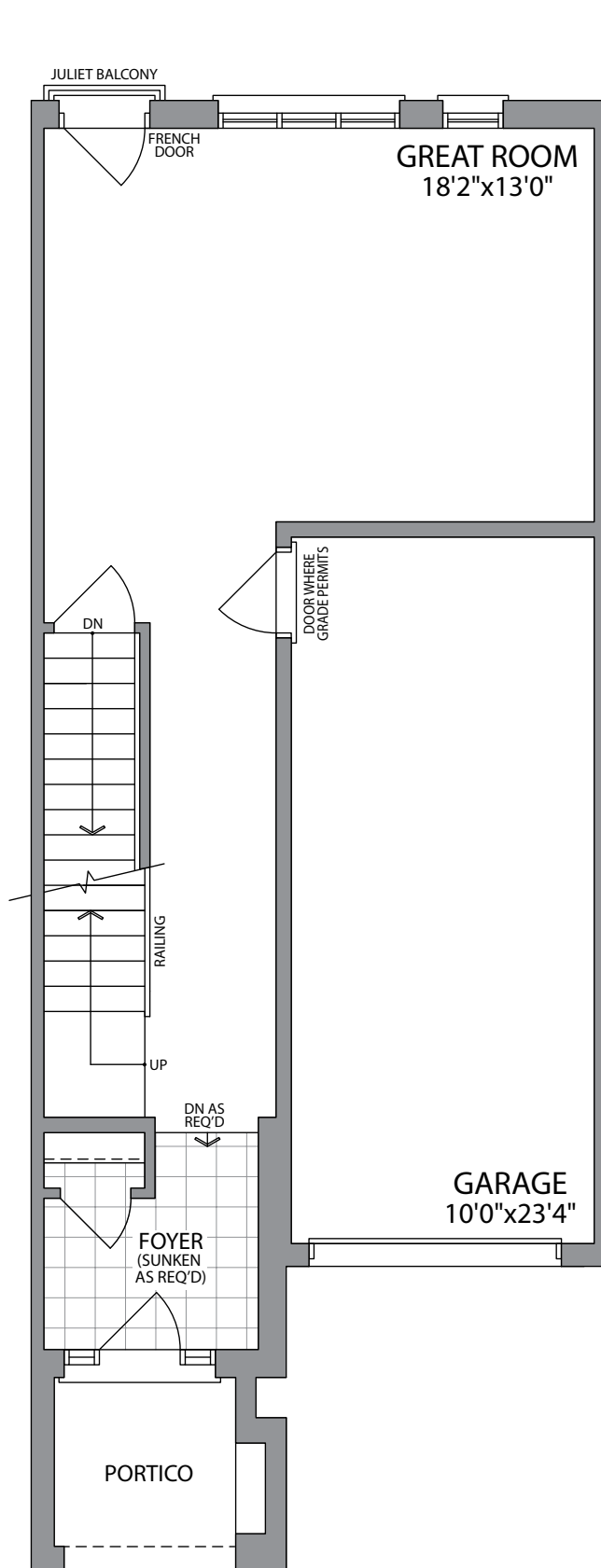
Artist's Concept

**PARADISE**  
DEVELOPMENTS®

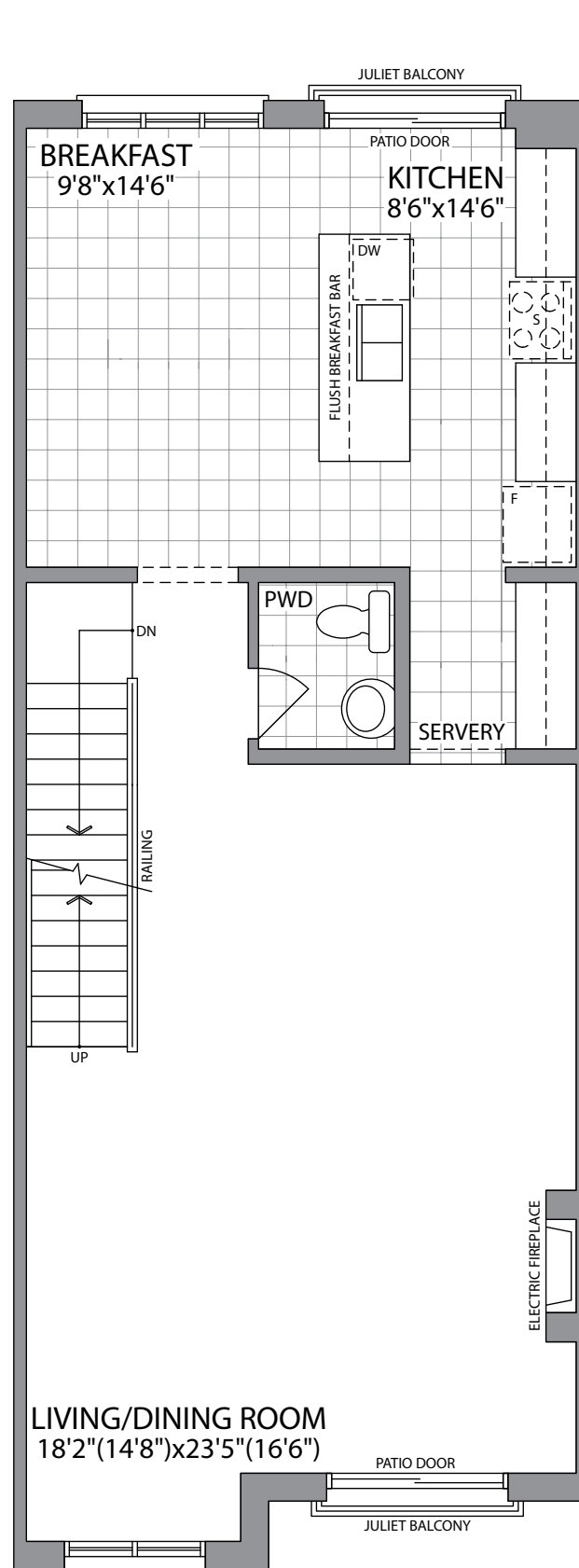
STREET TOWNS

ELEVATION 1 & 2

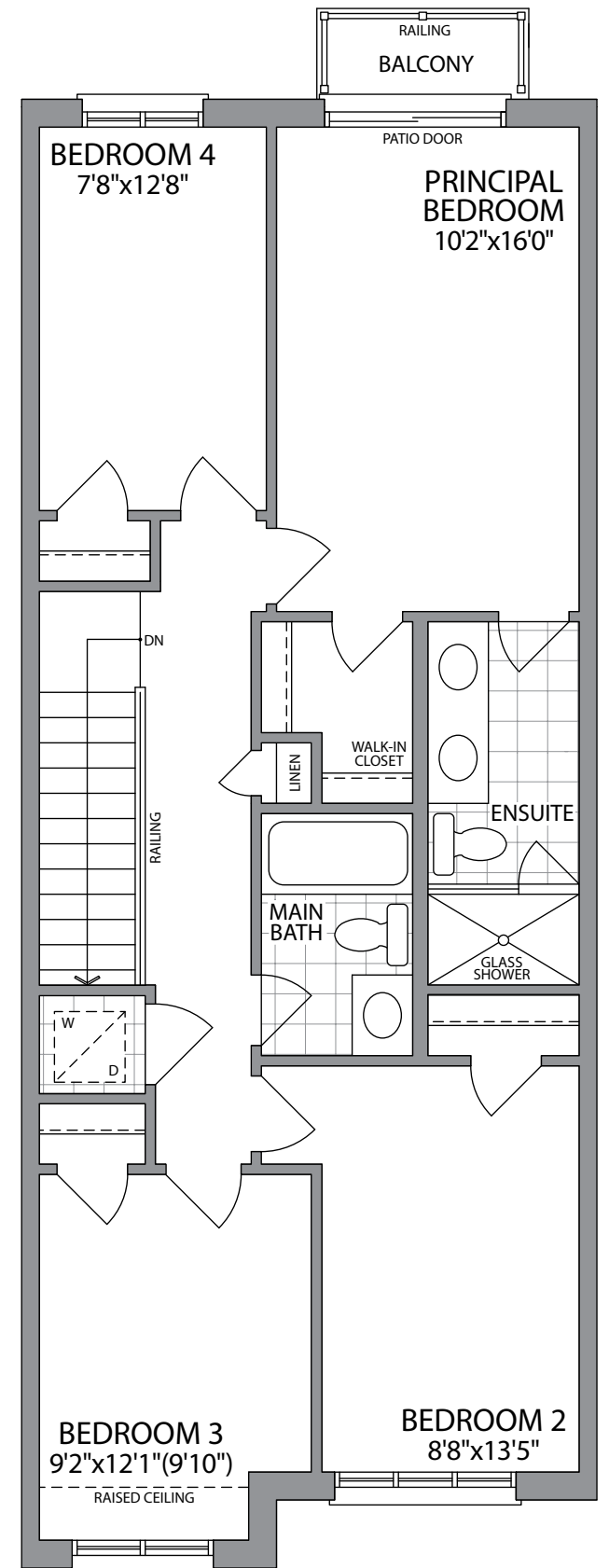
# THE ANTARES (TH1)



GROUND FLOOR  
ELEVATION 1

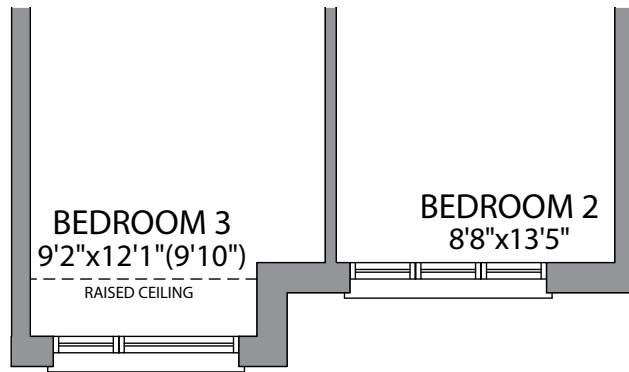


MAIN FLOOR  
ELEVATION 1

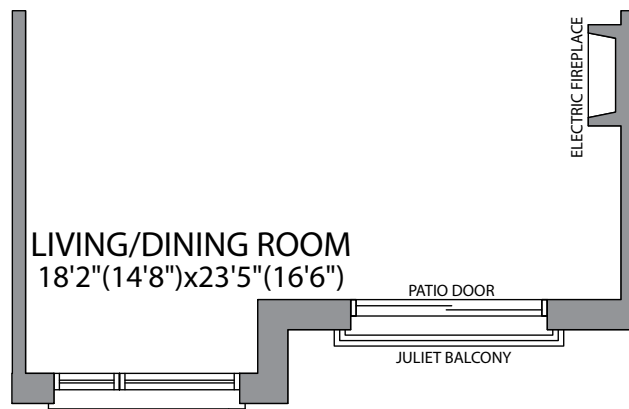


THIRD FLOOR  
ELEVATION 1

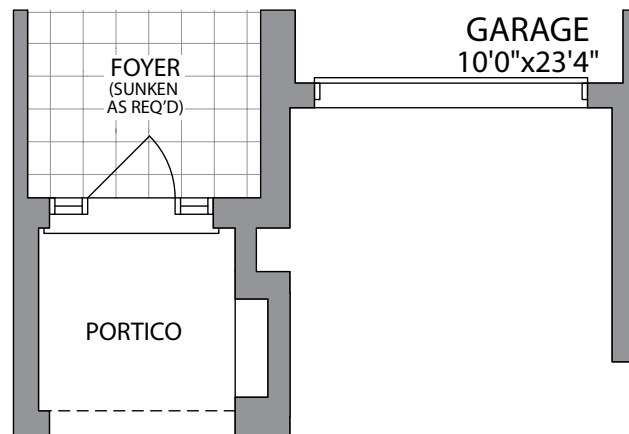
# 2310 SQ.FT.



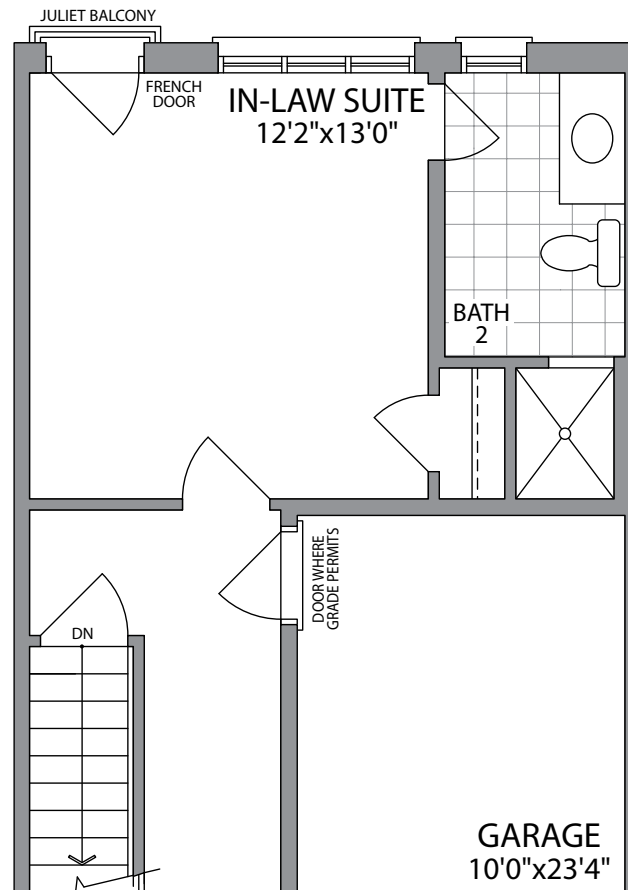
THIRD FLOOR  
ELEVATION 2



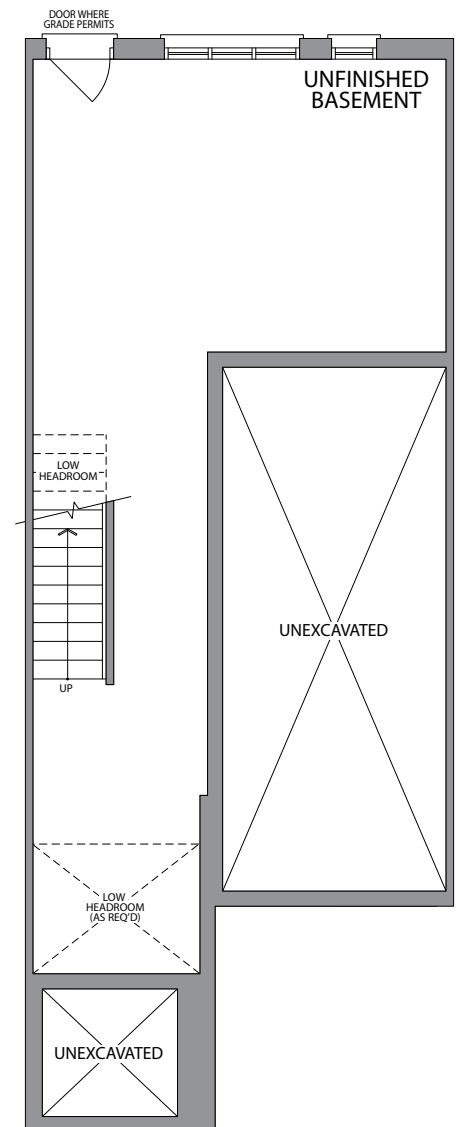
MAIN FLOOR  
ELEVATION 2



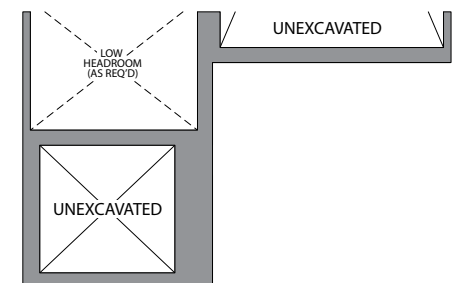
GROUND FLOOR  
ELEVATION 2



OPT. GROUND FLOOR  
W/IN-LAW SUITE  
ELEVATION 1 & 2



BASEMENT  
ELEVATION 1



BASEMENT  
ELEVATION 2

STREET  
TOWNS

# THE BURROWS-MOD (TH2-MOD)





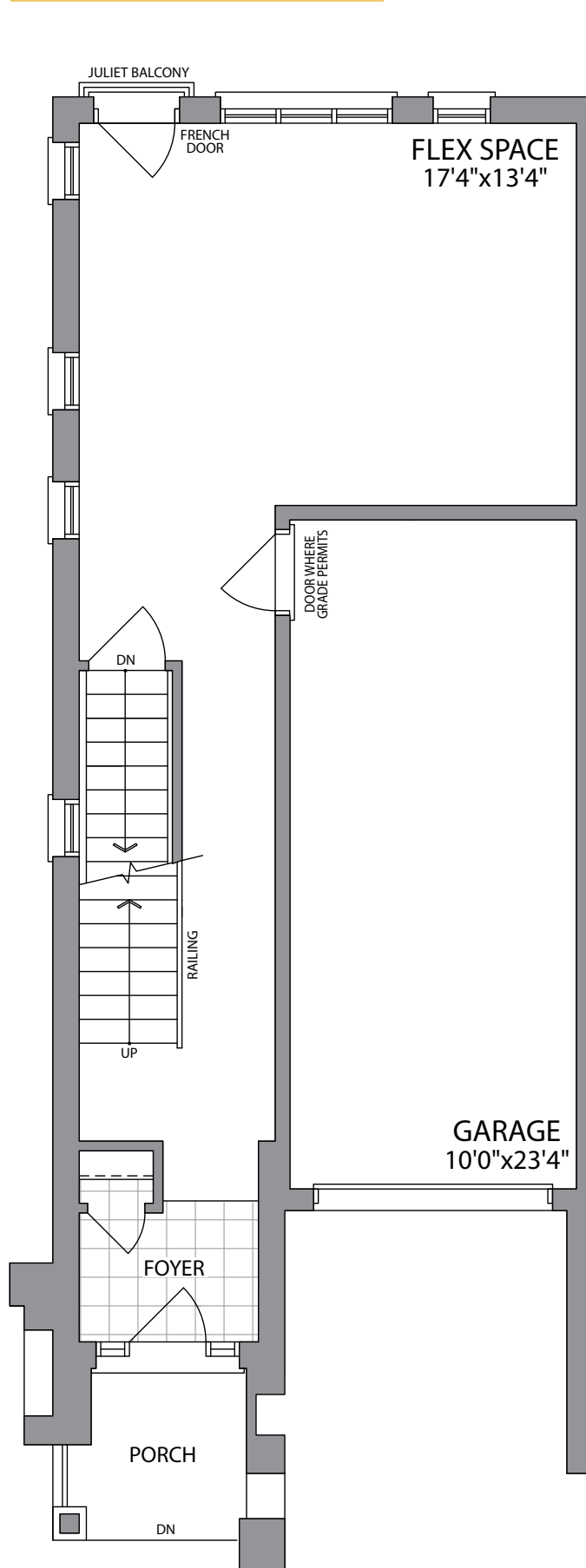
ELEVATION 2C  
2300 SQ.FT.  
UNIT 1

WHITBY MEADOWS  
newTOWNS

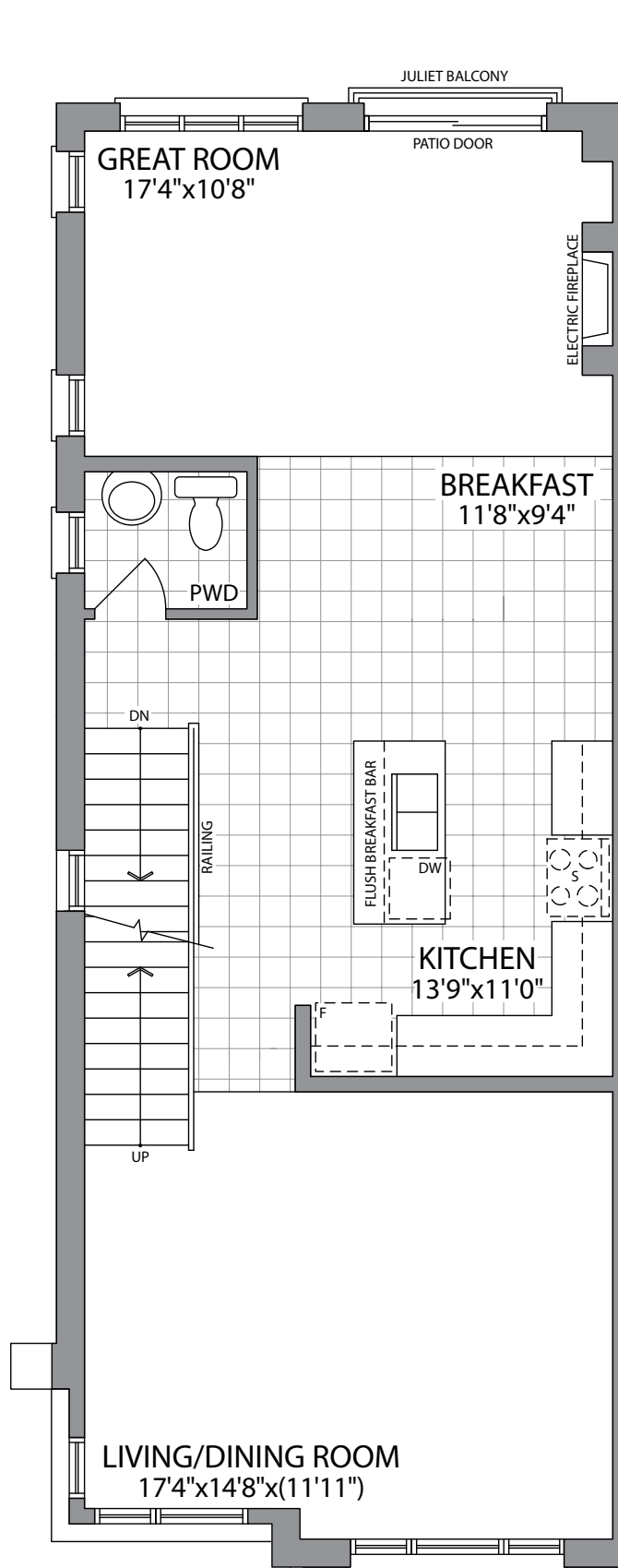


Artist's Concept

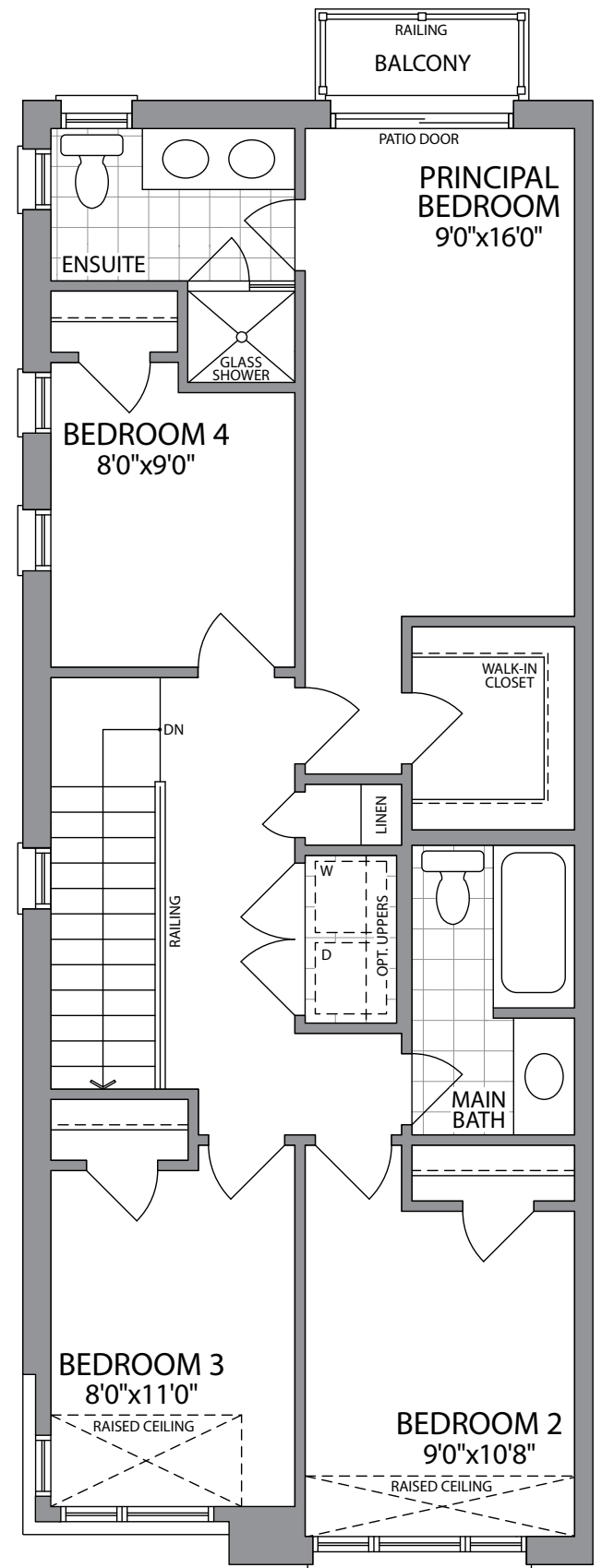
PARADISE  
DEVELOPMENTS®



GROUND FLOOR  
ELEVATION 2C

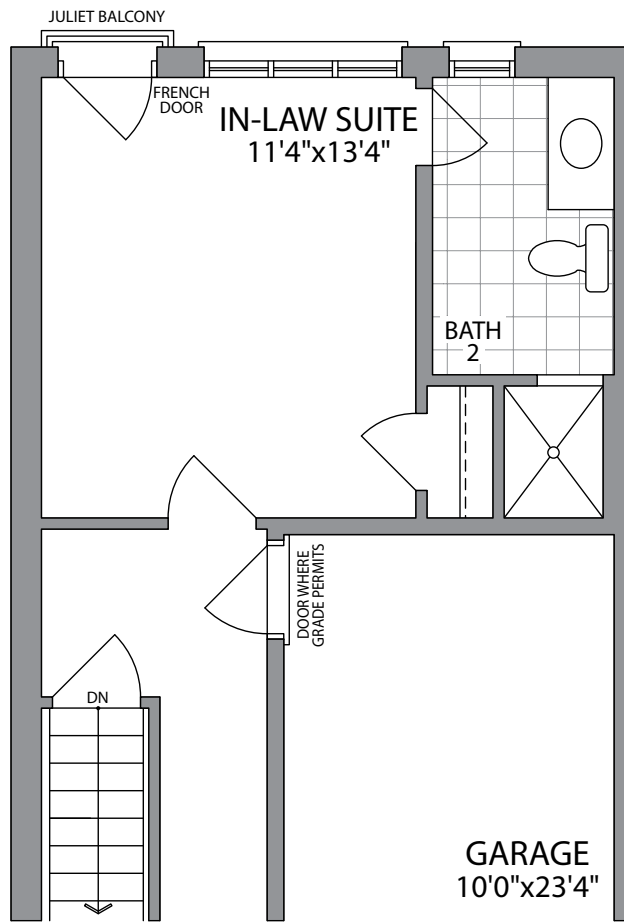


MAIN FLOOR  
ELEVATION 2C

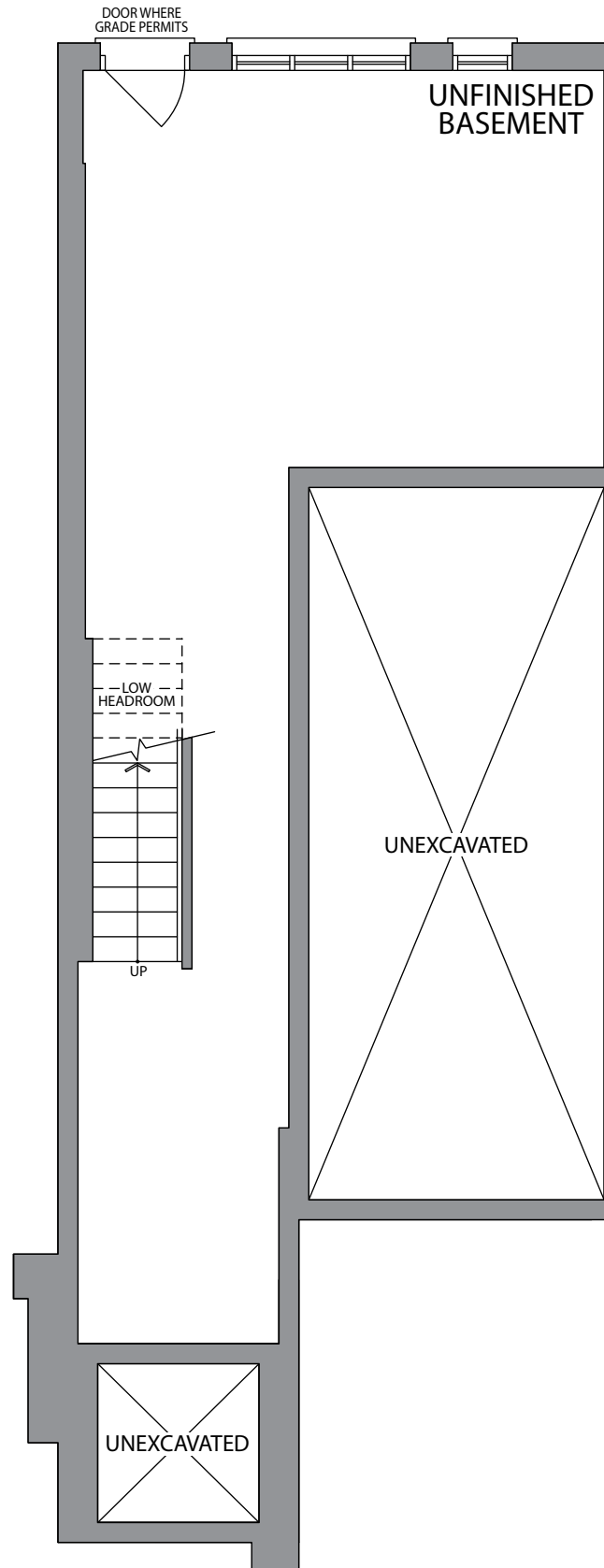


THIRD FLOOR  
ELEVATION 2C

# 2300 SQ.FT. UNIT 1



OPT. GROUND FLOOR  
W/IN-LAW SUITE  
ELEVATION 2C



BASEMENT  
ELEVATION 2C

STREET  
TOWNS

# THE BURROWS (TH2)

ELEVATION 1C  
2315 SQ.FT.



Artist's Concept

ELEVATION 2C  
2315 SQ.FT.

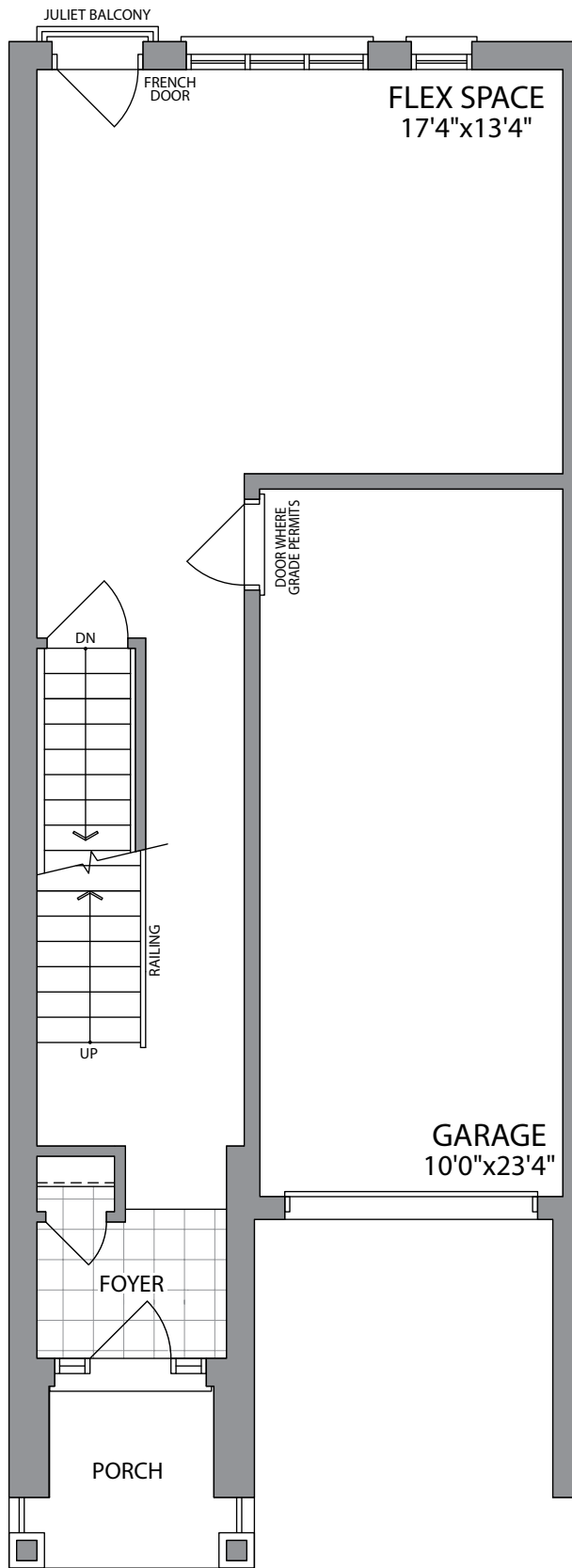
WHITBY MEADOWS  
newTOWNS



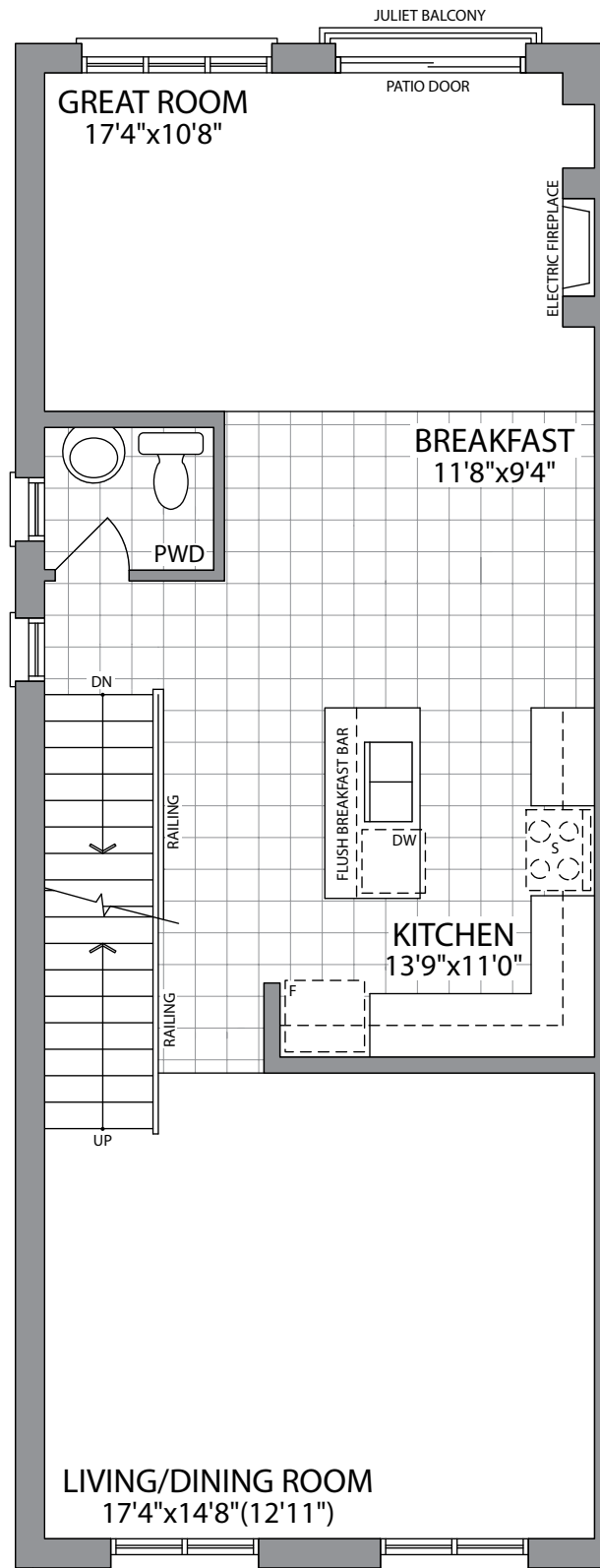
Artist's Concept

**PARADISE**  
DEVELOPMENTS®

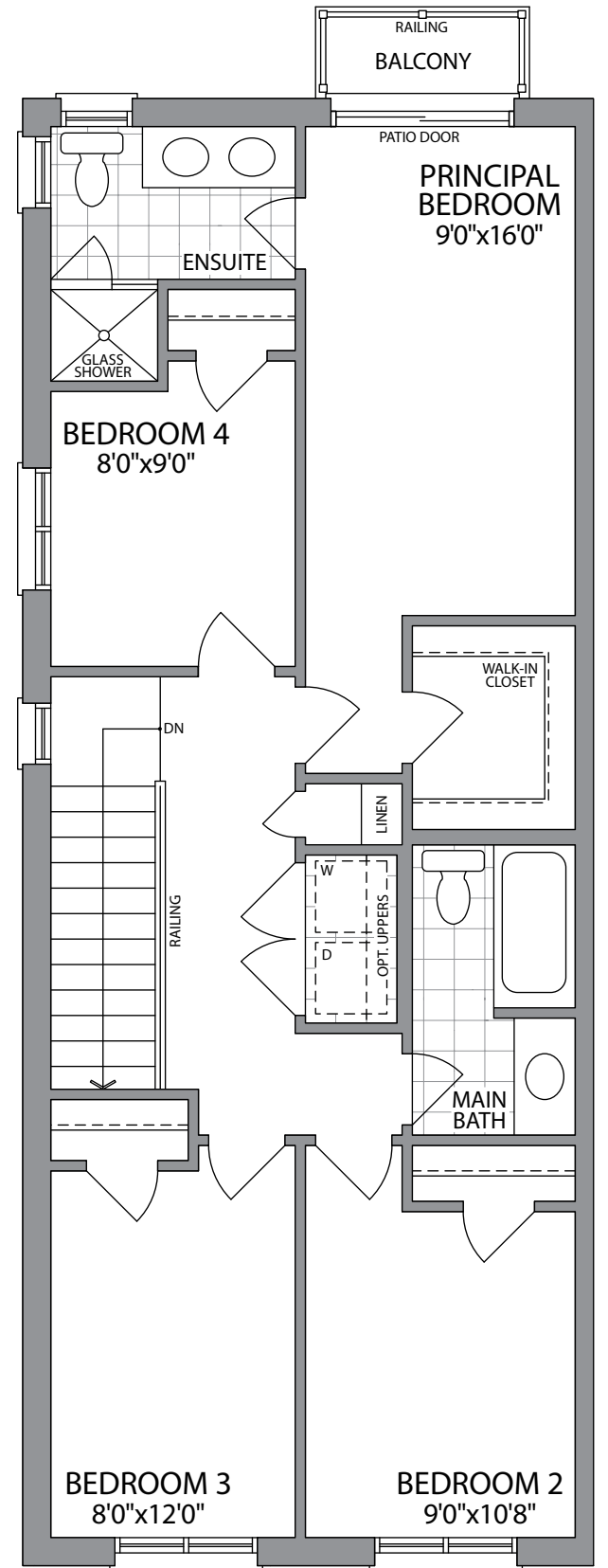
# THE BURROWS (TH2)



GROUND FLOOR  
ELEVATION 1C

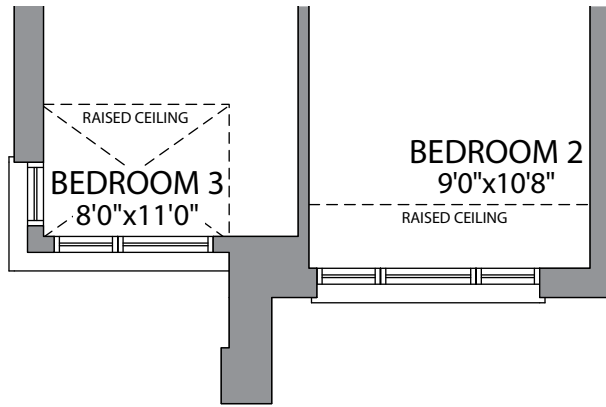


MAIN FLOOR  
ELEVATION 1C

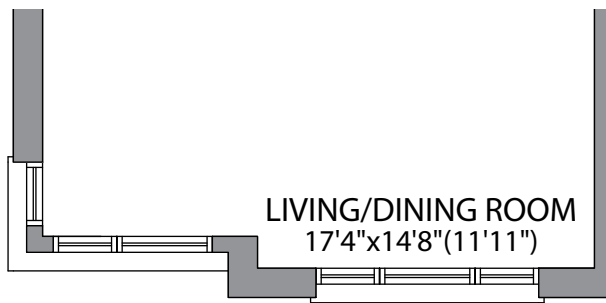


THIRD FLOOR  
ELEVATION 1C

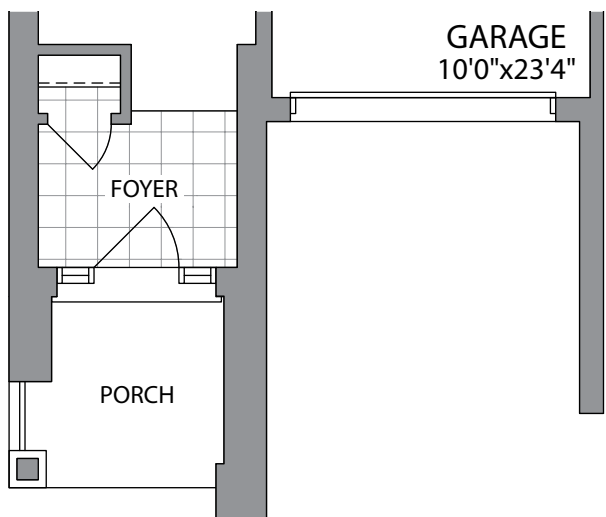
# 2315 SQ.FT.



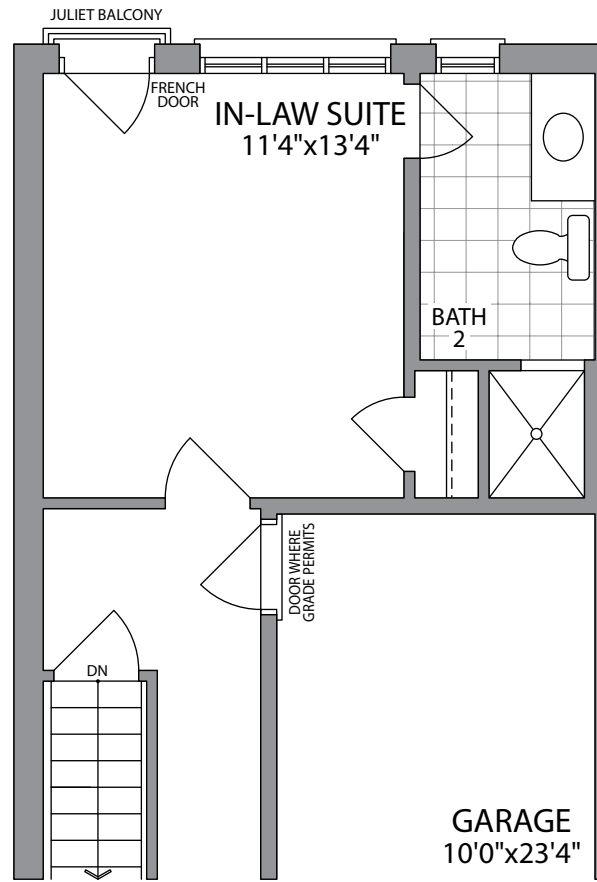
THIRD FLOOR  
ELEVATION 2C



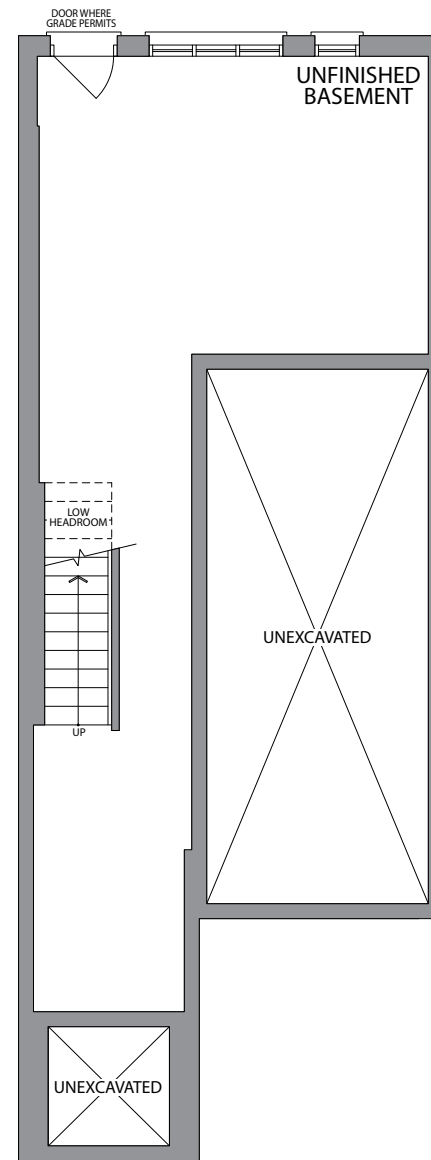
MAIN FLOOR  
ELEVATION 2C



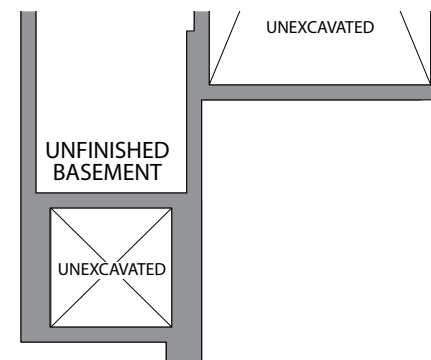
GROUND FLOOR  
ELEVATION 2C



OPT. GROUND FLOOR  
W/IN-LAW SUITE  
ELEVATION 1C & 2C



BASEMENT  
ELEVATION 1C



BASEMENT  
ELEVATION 2C

STREET  
TOWNS

# THE CESSNA (TH3)





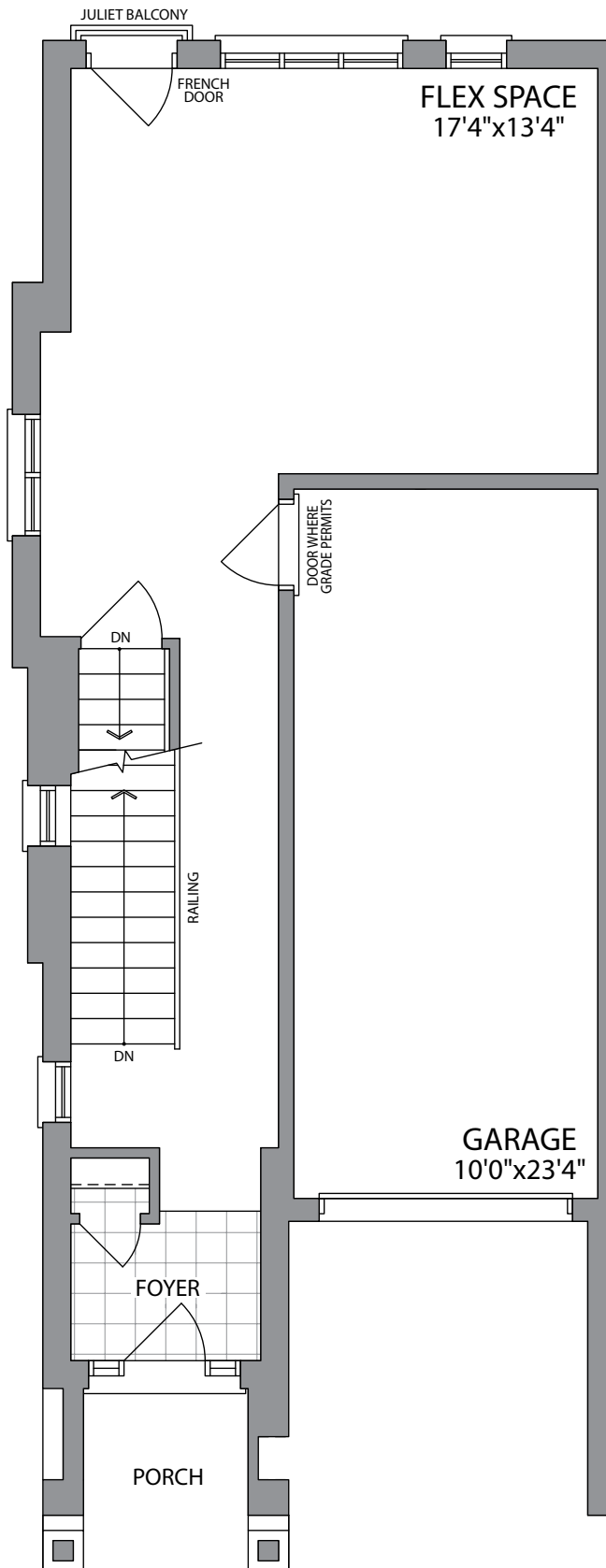
ELEVATION 1C  
2390 SQ.FT.  
UNIT 13

WHITBY MEADOWS  
newTOWns

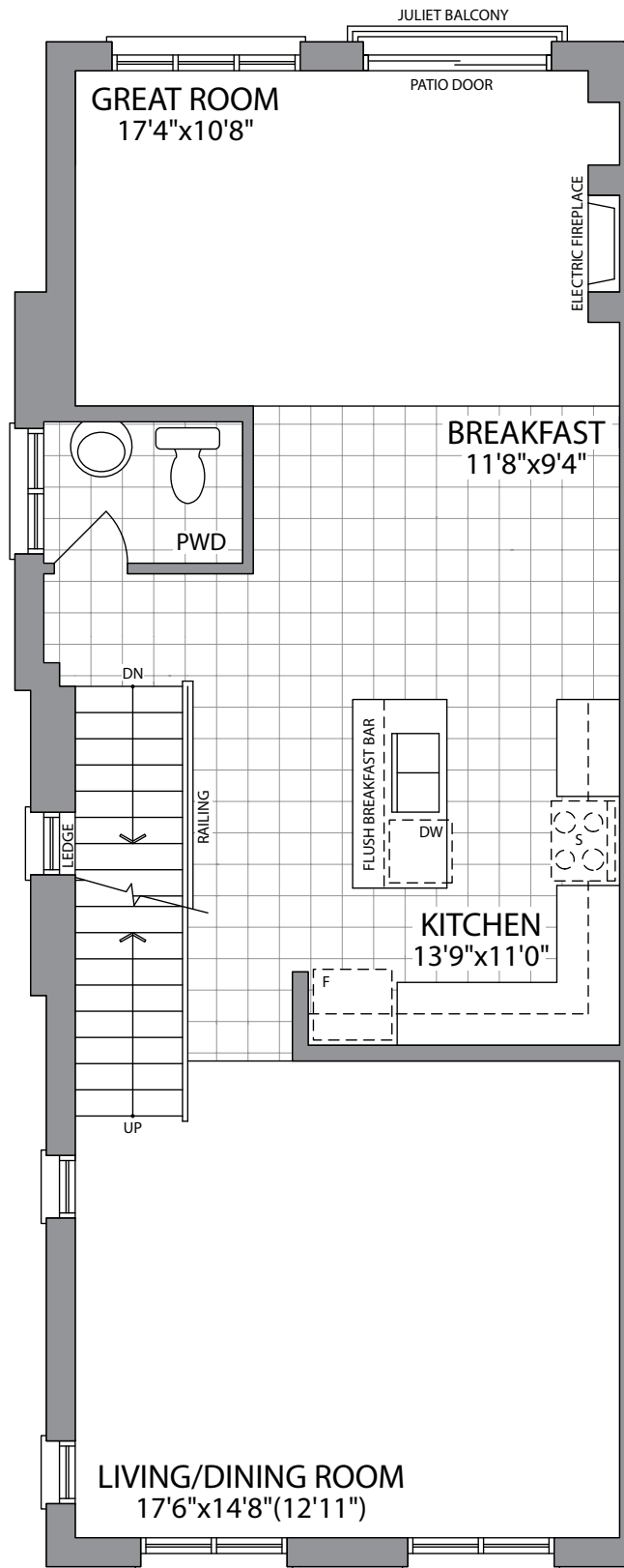


Artist's Concept

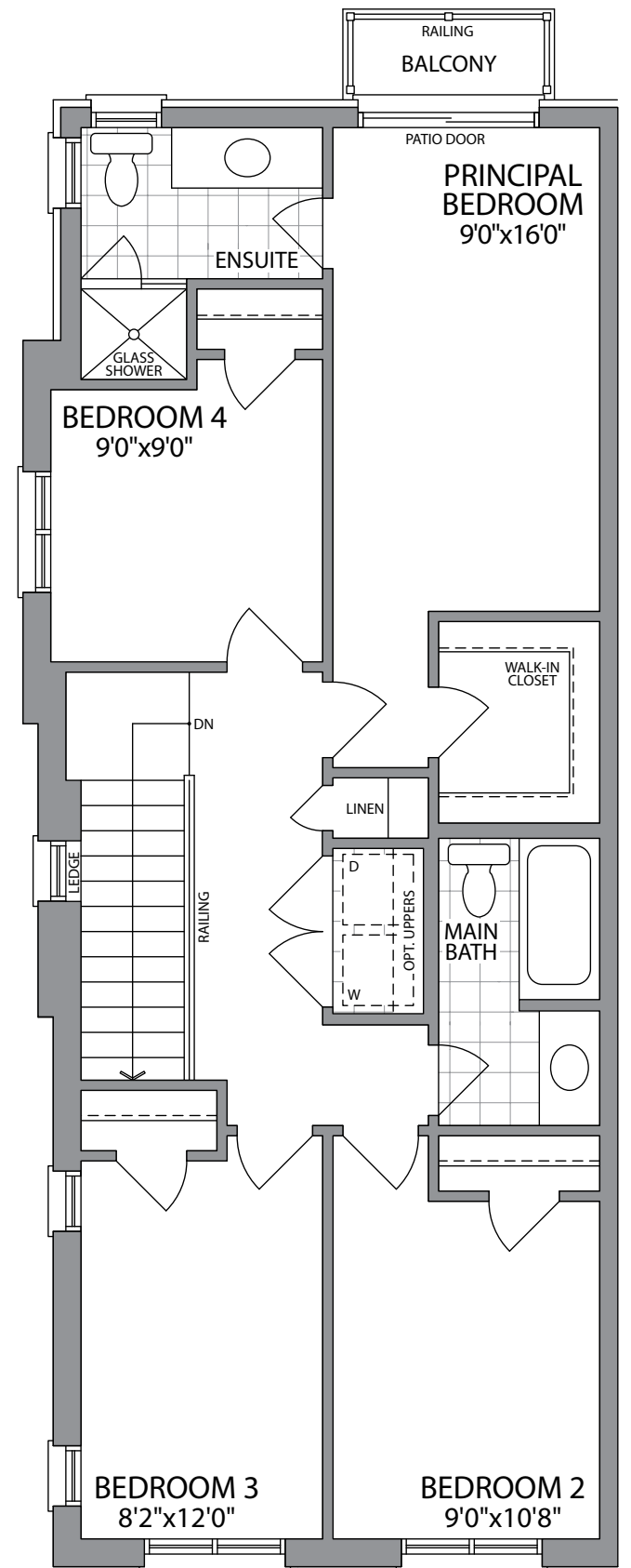
**PARADISE**  
DEVELOPMENTS®



GROUND FLOOR  
ELEVATION 1C

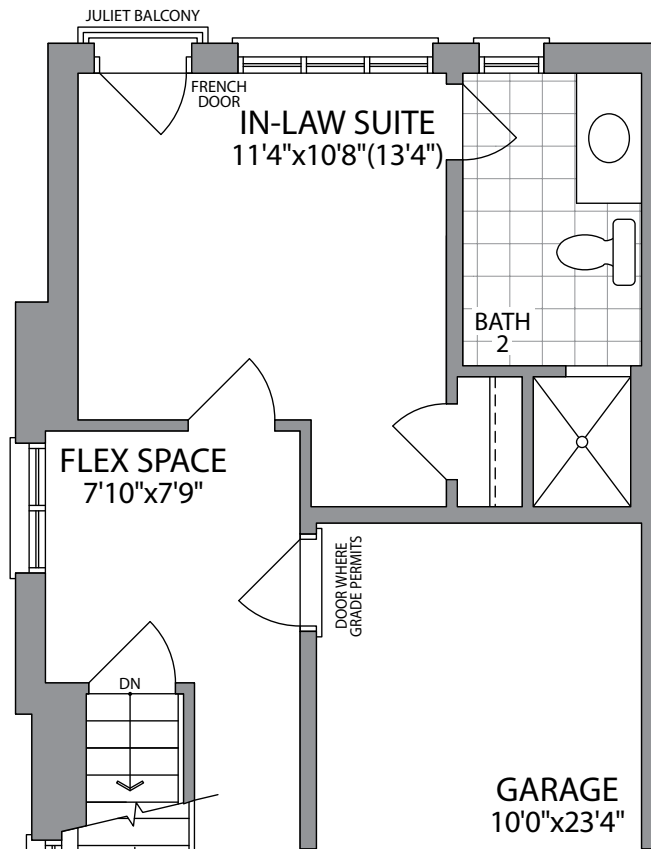


MAIN FLOOR  
ELEVATION 1C

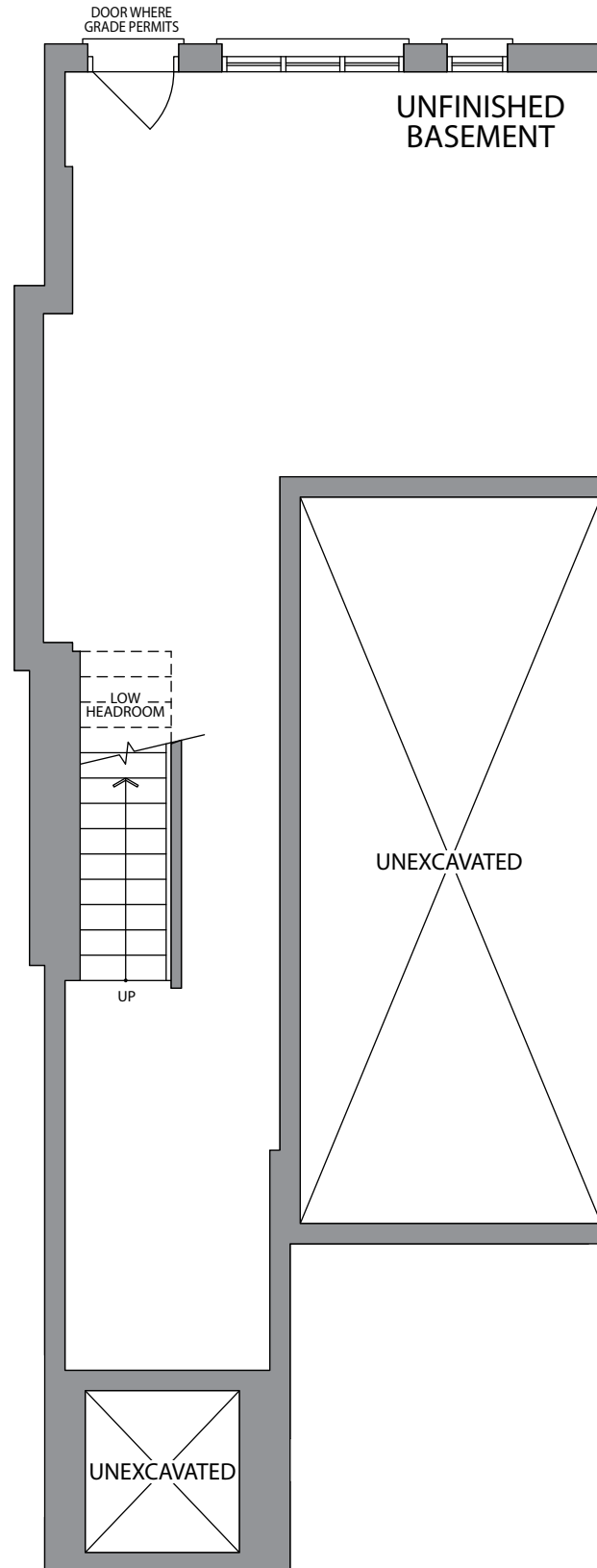


THIRD FLOOR  
ELEVATION 1C

# 2390 SQ.FT. UNIT 13



OPT. GROUND FLOOR  
W/IN-LAW SUITE  
ELEVATION 1C



BASEMENT  
ELEVATION 1C



COME HOME  
TO PARADISE.  
EVERYDAY.

We never forget that your home is the single most precious investment of your life. Each day we go to work inspired with a purpose to fulfill that commitment to you.

Since 1972, we have spent over 5 decades building homes and communities and have remained committed to our roots. Over 15,000 exquisitely built homes stand testimony to our passion and caring. These homes are filled with timeless design, thoughtful planning and unparalleled craftsmanship which anchors them with loving memories, heartwarming stories and unforgettable experiences.

Before we put nail to wood and pen to paper, extensive research, planning and knowhow goes into building every one of our homes and communities. While building homes, we do not overlook the big picture. Our master plan for each community carefully takes into account the location, a harmonious streetscape, and access to amenities, in addition to the nature and open space of the neighbourhood. Collaborating with topnotch architects, planners, designers and tradespeople, we meticulously put together every home with the dreams and aspirations of our homebuyers as our guide. Homebuilding gives us a profound sense of fulfillment as we strive every day to provide better environments, contribute to better schools, and support the communities with a sense of social consciousness – all with a level of integrity, respect and compassion for the world which we live in.

We are Paradise Developments.™

**PARADISE**  
DEVELOPMENTS®

ParadiseDevelopments.com

**PARADISE**  
DEVELOPMENTS®