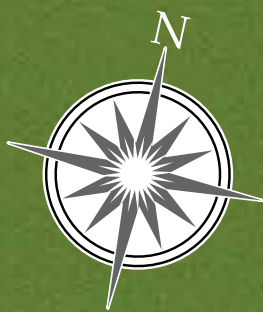
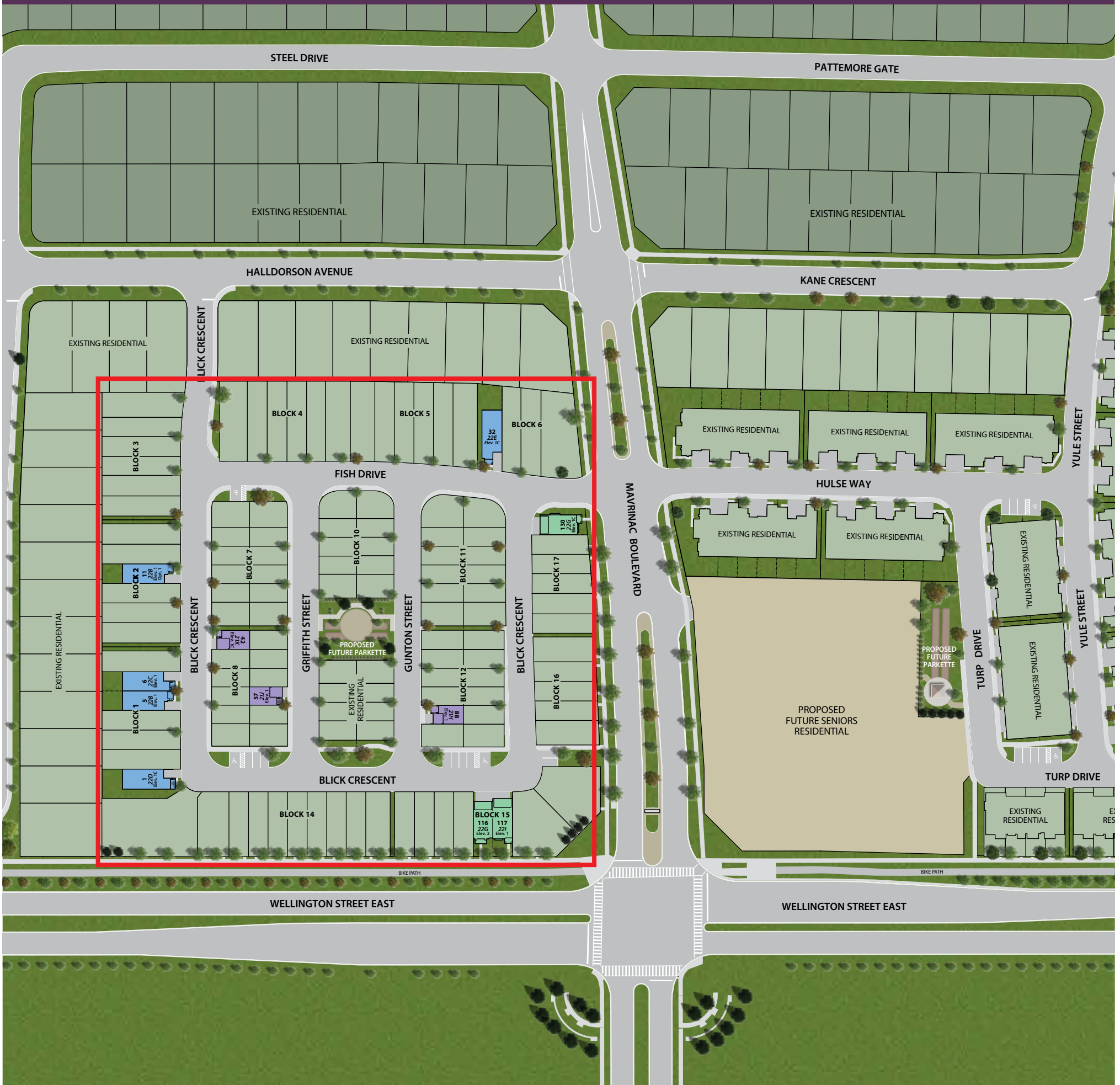


COMMUNITY SITE PLAN



LEGEND

- DESIGNER FINISHED MOVE-IN READY COLLECTION - 2024/2025 CLOSINGS**
- 21' URBAN TOWNS
- 22' TRADITIONAL TOWNS
- 22' DOUBLE CAR GARAGE LANEWAY TOWNS
- EXISTING RESIDENTIAL

AURORA

The location map shows the project site (marked with a red dot) situated at the intersection of Wellington St. E. and Mavrinc Blvd. Other nearby streets include St. John's Side Rd., Yonge St., Bayview Ave., Stronach Blvd., Leslie St., and Bloomington Rd. Highway 404 is also shown. A north arrow is included.