

WHITBY MEADOWS

new**TOWNS**

**STREET
TOWNS**



JB

A close-up photograph of a man and a woman smiling and embracing each other. The man is in the foreground, wearing a dark blue sweater, and the woman is behind him, wearing an orange top. They are both laughing and looking towards the right. The background is dark and out of focus.

PARADISE **COMES** **TO WHITBY.**

Life is all about choices. Of all the things we choose in life, purchasing a new home is perhaps the single most important decision we'll ever make. That's why you'll appreciate the wide variety of homes that Paradise Developments is offering here at Whitby Meadows New Towns. As we add this collection of beautiful new townhomes to our proud legacy, we aim to create something larger - a thoughtfully planned community that you'll be proud to call home.

WHITBY MEADOWS
newTOWNS



THE
BURROWS (TH2)

THE
ANTARES (TH1)

THE
ANTARES (TH1)

THE
ANTARES (TH1)



S (TH1)

THE
ANTARES (TH1)

THE
ANTARES (TH1)

THE
CESSNA (TH3)

Artist's Concept

ELEVATION 1

PARADISE
DEVELOPMENTS®



THE
BURROWS (TH2)



THE
ANTARES (TH1)



THE
ANTARES (TH1)



THE
ANTARES(TH1)



THE
ANTARES(TH1)



THE
BURROWS(TH2)

Artist's Concept

ELEVATION 2

PARADISE
DEVELOPMENTS®

STREET
TOWNS

THE ANTARES-MOD (TH1-MOD)



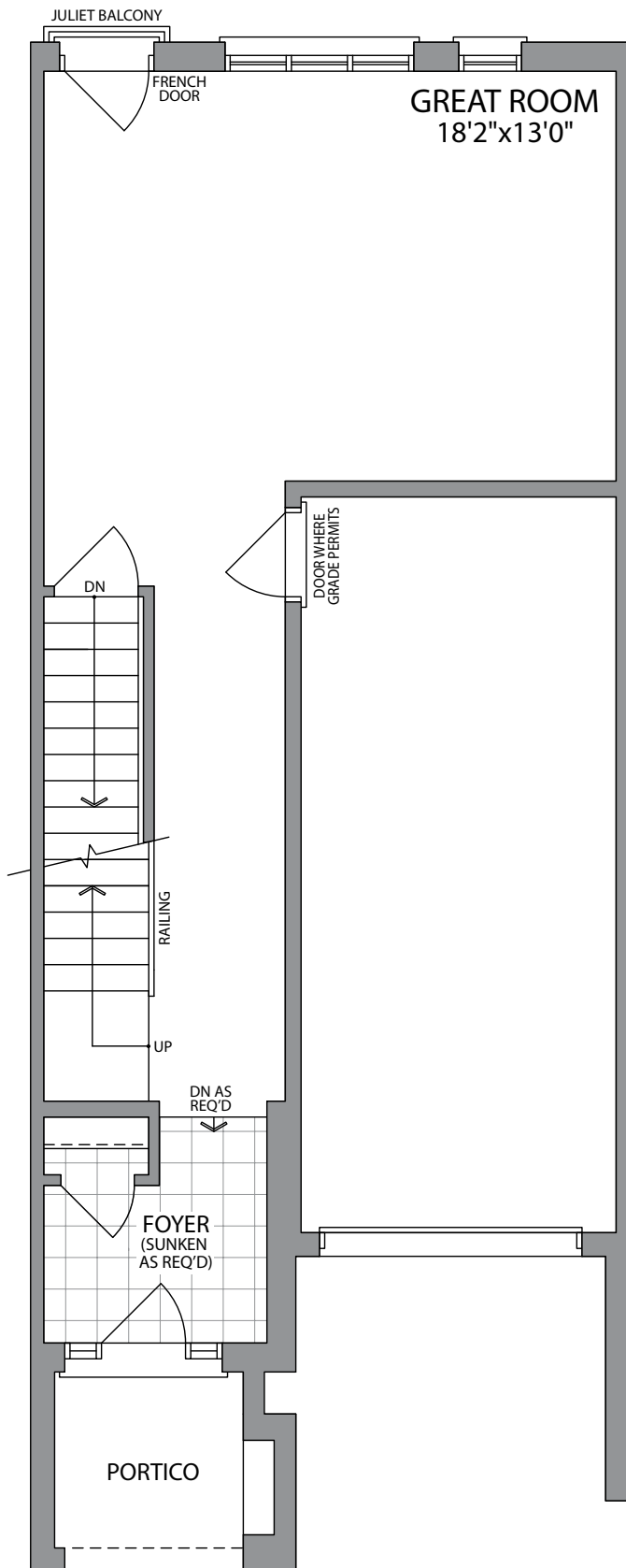
ELEVATION 1
2300 SQ.FT.
UNIT 12

WHITBY MEADOWS
newTOWNS

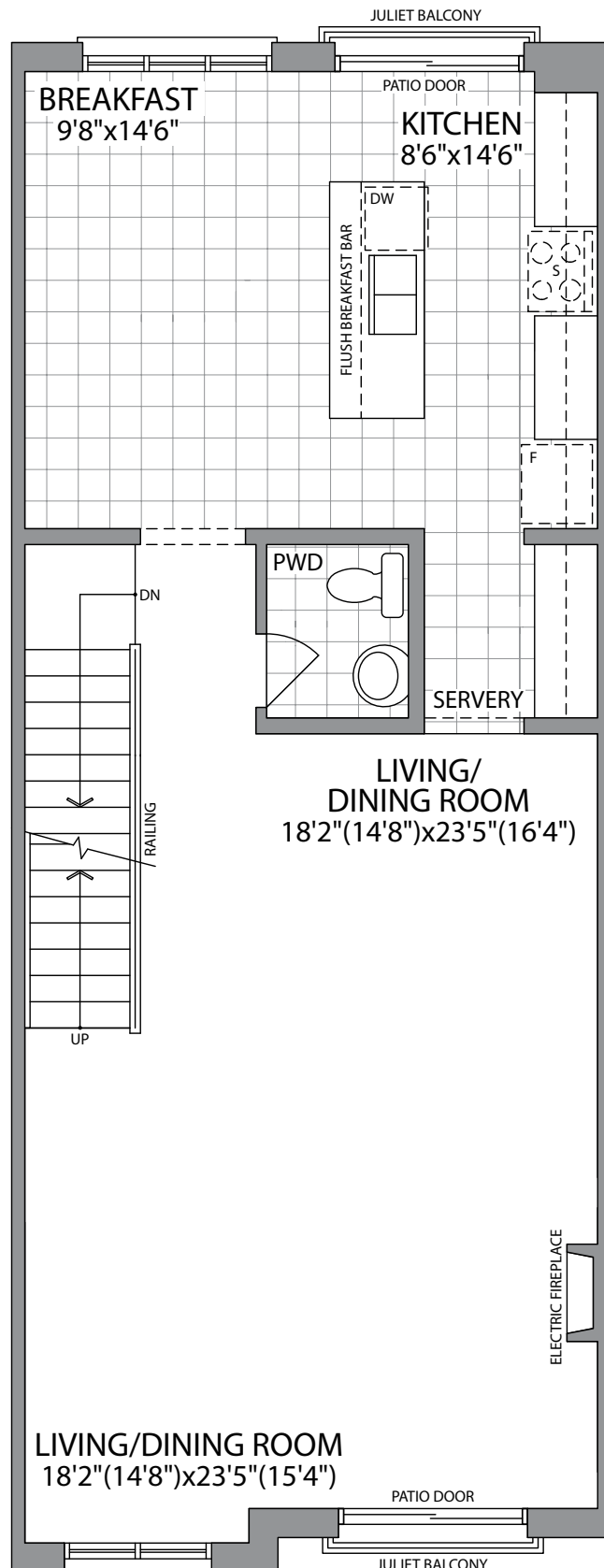


Artist's Concept

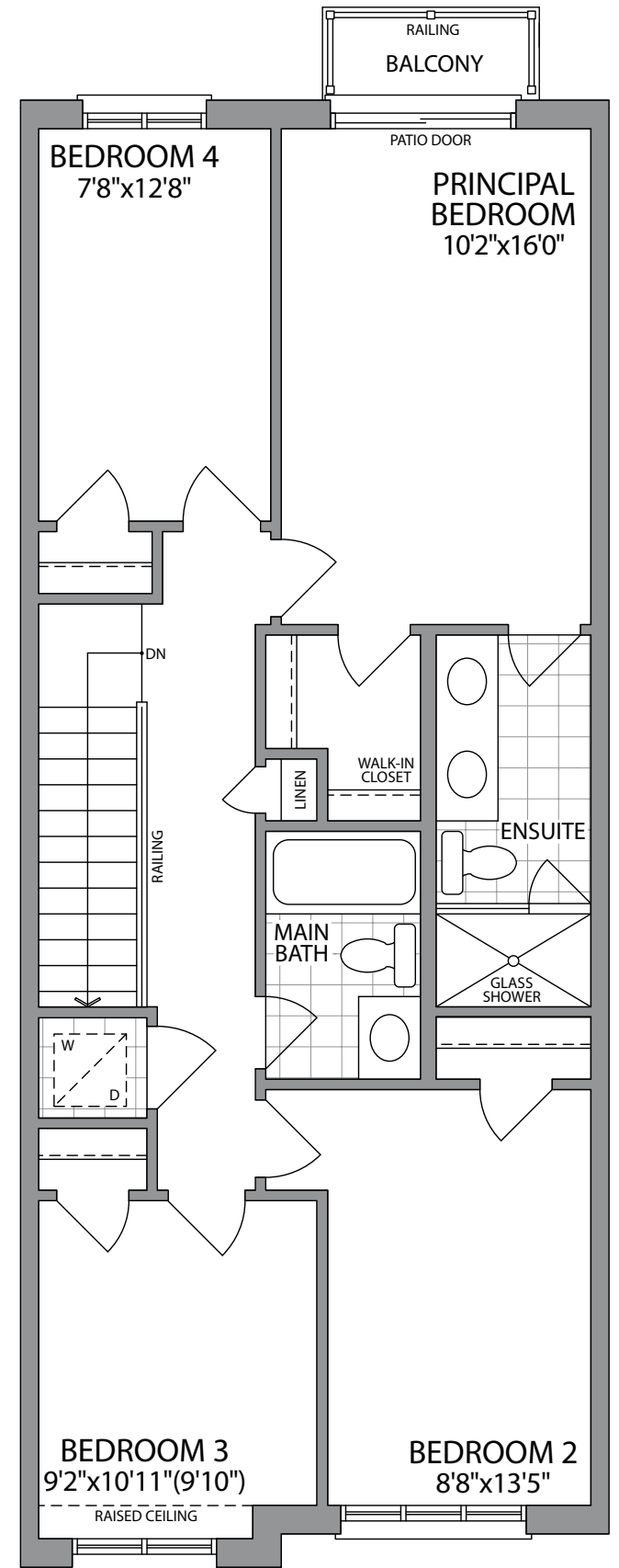
PARADISE
DEVELOPMENTS®



GROUND FLOOR
ELEVATION 1

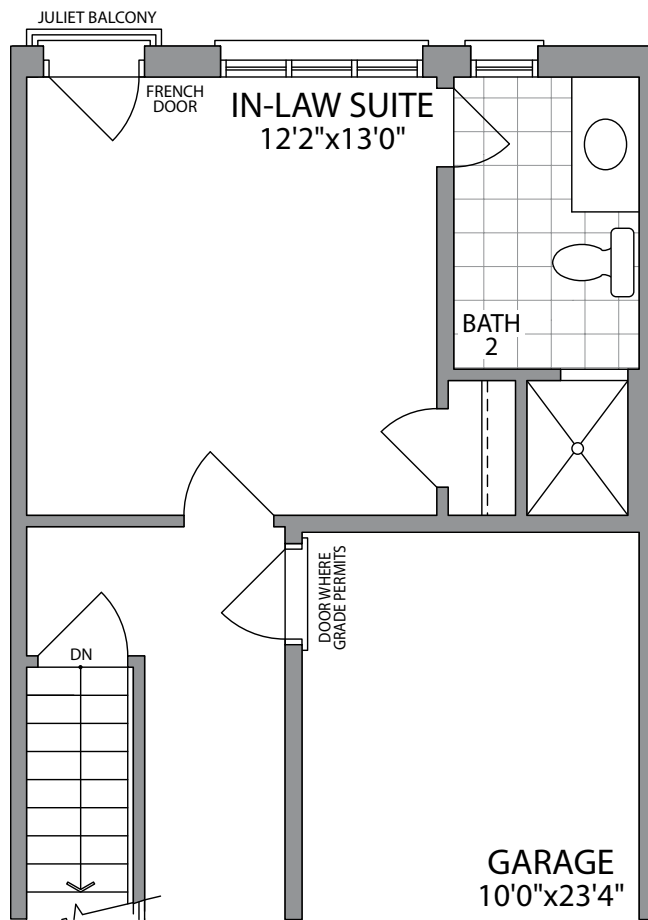


MAIN FLOOR
ELEVATION 1

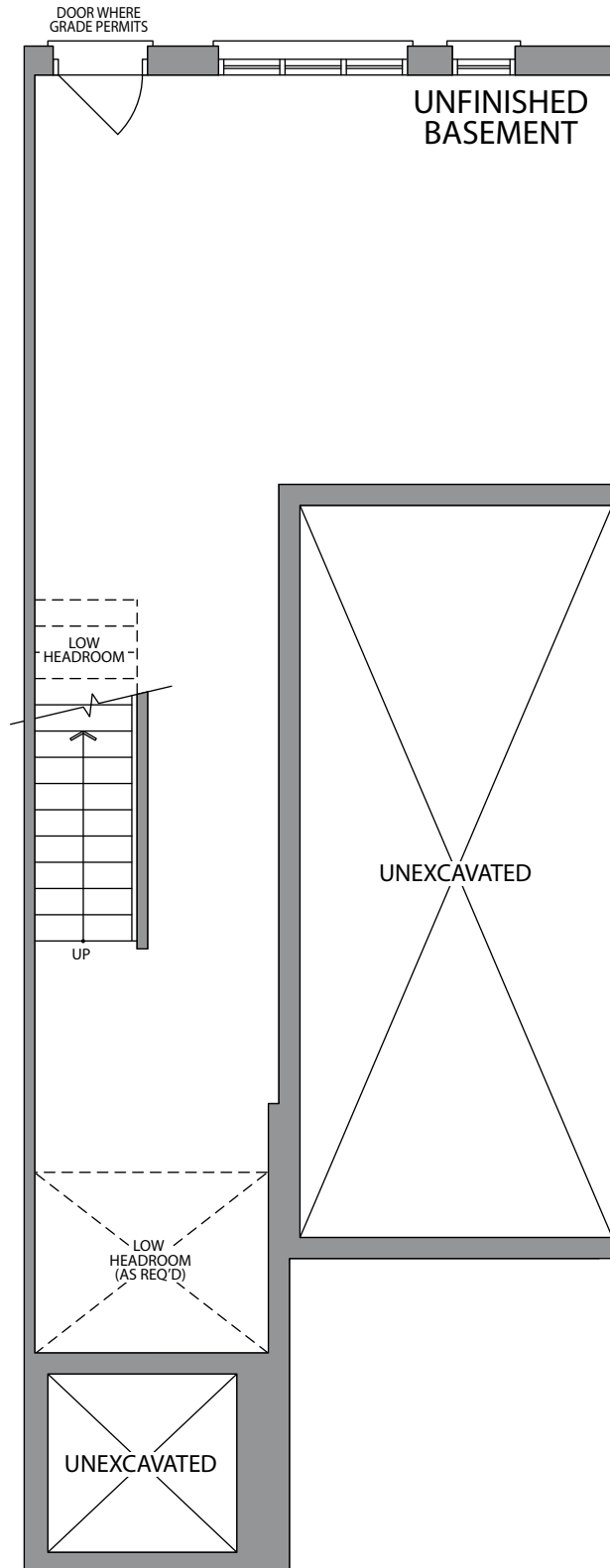


THIRD FLOOR
ELEVATION 1

2300 SQ.FT. UNIT 12



OPT. GROUND FLOOR
W/IN-LAW SUITE
ELEVATION 1



BASEMENT
ELEVATION 1

STREET
TOWNS

THE ANTARES (TH1)

ELEVATION 1
2310 SQ.FT.



Artist's Concept

ELEVATION 2
2310 SQ.FT.

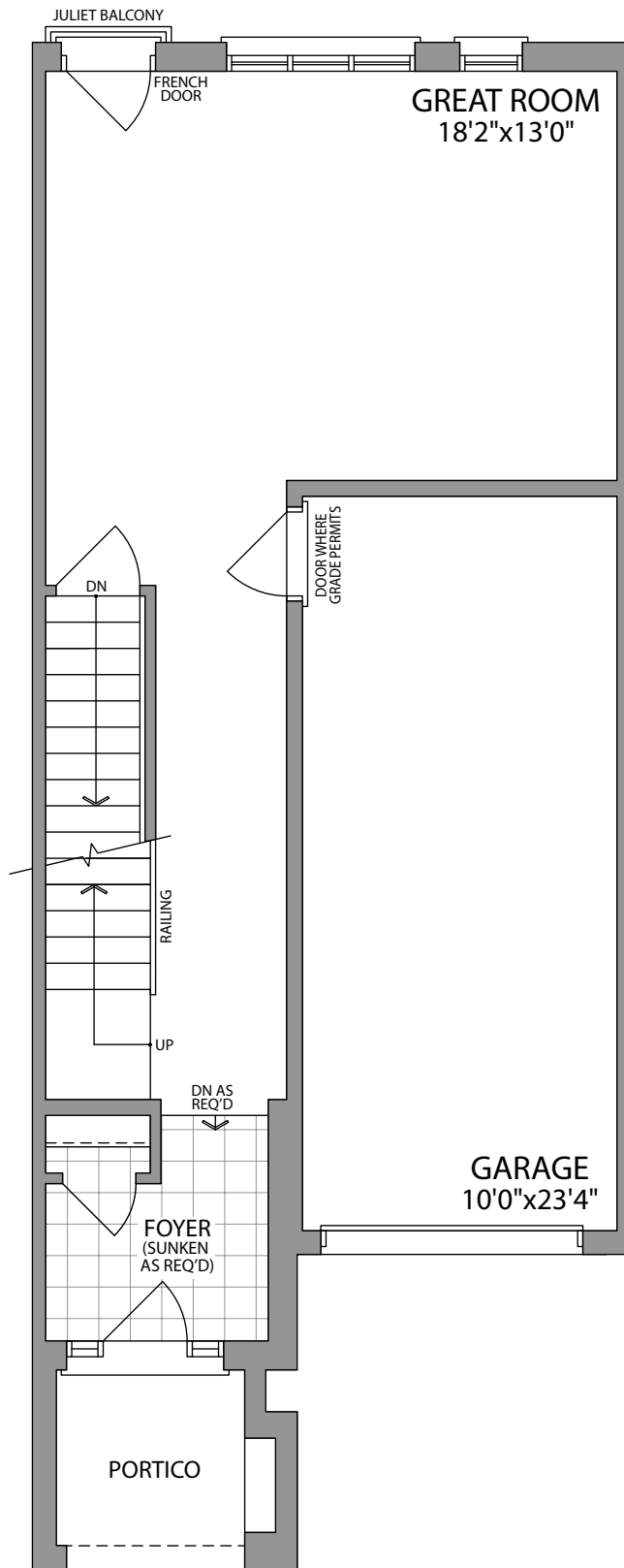
WHITBY MEADOWS
newTOWns



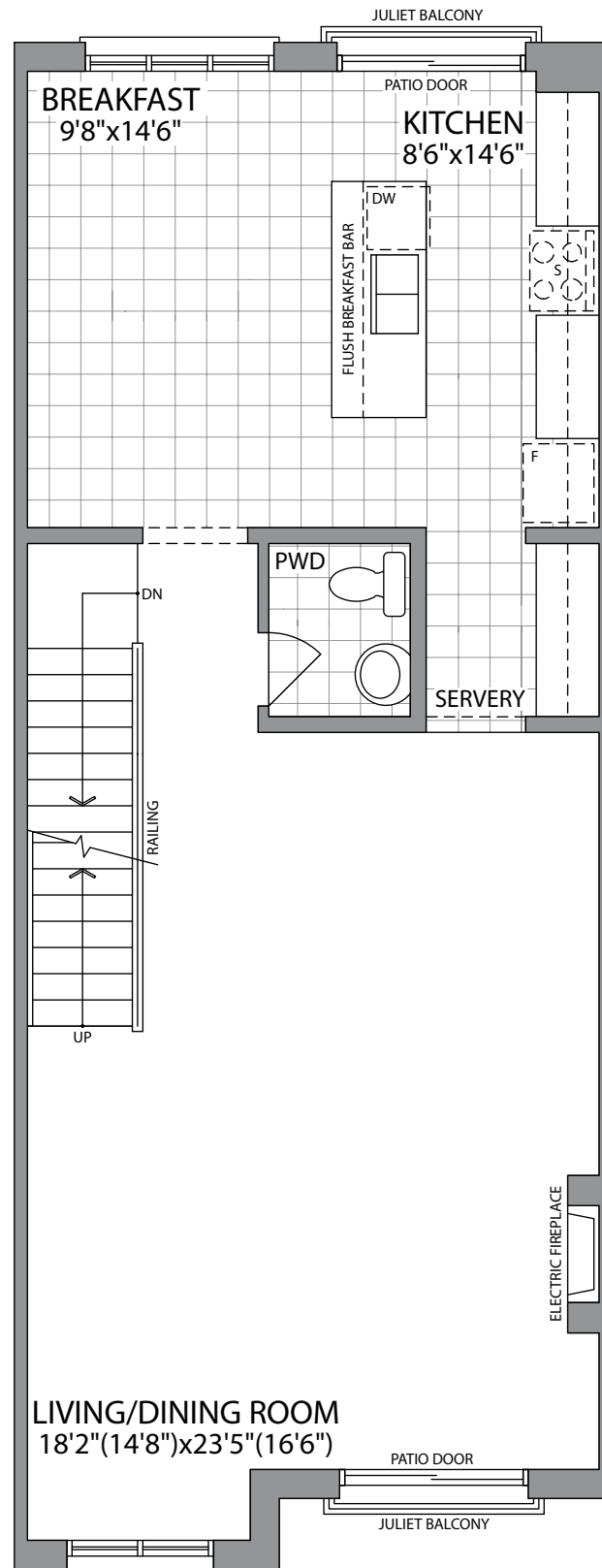
Artist's Concept

PARADISE
DEVELOPMENTS®

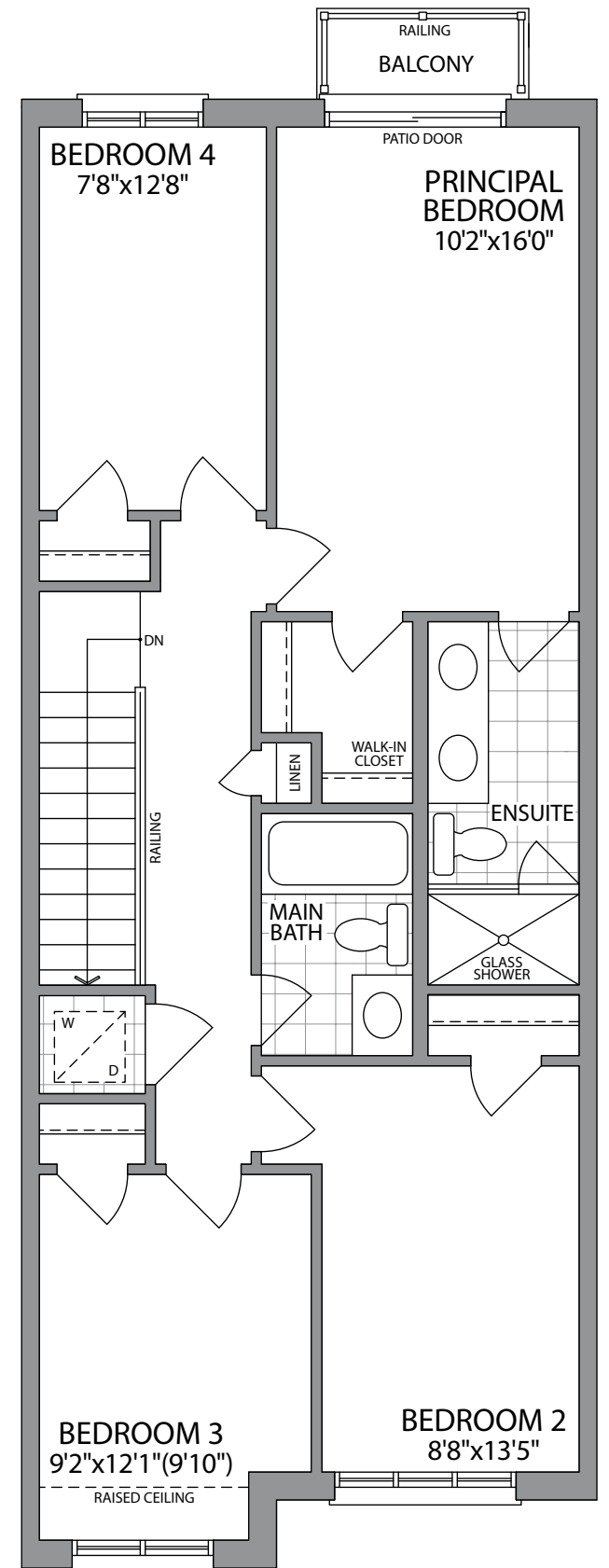
THE ANTARES (TH1)



GROUND FLOOR
ELEVATION 1

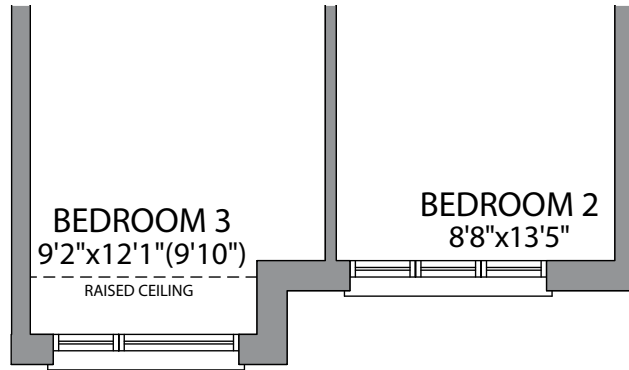


MAIN FLOOR
ELEVATION 1

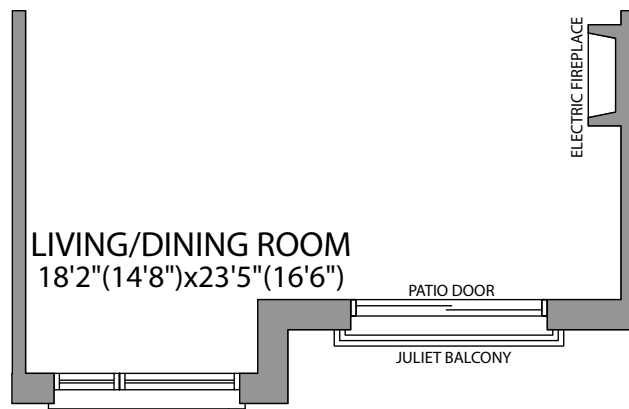


THIRD FLOOR
ELEVATION 1

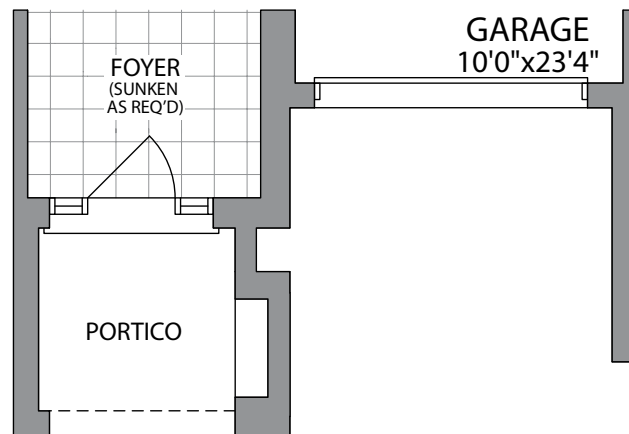
2310 SQ.FT.



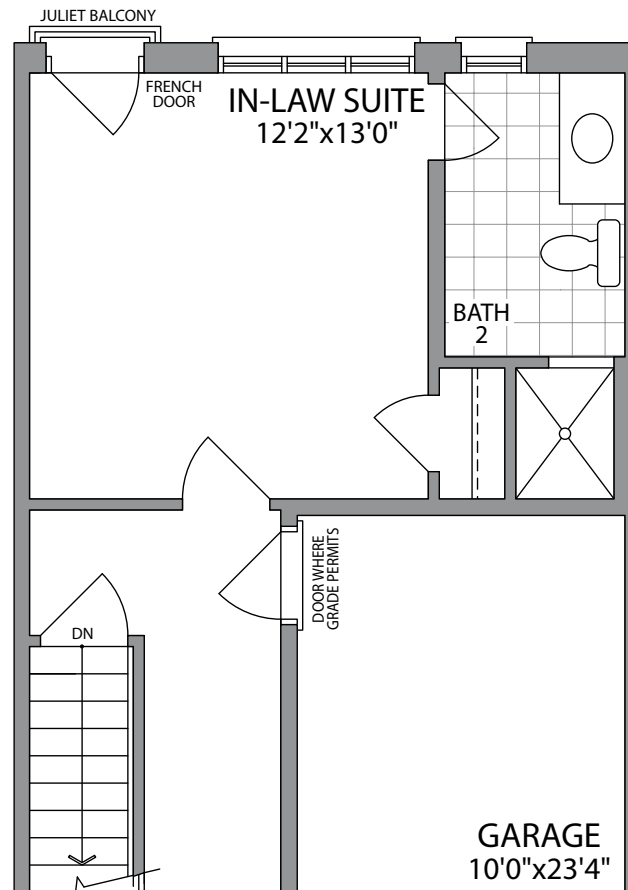
THIRD FLOOR
ELEVATION 2



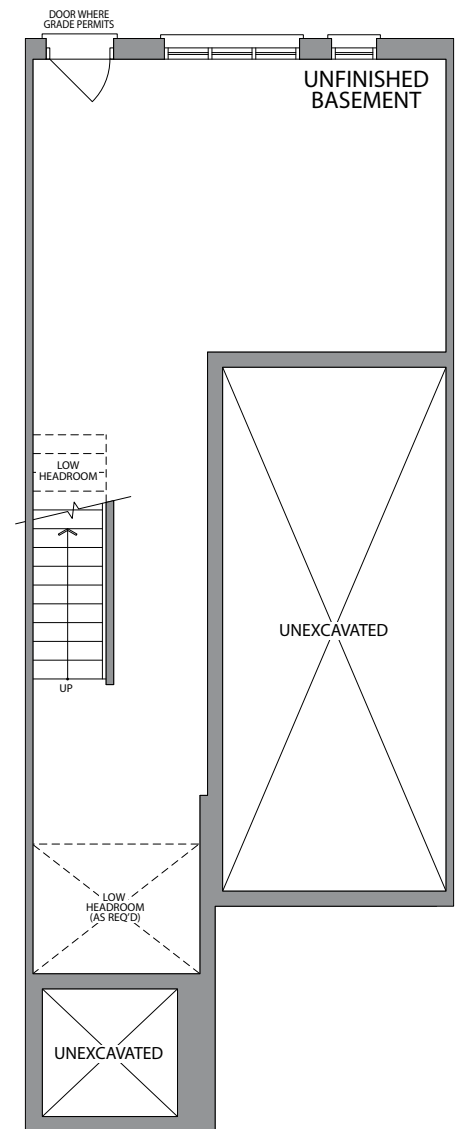
MAIN FLOOR
ELEVATION 2



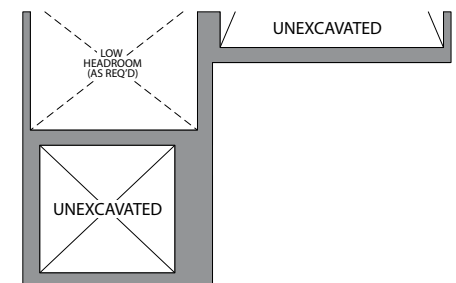
GROUND FLOOR
ELEVATION 2



OPT. GROUND FLOOR
W/IN-LAW SUITE
ELEVATION 1 & 2



BASEMENT
ELEVATION 1



BASEMENT
ELEVATION 2

STREET
TOWNS

THE BURROWS-MOD (TH2-MOD)



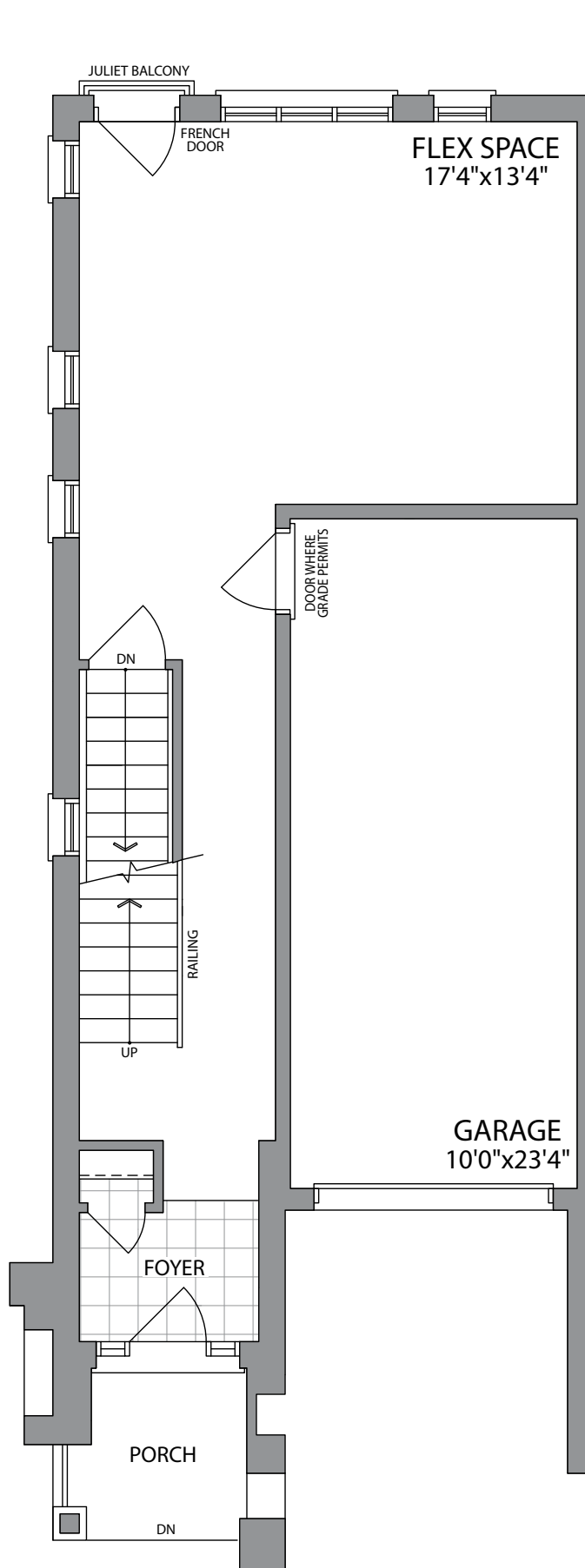
ELEVATION 2C
2300 SQ.FT.
UNIT 1

WHITBY MEADOWS
newTOWNS

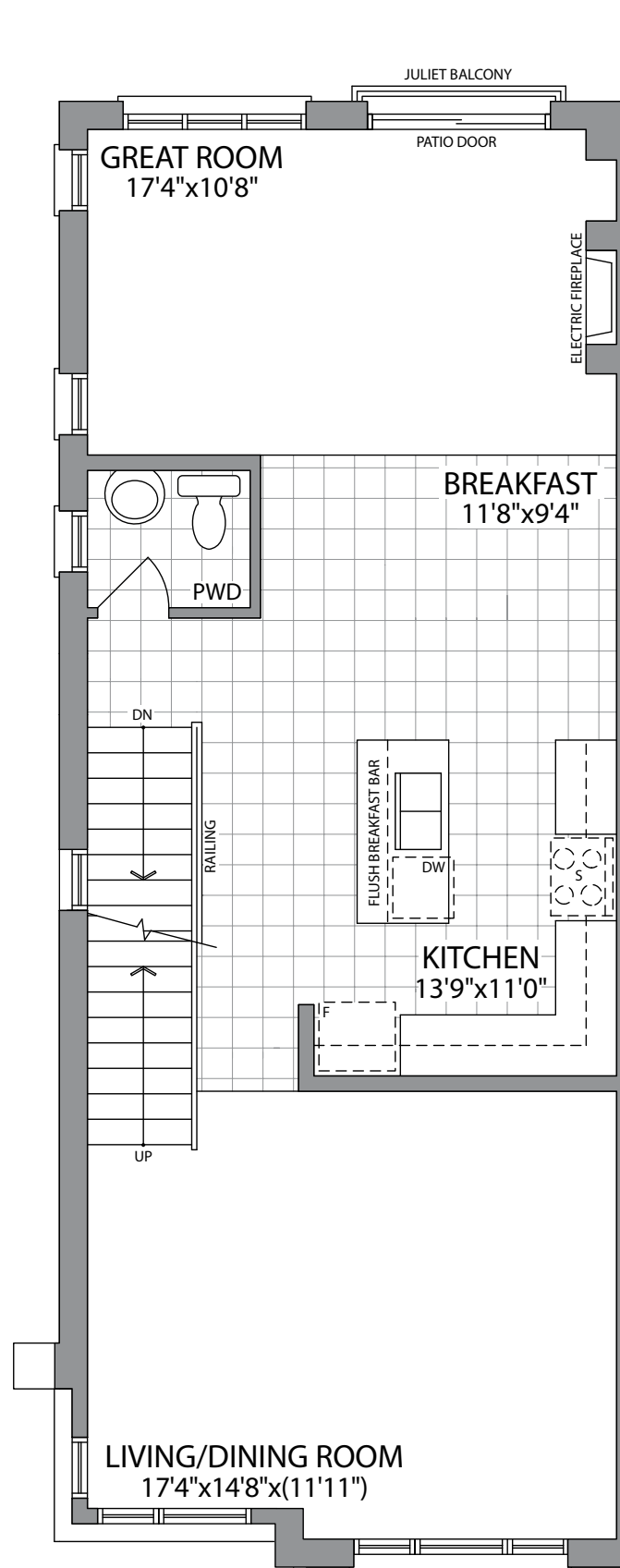


Artist's Concept

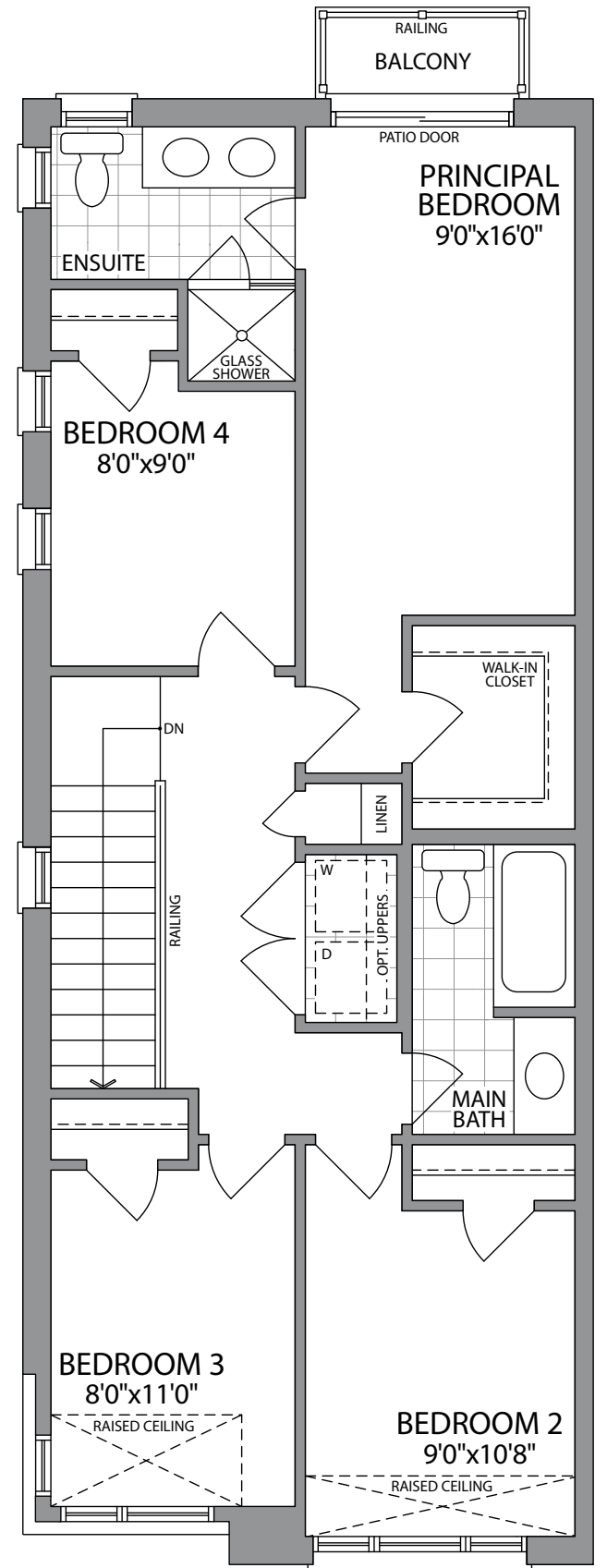
PARADISE
DEVELOPMENTS®



GROUND FLOOR
ELEVATION 2C

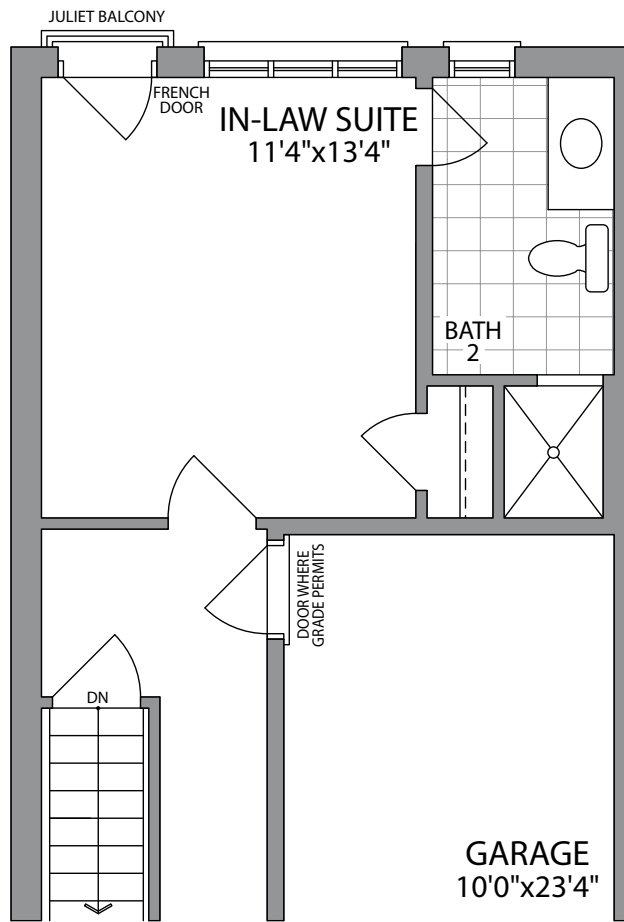


MAIN FLOOR
ELEVATION 2C

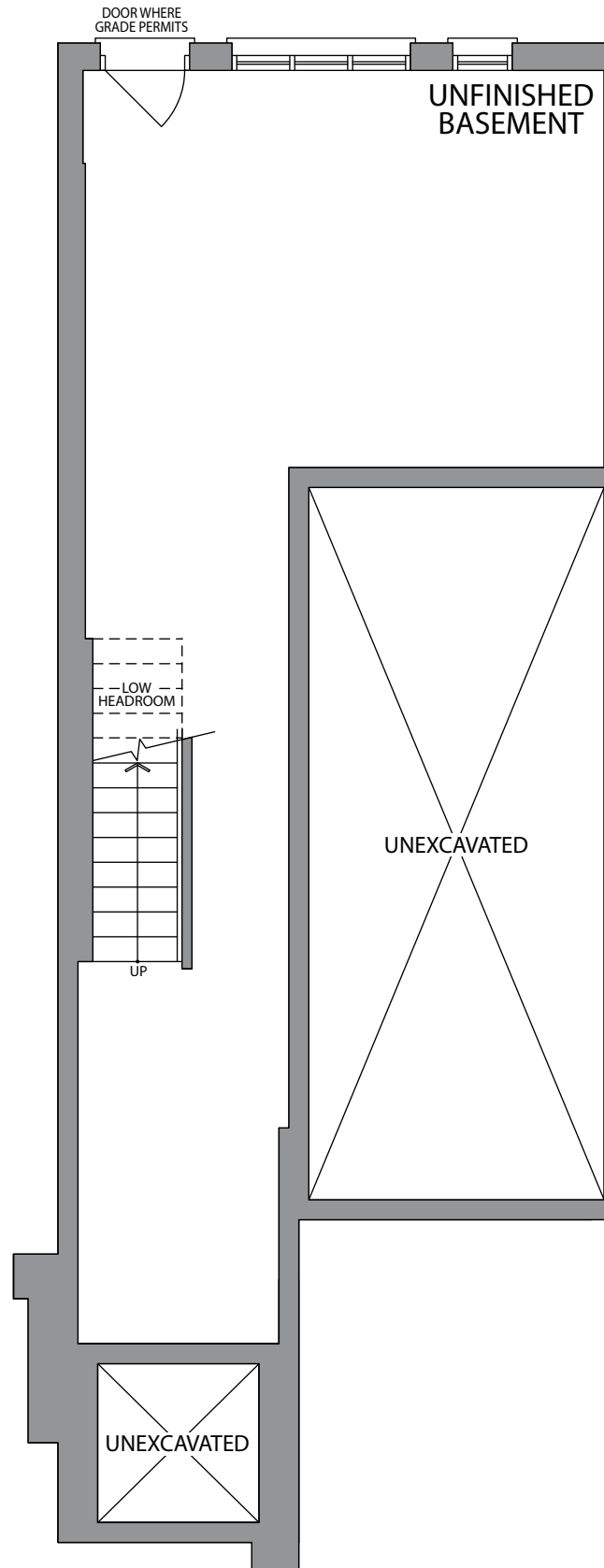


THIRD FLOOR
ELEVATION 2C

2300 SQ.FT. UNIT 1



OPT. GROUND FLOOR
W/IN-LAW SUITE
ELEVATION 2C



BASEMENT
ELEVATION 2C

STREET
TOWNS

THE BURROWS (TH2)

ELEVATION 1C
2315 SQ.FT.



Artist's Concept

ELEVATION 2C
2315 SQ.FT.

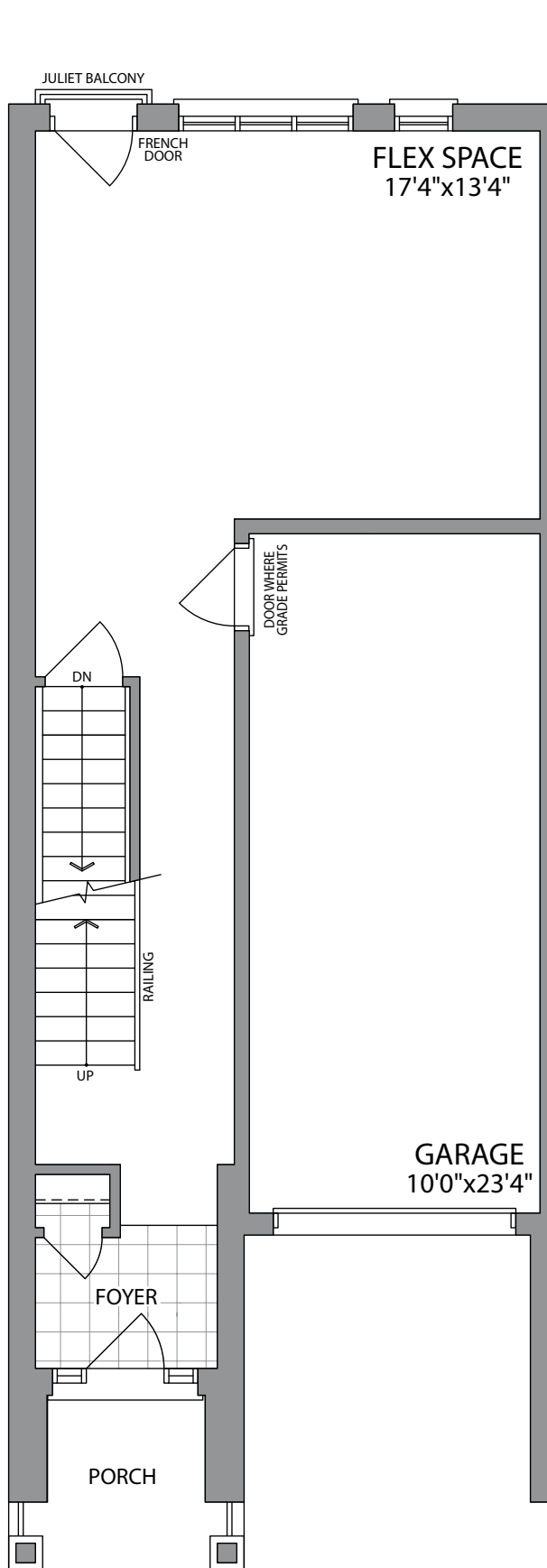
WHITBY MEADOWS
newTOWNS



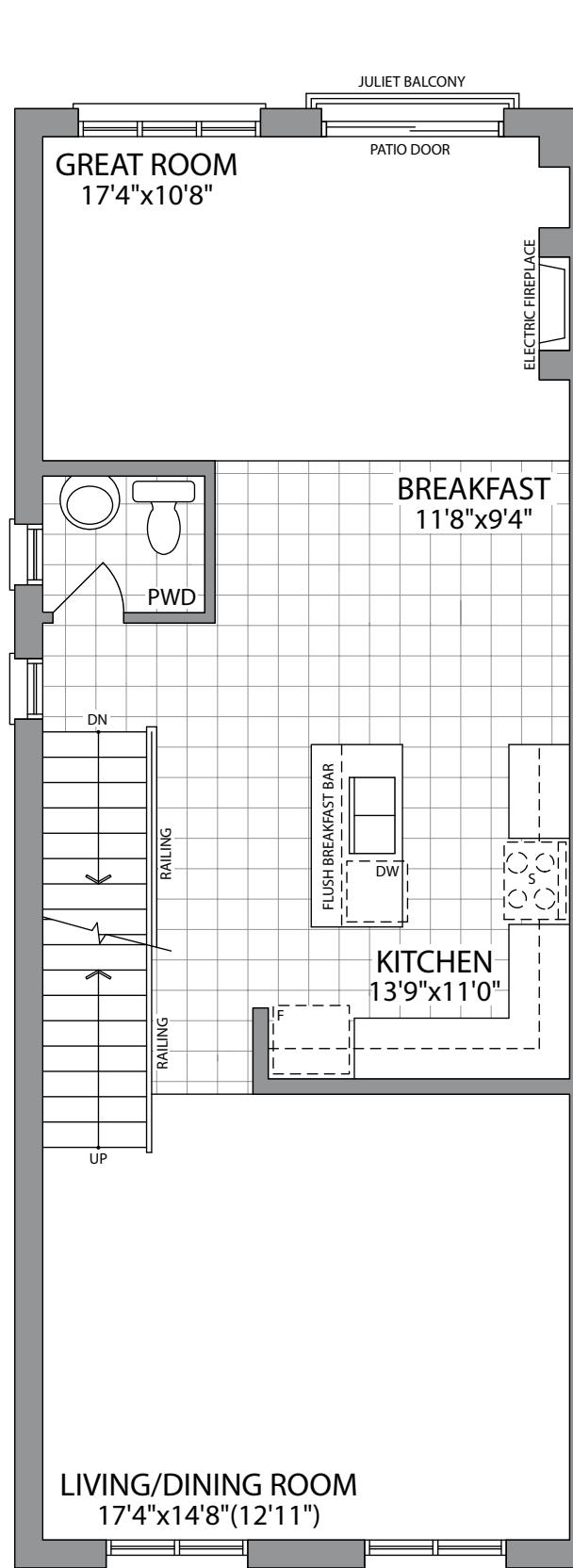
Artist's Concept

PARADISE
DEVELOPMENTS®

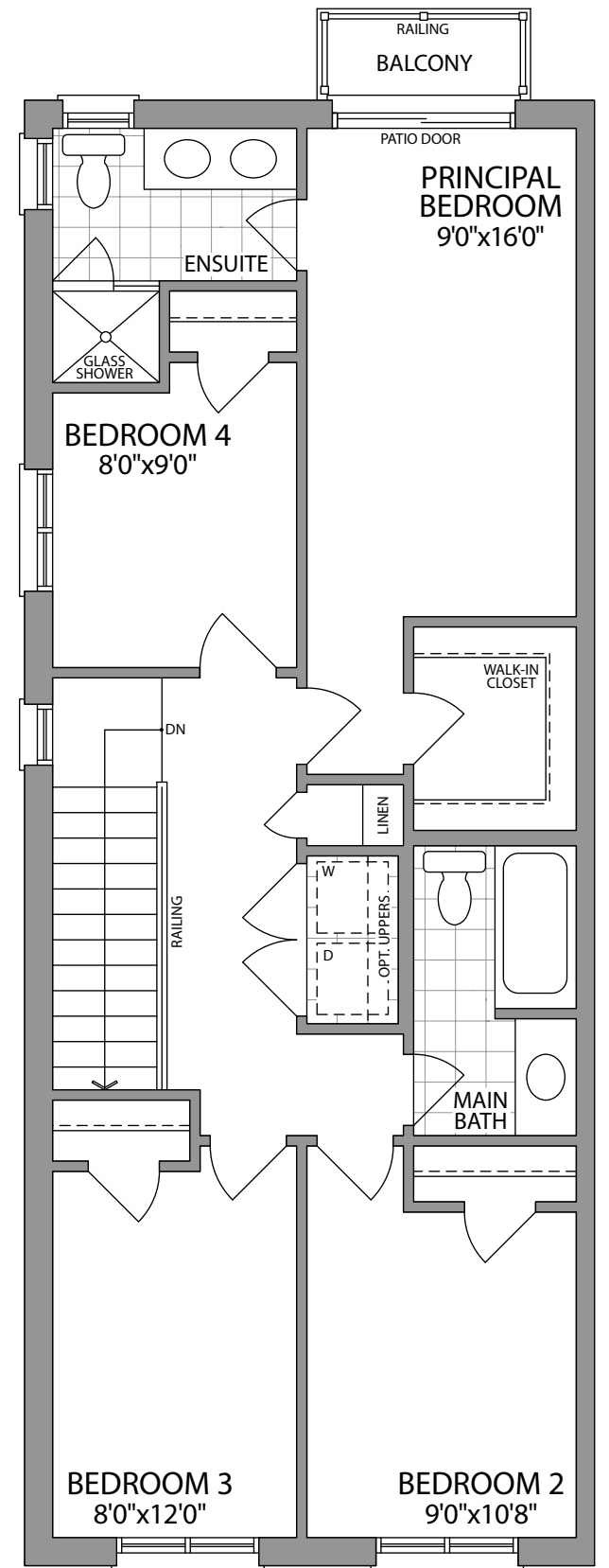
THE BURROWS (TH2)



GROUND FLOOR
ELEVATION 1C

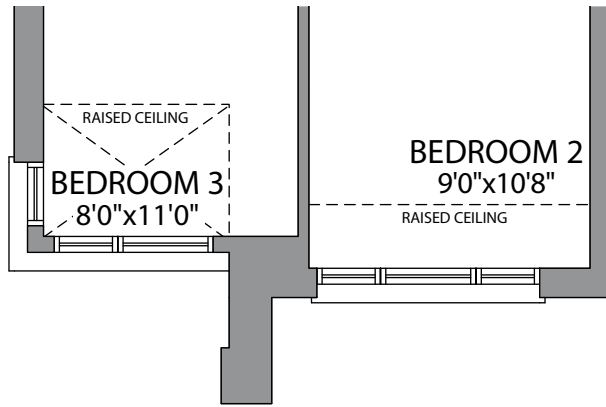


MAIN FLOOR
ELEVATION 1C

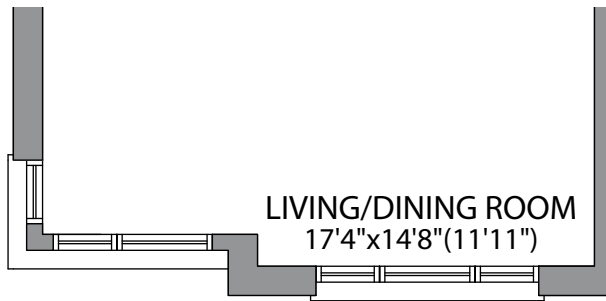


THIRD FLOOR
ELEVATION 1C

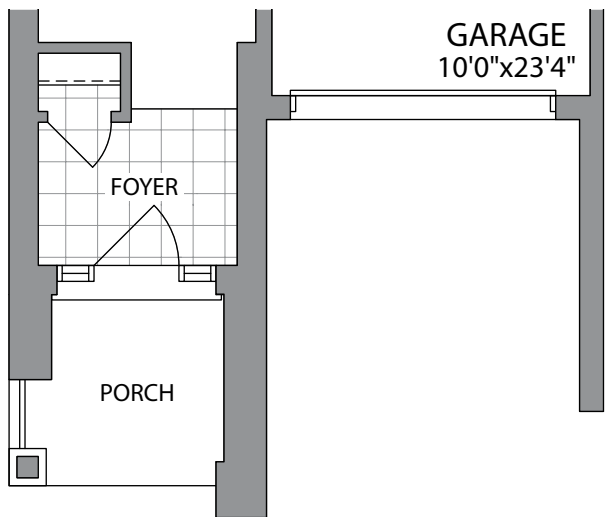
2315 SQ.FT.



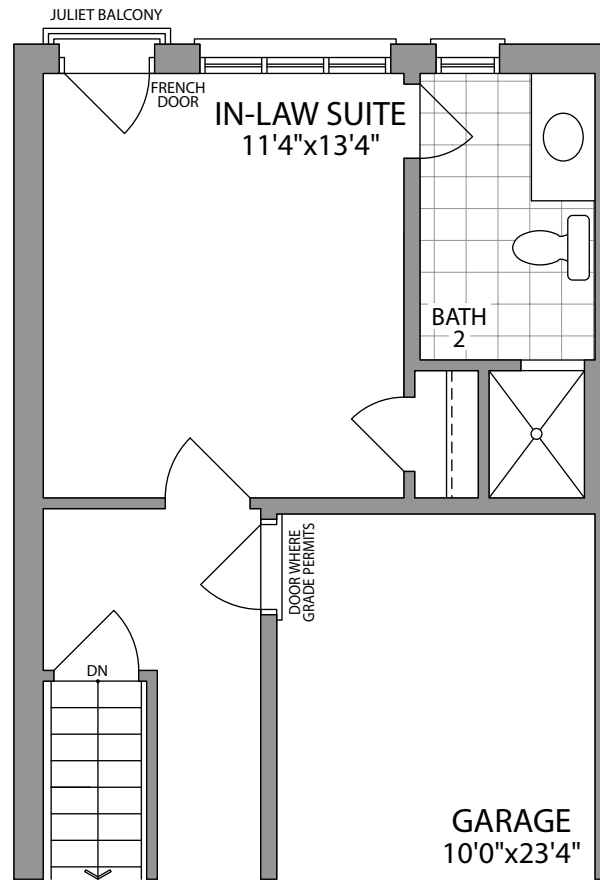
THIRD FLOOR
ELEVATION 2C



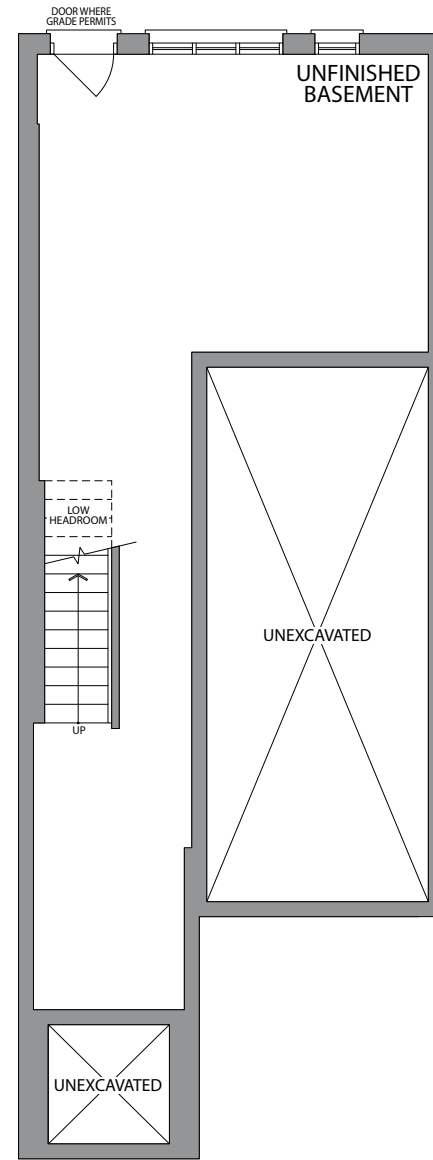
MAIN FLOOR
ELEVATION 2C



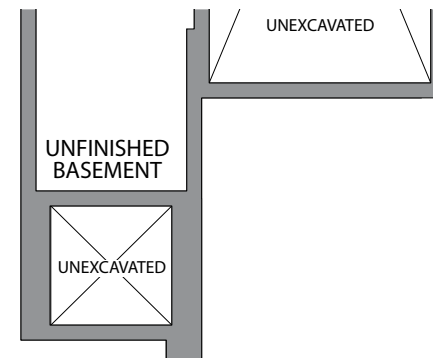
GROUND FLOOR
ELEVATION 2C



OPT. GROUND FLOOR
W/IN-LAW SUITE
ELEVATION 1C & 2C



BASEMENT
ELEVATION 1C



BASEMENT
ELEVATION 2C

STREET
TOWNS

THE CESSNA (TH3)



ELEVATION 1C
2390 SQ.FT.
UNIT 13

WHITBY MEADOWS
newTOWns



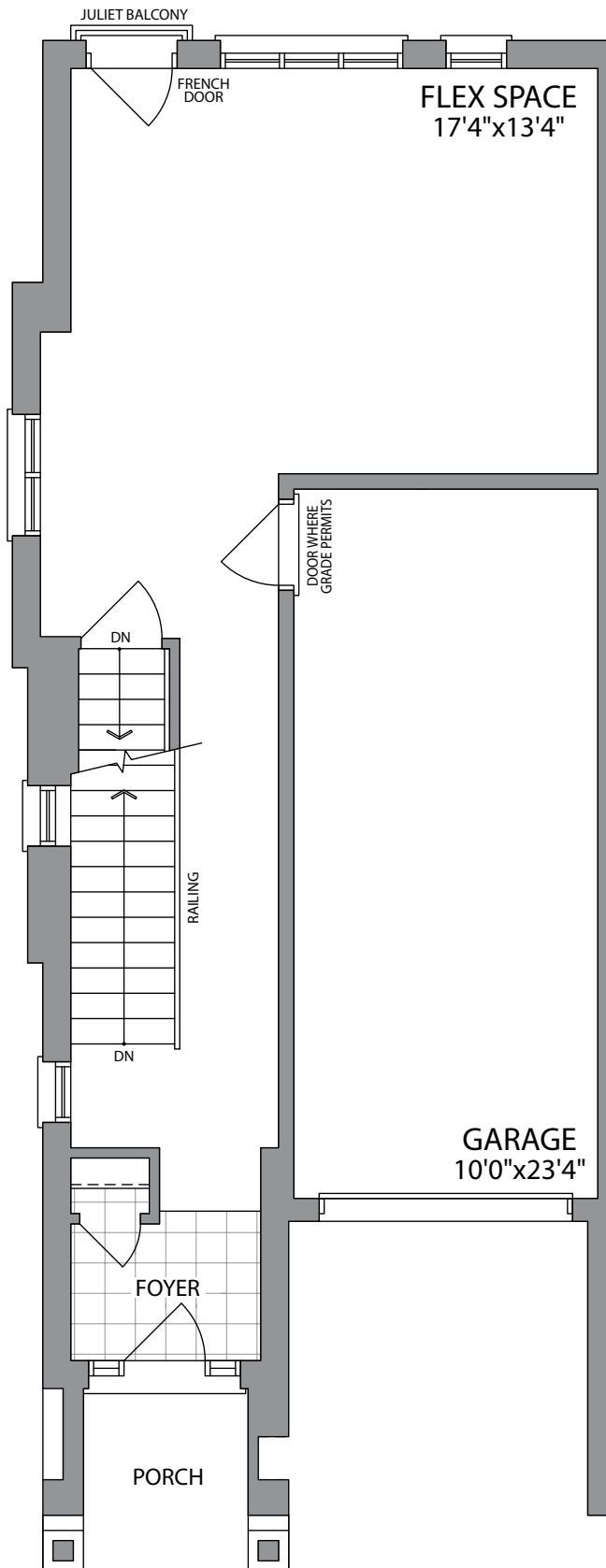
Artist's Concept

PARADISE
DEVELOPMENTS®

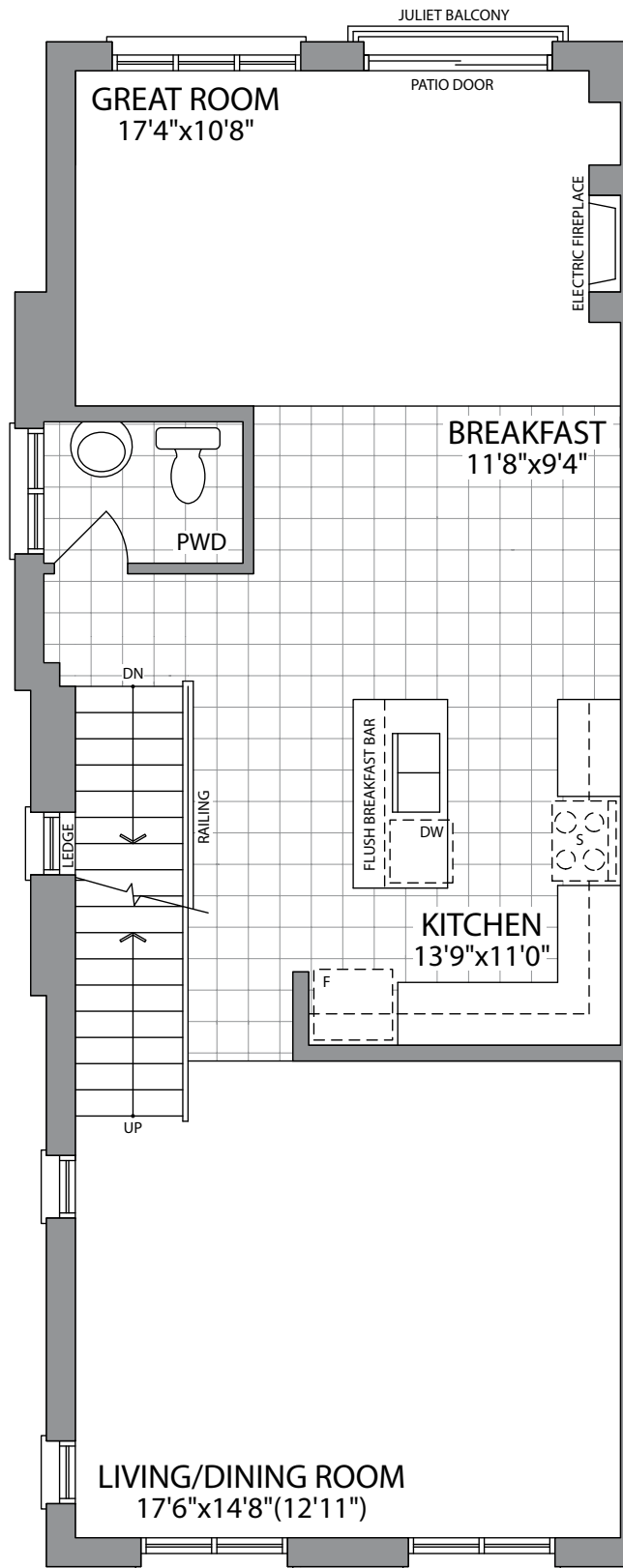
STREET TOWNS

ELEVATION 1C

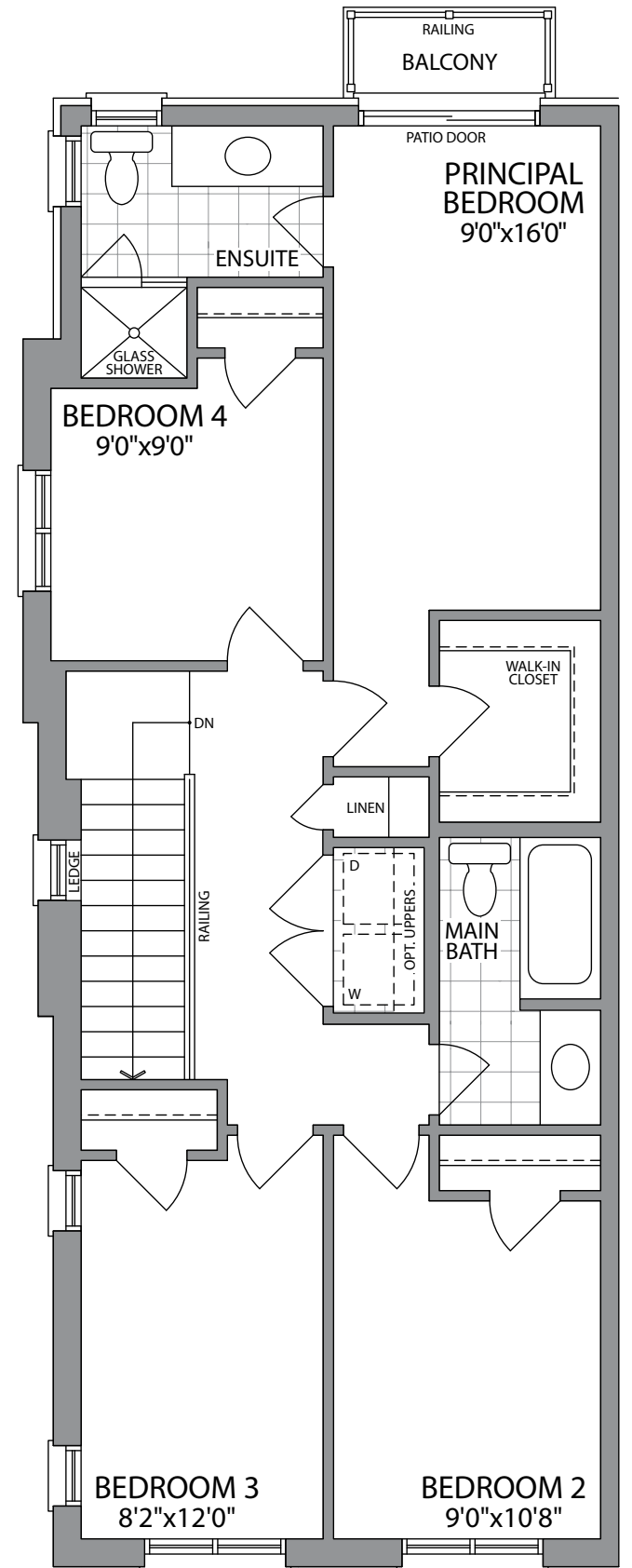
THE CESSNA (TH3)



GROUND FLOOR
ELEVATION 1C

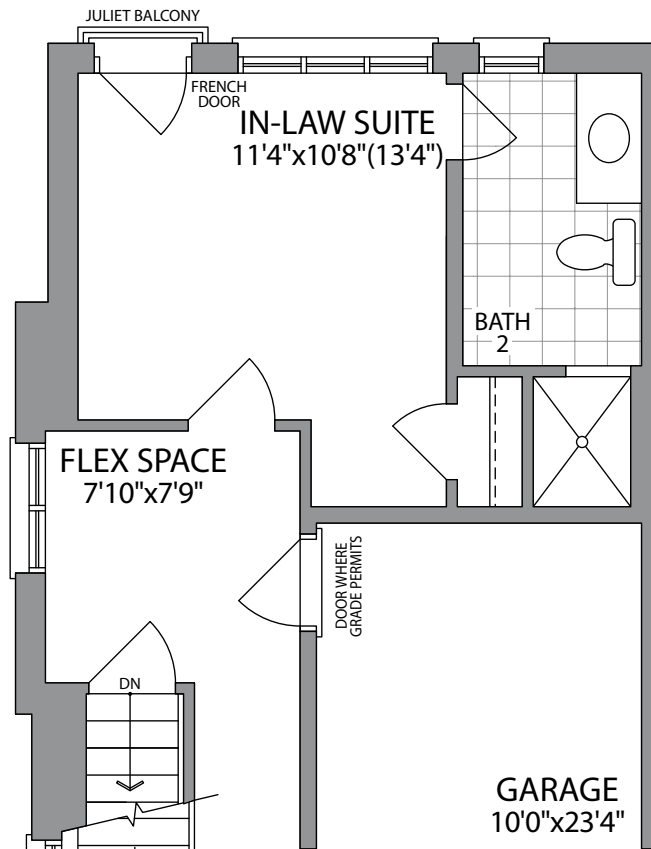


MAIN FLOOR
ELEVATION 1C

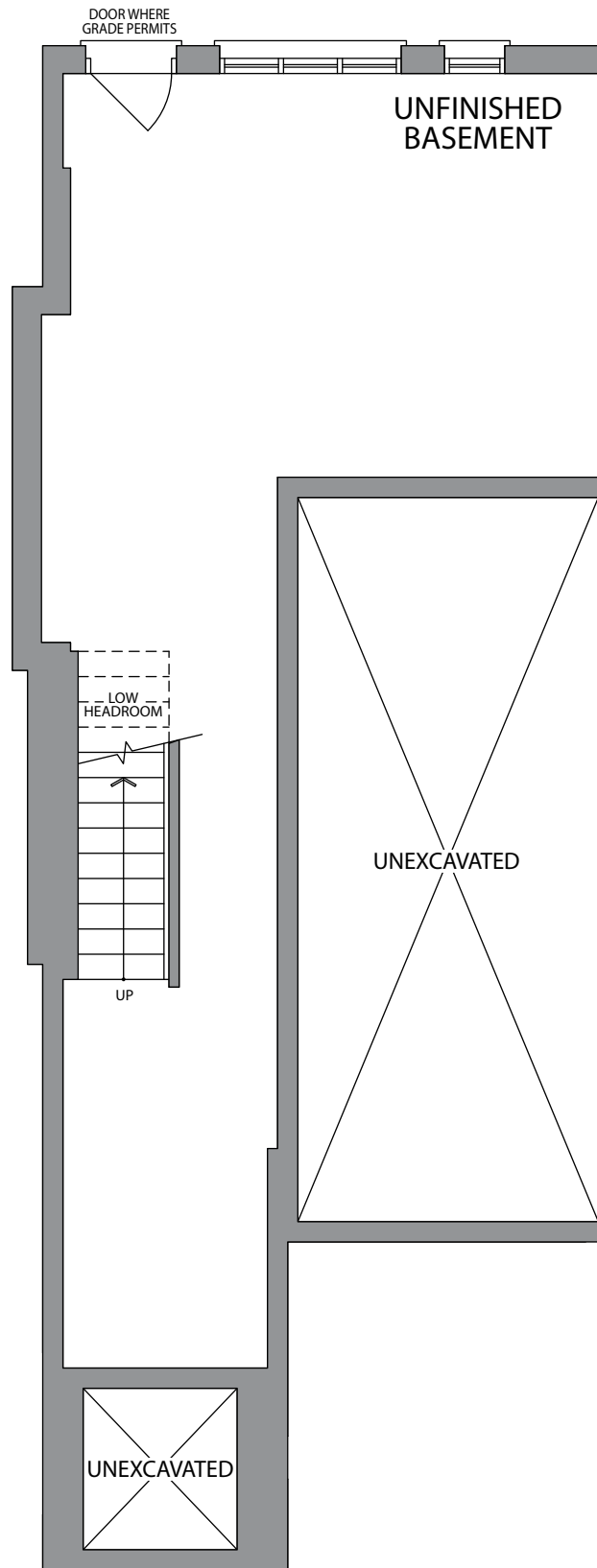


THIRD FLOOR
ELEVATION 1C

2390 SQ.FT. UNIT 13



OPT. GROUND FLOOR
W/IN-LAW SUITE
ELEVATION 1C



BASEMENT
ELEVATION 1C



COME HOME
TO PARADISE.
EVERYDAY.

We never forget that your home is the single most precious investment of your life. Each day we go to work inspired with a purpose to fulfill that commitment to you.

Since 1972, we have spent over 5 decades building homes and communities and have remained committed to our roots. Over 15,000 exquisitely built homes stand testimony to our passion and caring. These homes are filled with timeless design, thoughtful planning and unparalleled craftsmanship which anchors them with loving memories, heartwarming stories and unforgettable experiences.

Before we put nail to wood and pen to paper, extensive research, planning and knowhow goes into building every one of our homes and communities. While building homes, we do not overlook the big picture. Our master plan for each community carefully takes into account the location, a harmonious streetscape, and access to amenities, in addition to the nature and open space of the neighbourhood. Collaborating with topnotch architects, planners, designers and tradespeople, we meticulously put together every home with the dreams and aspirations of our homebuyers as our guide. Homebuilding gives us a profound sense of fulfillment as we strive every day to provide better environments, contribute to better schools, and support the communities with a sense of social consciousness – all with a level of integrity, respect and compassion for the world which we live in.

We are Paradise Developments.™

PARADISE
DEVELOPMENTS®

ParadiseDevelopments.com

PARADISE
DEVELOPMENTS®